

**CIHM
Microfiche
Series
(Monographs)**

**ICMH
Collection de
microfiches
(monographies)**



Canadian Institute for Historical Microreproductions/Institut canadien de microreproductions historiques

© 2000

Technical and Bibliographic Notes / Notes techniques et bibliographiques

The Institute has attempted to obtain the best original copy available for filming. Features of this copy which may be bibliographically unique, which may alter any of the images in the reproduction, or which may significantly change the usual method of filming are checked below.

- Coloured covers / Couverture de couleur
- Covers damaged / Couverture endommagée
- Covers restored and/or laminated / Couverture restaurée et/ou pelliculée
- Cover title missing / Le titre de couverture manque
- Coloured maps / Cartes géographiques en couleur
- Coloured ink (i.e. other than blue or black) / Encre de couleur (i.e. autre que bleue ou noire)
- Coloured plates and/or illustrations / Planches et/ou illustrations en couleur
- Bound with other material / Relié avec d'autres documents
- Only edition available / Seule édition disponible
- Tight binding may cause shadows or distortion along interior margin / La reliure serrée peut causer de l'ombre ou de la distorsion le long de la marge intérieure.
- Blank leaves added during restorations may appear within the text. Whenever possible, these have been omitted from filming / Il se peut que certaines pages blanches ajoutées lors d'une restauration apparaissent dans le texte, mais, lorsque cela était possible, ces pages n'ont pas été filmées.
- Additional comments / Commentaires supplémentaires:

L'Institut a microfilmé le meilleur exemplaire qu'il lui a été possible de se procurer. Les détails de cet exemplaire qui sont peut-être uniques du point de vue bibliographique, qui peuvent modifier une image reproduite, ou qui peuvent exiger une modification dans la méthode normale de filmage sont indiqués ci-dessous.

- Coloured pages / Pages de couleur
- Pages damaged / Pages endommagées
- Pages restored and/or laminated / Pages restaurées et/ou pelliculées
- Pages discoloured, stained or foxed / Pages décolorées, tachetées ou piquées
- Pages detached / Pages détachées
- Showthrough / Transparence
- Quality of print varies / Qualité inégale de l'impression
- Includes supplementary material / Comprend du matériel supplémentaire
- Pages wholly or partially obscured by errata slips, tissues, etc., have been refilmed to ensure the best possible image / Les pages totalement ou partiellement obscurcies par un feuillet d'errata, une pelure, etc., ont été filmées à nouveau de façon à obtenir la meilleure image possible.
- Opposing pages with varying colouration or discolourations are filmed twice to ensure the best possible image / Les pages s'opposant ayant des colorations variables ou des décolorations sont filmées deux fois afin d'obtenir la meilleure image possible.

This item is filmed at the reduction ratio checked below /
Ce document est filmé au taux de réduction indiqué ci-dessous.

10x		14x		18x		22x		26x		30x
	12x		16x		20x		24x		28x	32x

The copy filmed here has been reproduced thanks to the generosity of:

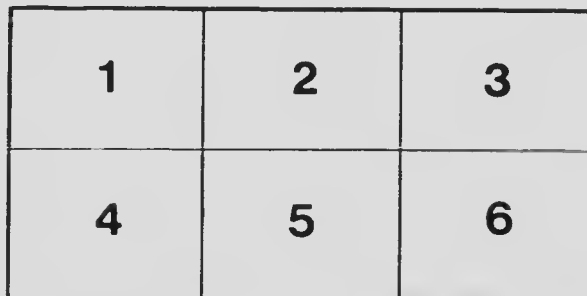
Saint John Regional Library

The images appearing here are the best quality possible considering the condition and legibility of the original copy and in keeping with the filming contract specifications.

Original copies in printed paper covers are filmed beginning with the front cover and ending on the last page with a printed or illustrated impression, or the back cover when appropriate. All other original copies are filmed beginning on the first page with a printed or illustrated impression, and ending on the last page with a printed or illustrated impression.

The last recorded frame on each microfiche shall contain the symbol \rightarrow (meaning "CONTINUED"), or the symbol ∇ (meaning "END"), whichever applies.

Maps, plates, charts, etc., may be filmed at different reduction ratios. Those too large to be entirely included in one exposure are filmed beginning in the upper left hand corner, left to right and top to bottom, as many frames as required. The following diagrams illustrate the method:



L'exemplaire filmé fut reproduit grâce à la générosité de

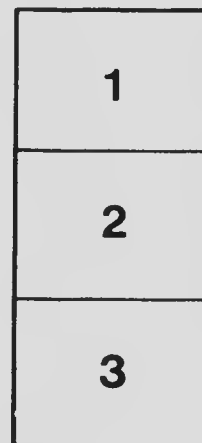
Saint John Regional Library

Les images suivantes ont été reproduites avec le plus grand soin, compte tenu de la condition et de la netteté de l'exemplaire filmé, et en conformité avec les conditions du contrat de filmage.

Les exemplaires originaux dont la couverture en papier est imprimée sont filmés en commençant par le premier plat et en terminant soit par la dernière page qui comporte une empreinte d'impression ou d'illustration, soit par le second plat, selon le cas. Tous les autres exemplaires originaux sont filmés en commençant par la première page qui comporte une empreinte d'impression ou d'illustration et en terminant par la dernière page qui comporte une telle empreinte.

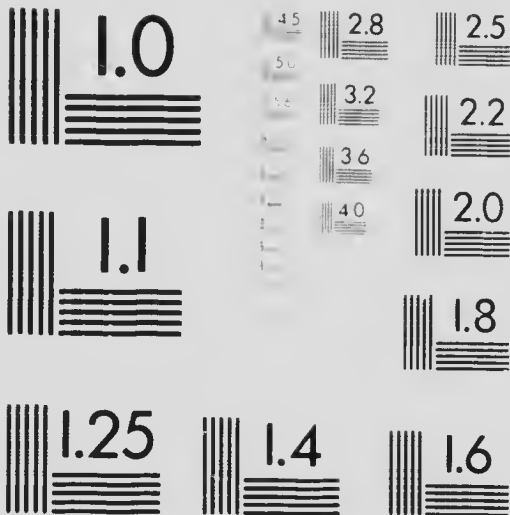
Un des symboles suivants apparaîtra sur la dernière image de chaque microfiche, selon le cas: le symbole \rightarrow signifie "A SUIVRE", le symbole ∇ signifie "FIN".

Les cartes, planches, tableaux, etc., peuvent être filmés à des taux de réduction différents. Lorsque le document est trop grand pour être reproduit en un seul cliché, il est filmé à partir de l'angle supérieur gauche, de gauche à droite, et de haut en bas, en prenant le nombre d'images nécessaire. Les diagrammes suivants illustrent la méthode.



MICROCOPY RESOLUTION TEST CHART

ANSI and ISO TEST CHART No. 2



APPLIED IMAGE Inc

2700 Livingston Street
Rochester, New York 14603 U.S.A.
Telephone: 716-462-5000
TELEX: 99494 FOX



CORSAIR LIBRARY No. 1.

CHESS PROBLEMS

By C. F. STUBBS,
of St. John, N. B.,
Canada.

Composed 1883-1903.

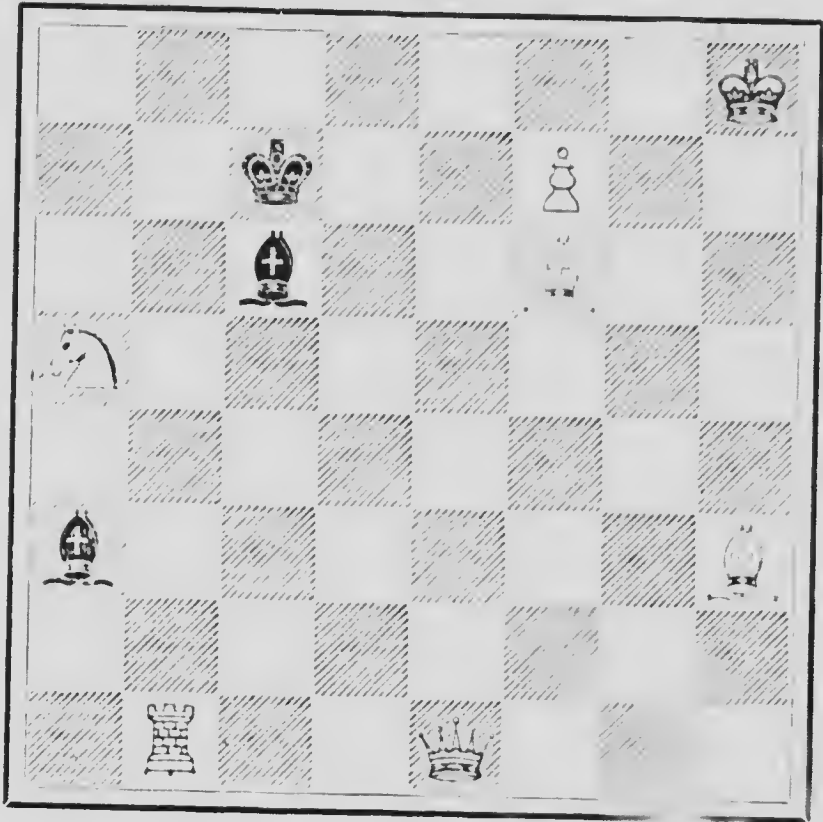


1904.
George H. Walcott, Publisher,
Boston, Massachusetts, U. S. A.

51985

Problem No. 1.

BLACK.

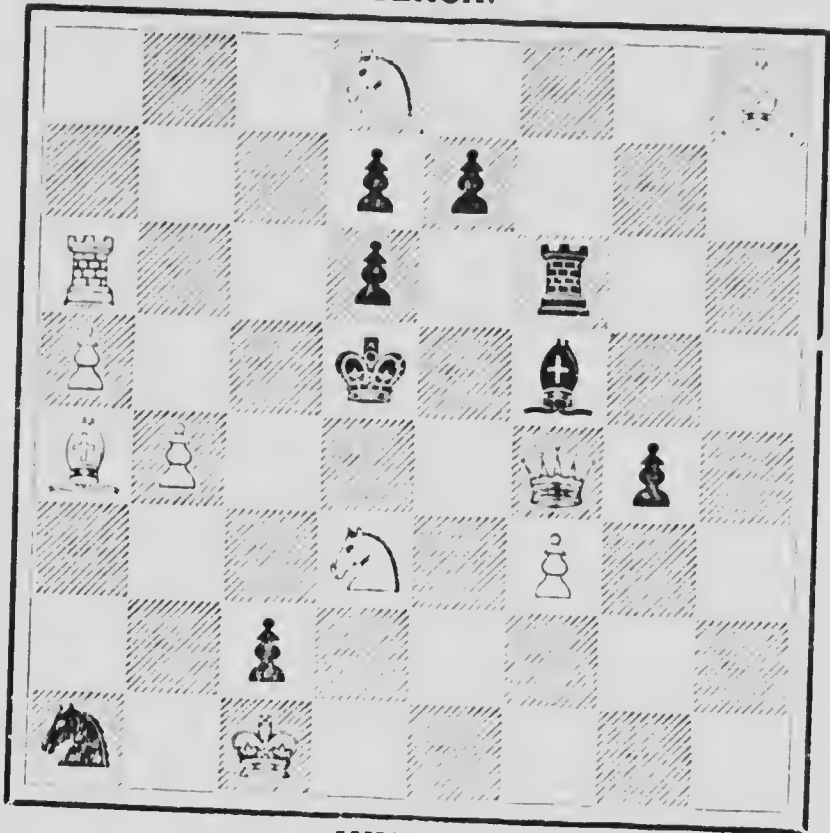


WHITE.

White to play and mate in two moves.

Problem No. 2.

BLACK.

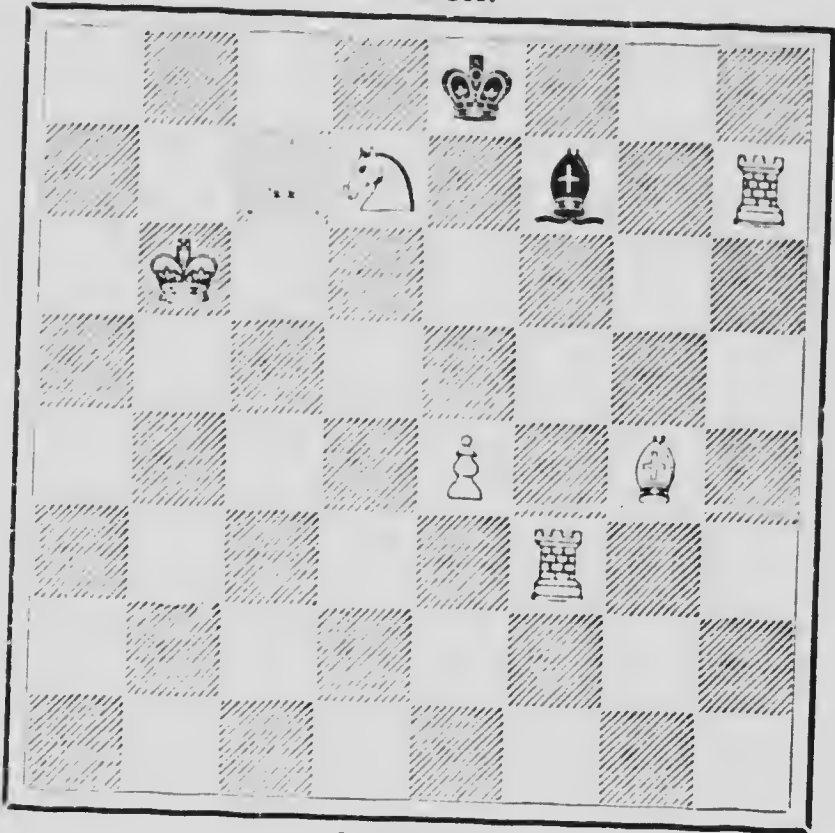


WHITE.

White to play and mate in two moves.

Problem No. 3.

BLACK.

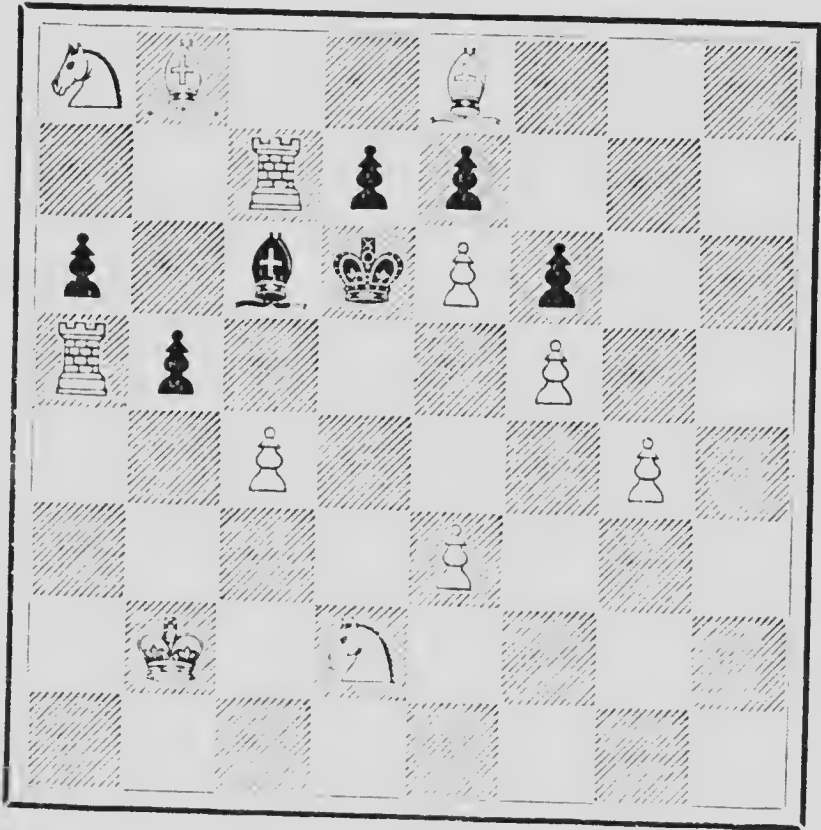


WHITE.

White to play and mate in two moves.

Problem No. 4.

BLACK.

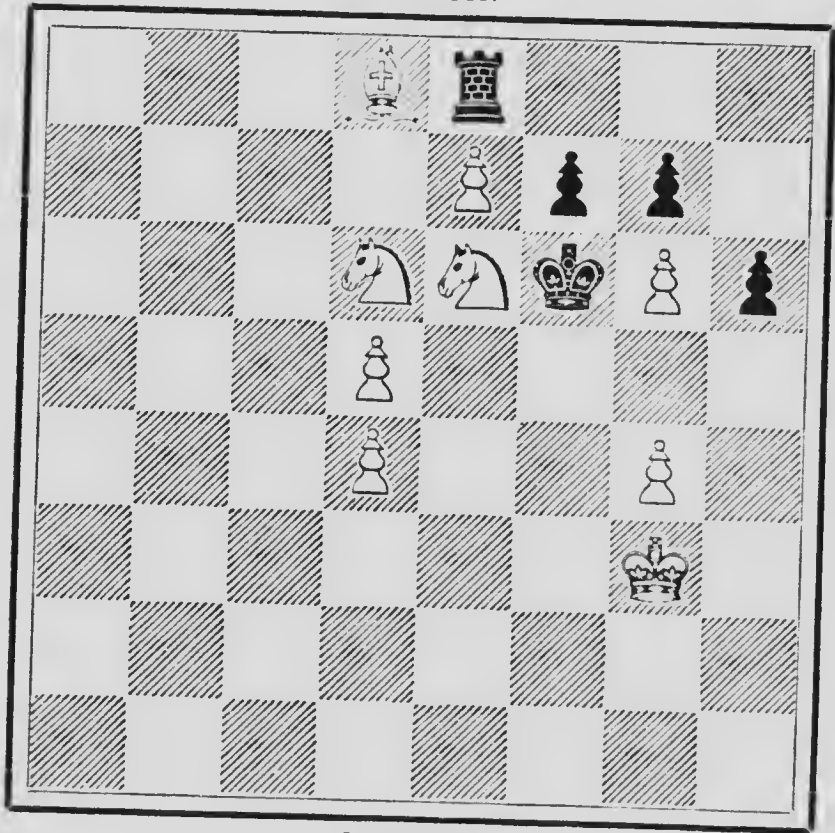


WHITE.

White to play and mate in two moves.

Problem No. 5.

BLACK.

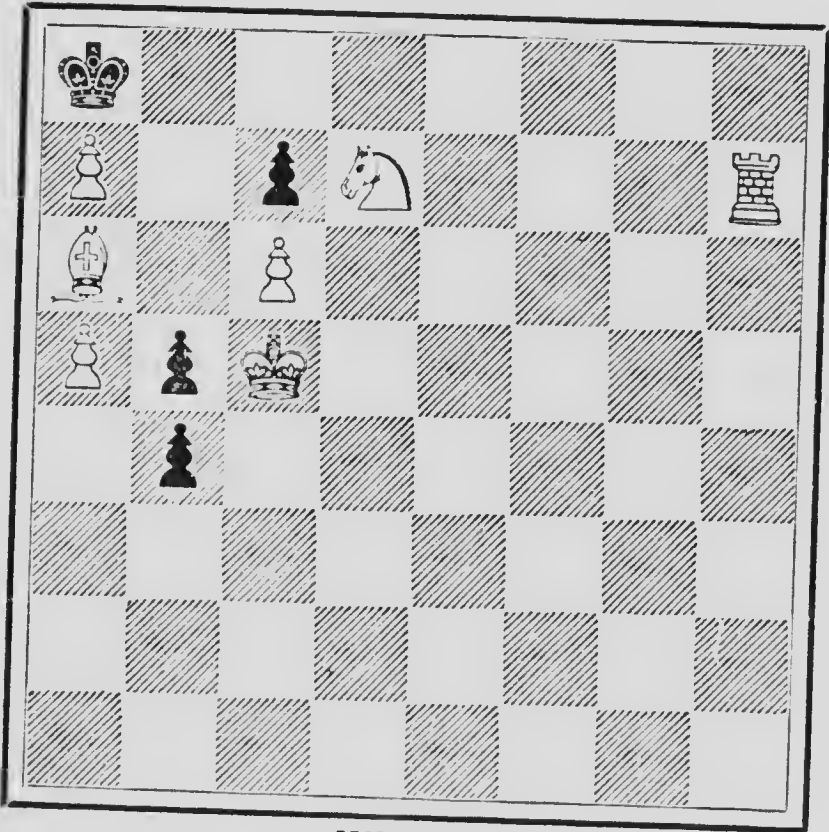


WHITE.

White to play and mate in two moves.

Problem No. 6.

BLACK.

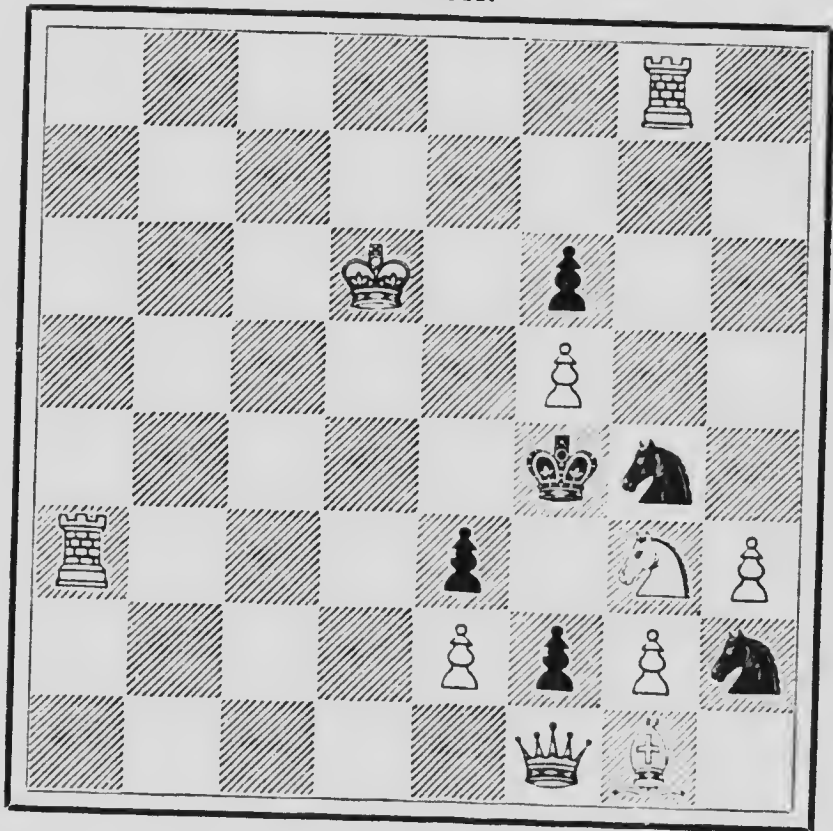


WHITE.

White to play and mate in two moves.

Problem No. 7.

BLACK.

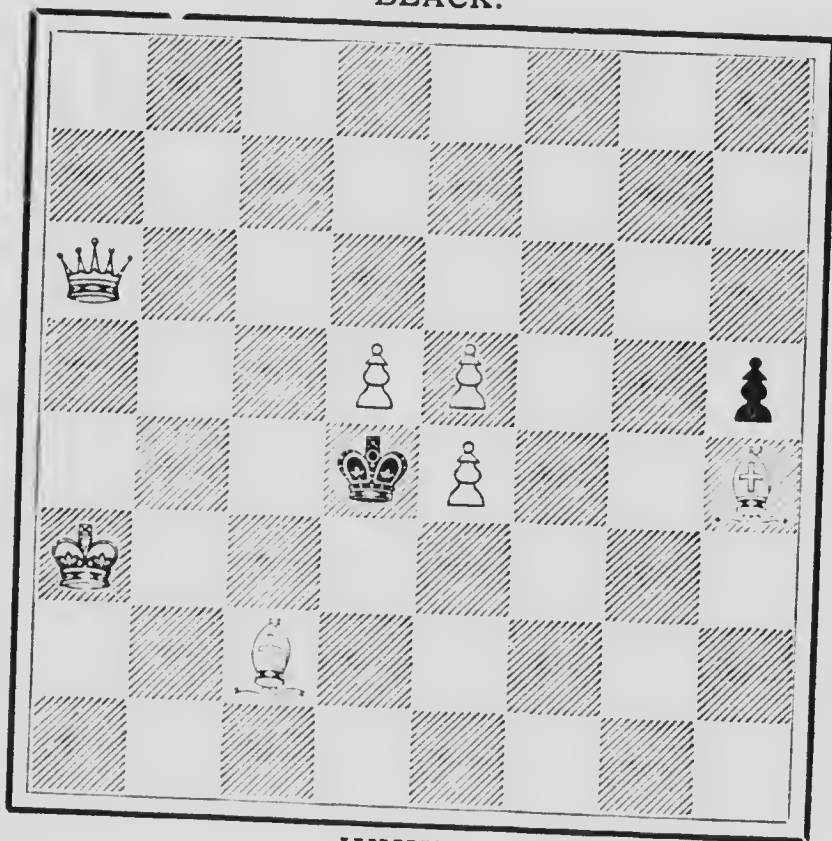


WHITE.

White to play and mate in two moves.

Problem No. 8.

BLACK.

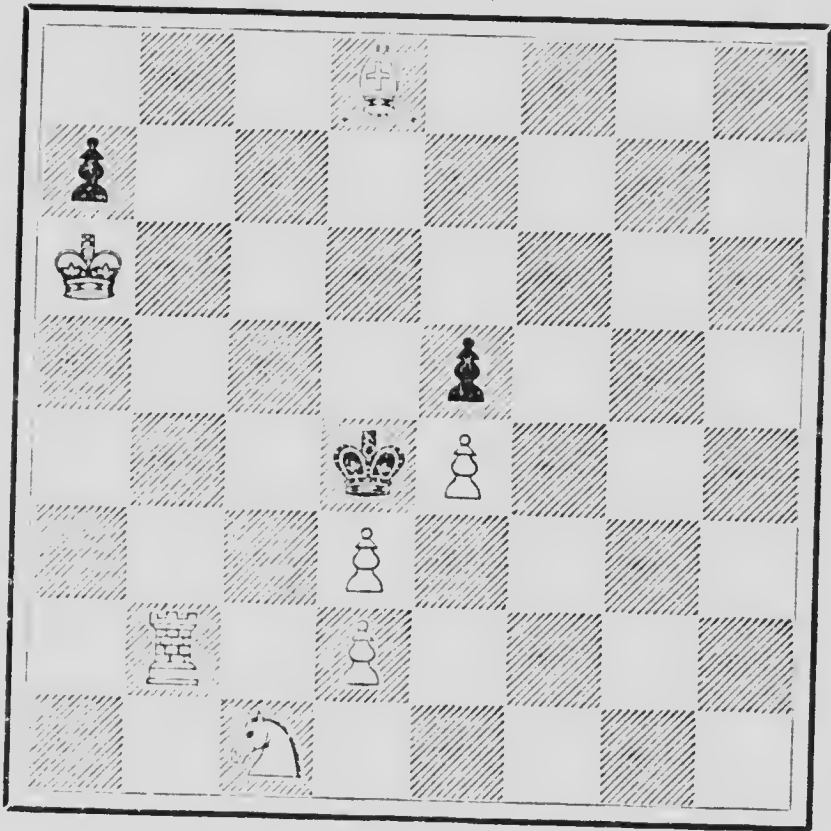


WHITE.

White to play and mate in two moves.

Problem No. 9.

BLACK.

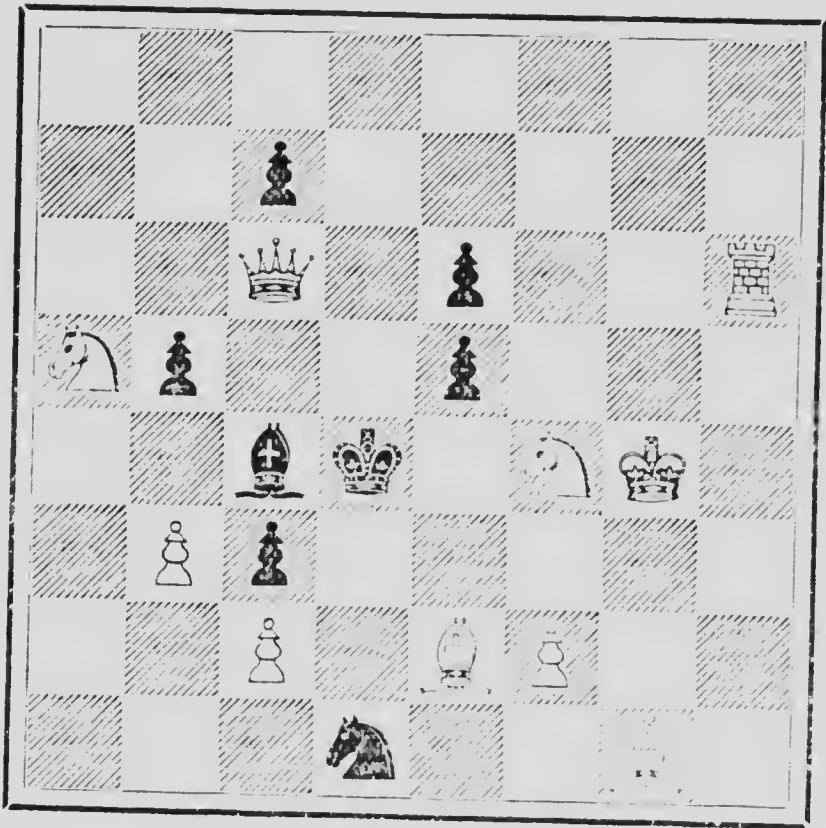


WHITE.

White to play and mate in two moves.

Problem No. 10.

BLACK.

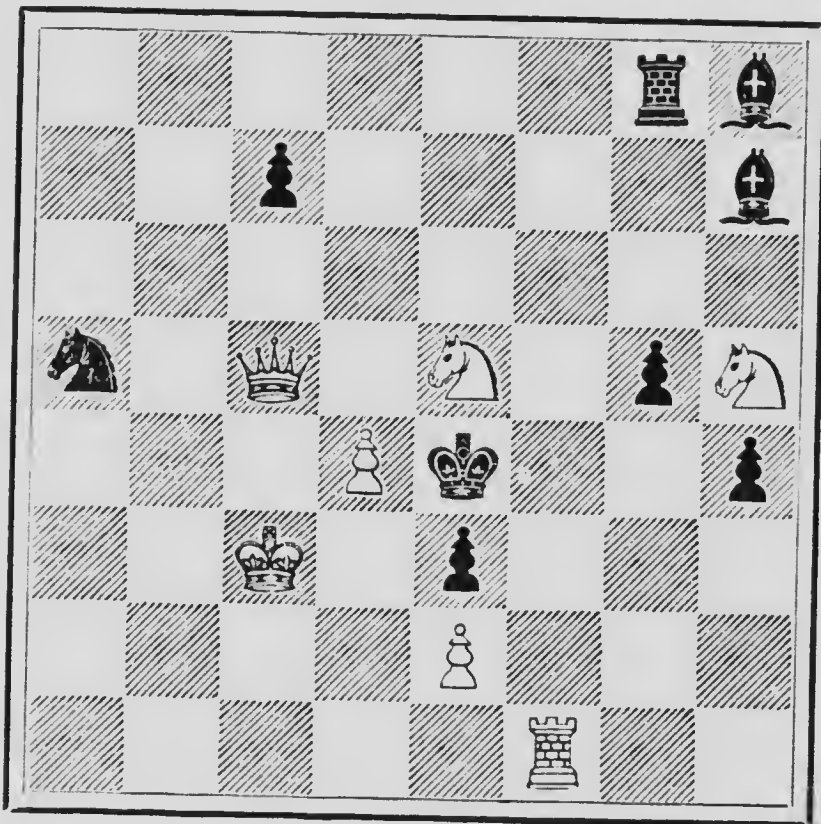


WHITE.

White to play and mate in two moves.

Problem No. II.

BLACK.

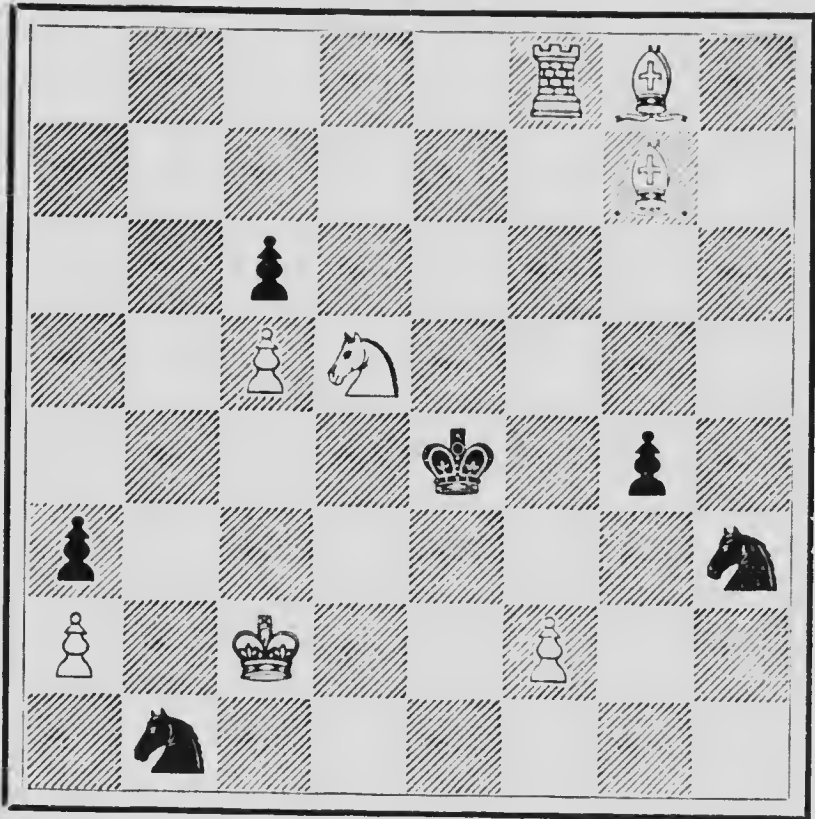


WHITE.

White to play and mate in two moves.

Problem No. 12.

BLACK.

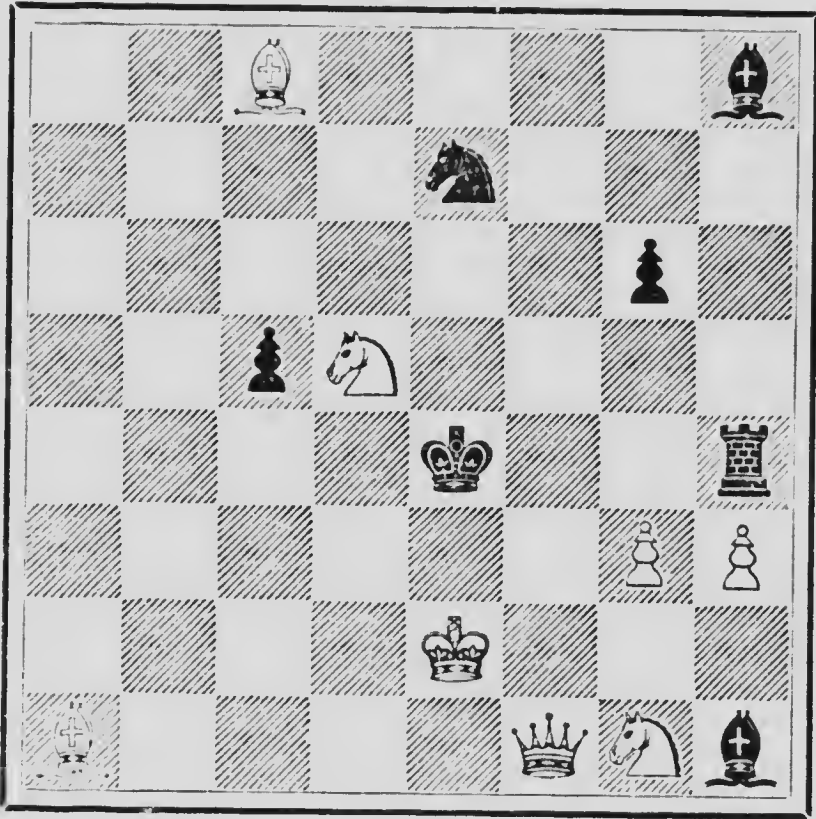


WHITE.

White to play and mate in two moves.

Problem No. 13.

BLACK.

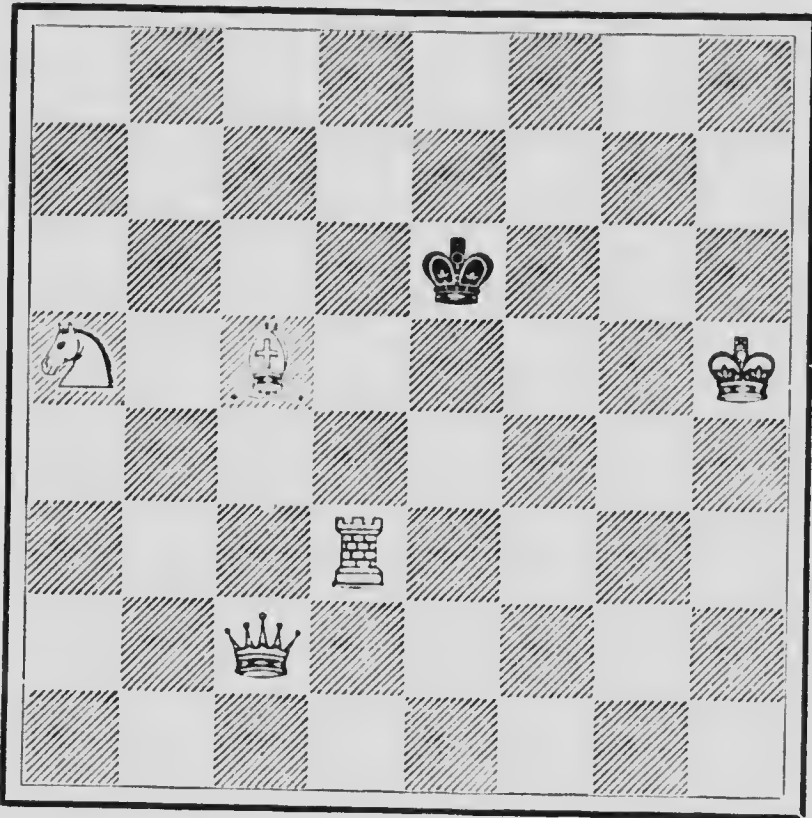


WHITE.

White to play and mate in two moves.

Problem No. 14.

BLACK.

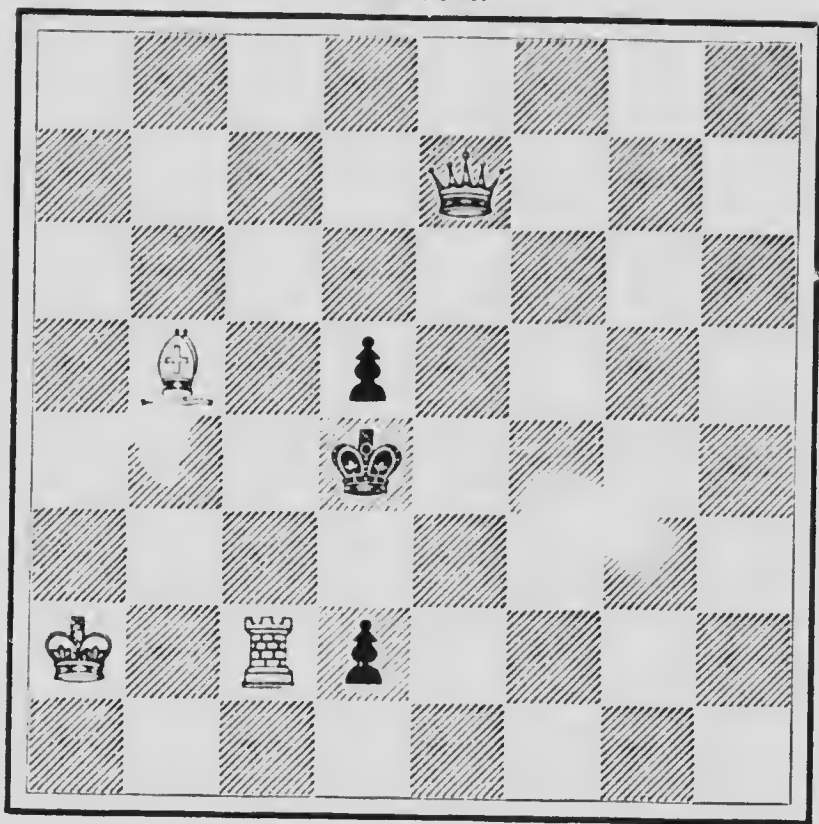


WHITE.

White to play and mate in two moves.

Problem No. 15.

BLACK.

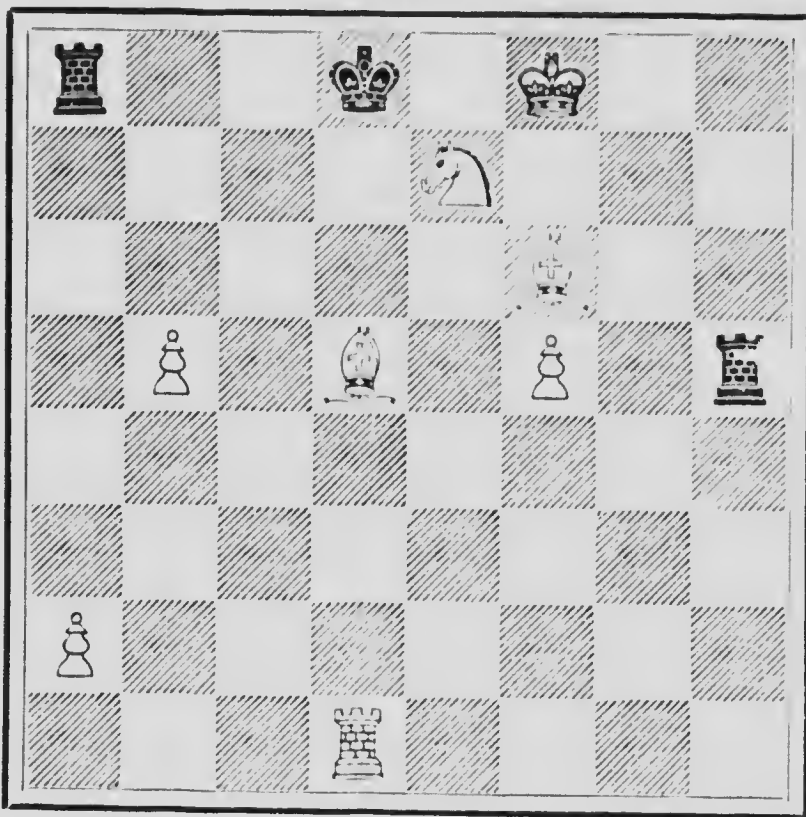


WHITE.

White to play and mate in two moves.

Problem No. 16.

BLACK.

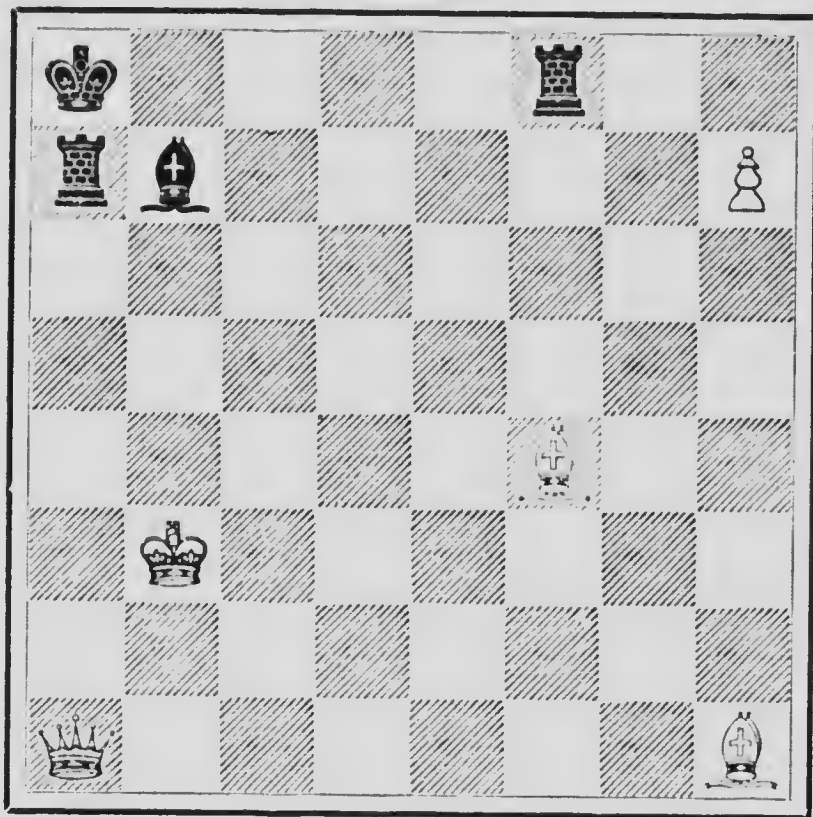


WHITE.

White to play and mate in two moves.

Problem No. 17.

BLACK.

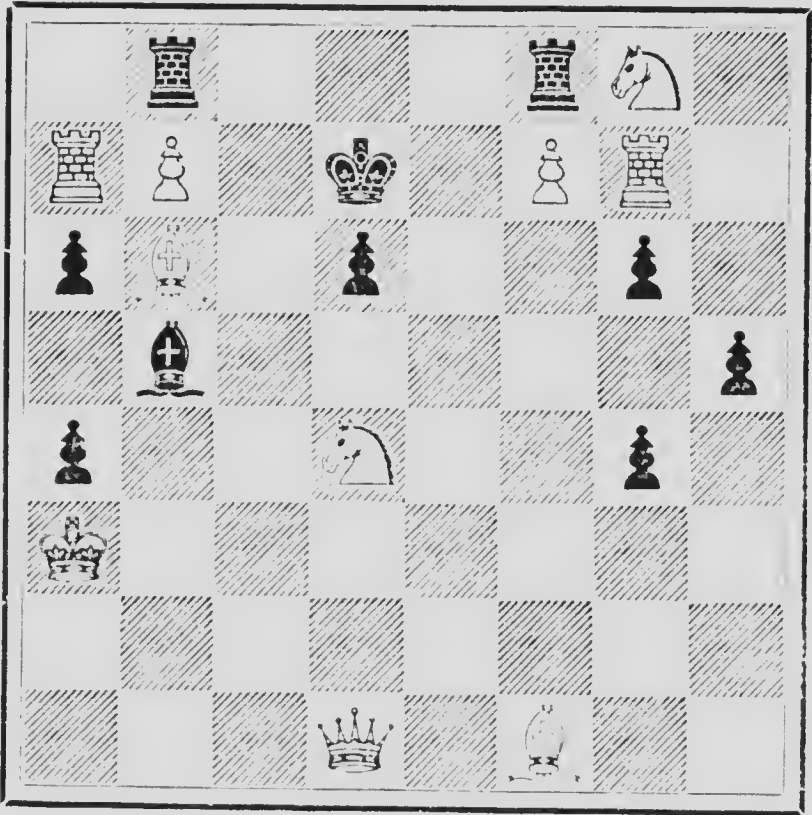


WHITE.

White to play and mate in two moves.

Problem No. 18.

BLACK.

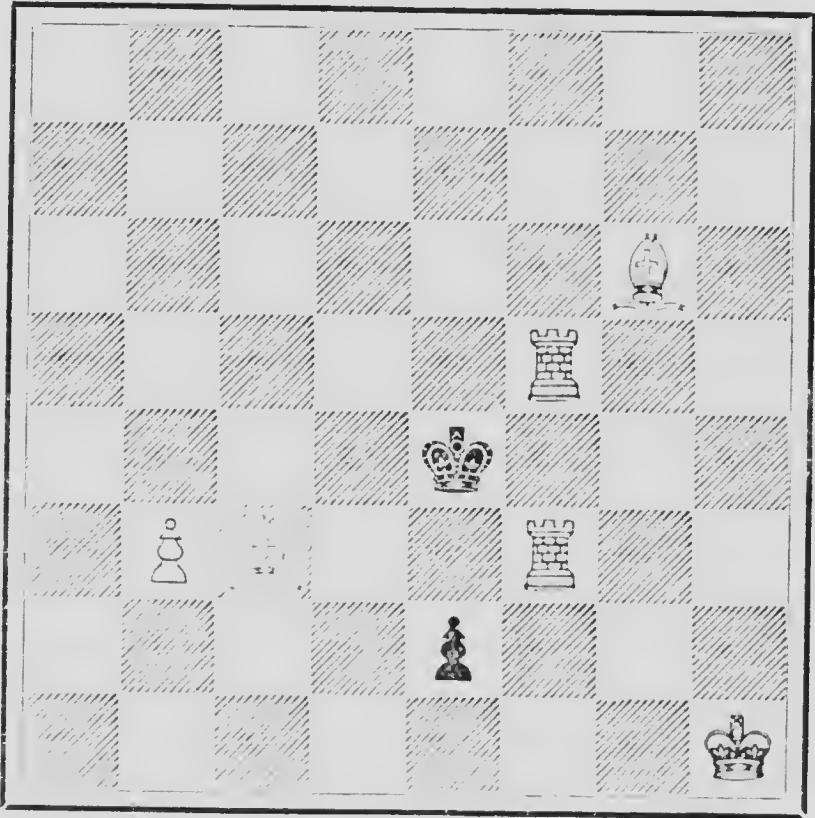


WHITE.

White to play and mate in two moves.

Problem No. 19.

BLACK.

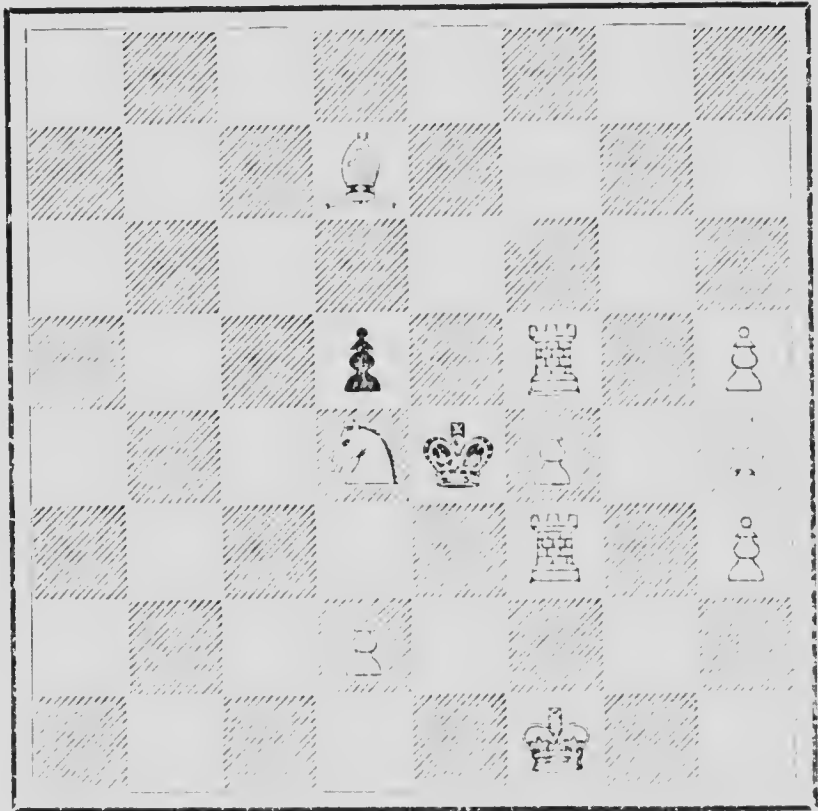


WHITE.

White to play and mate in two moves.

Problem No. 20.

BLACK.

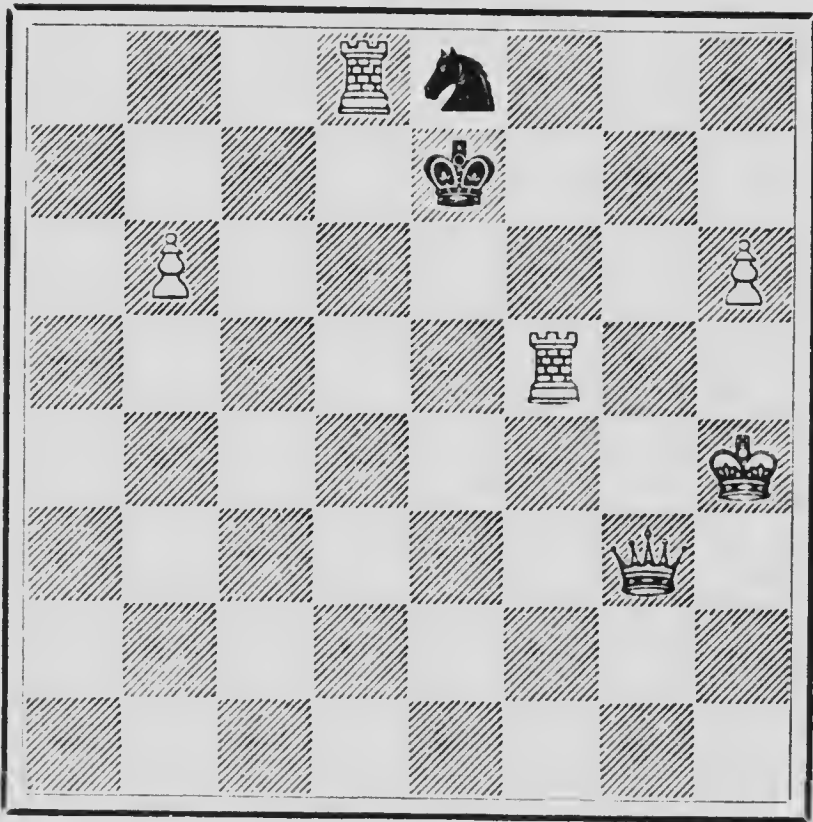


WHITE.

White to play and mate in two moves.

Problem No. 21.

BLACK.

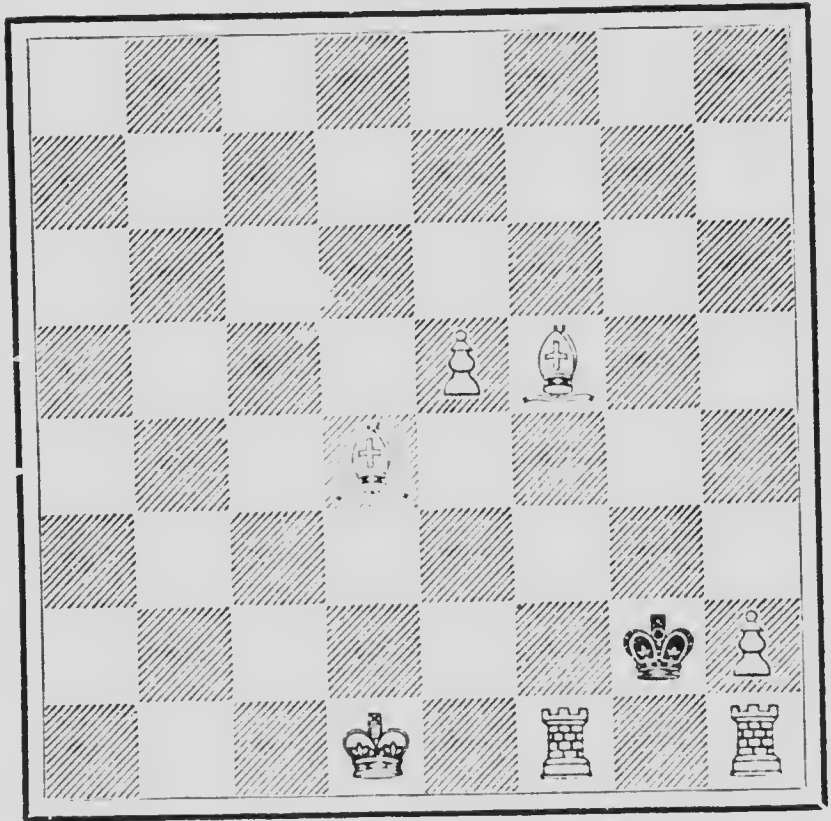


WHITE.

White to play and mate in two moves.

Problem No. 22.

BLACK.

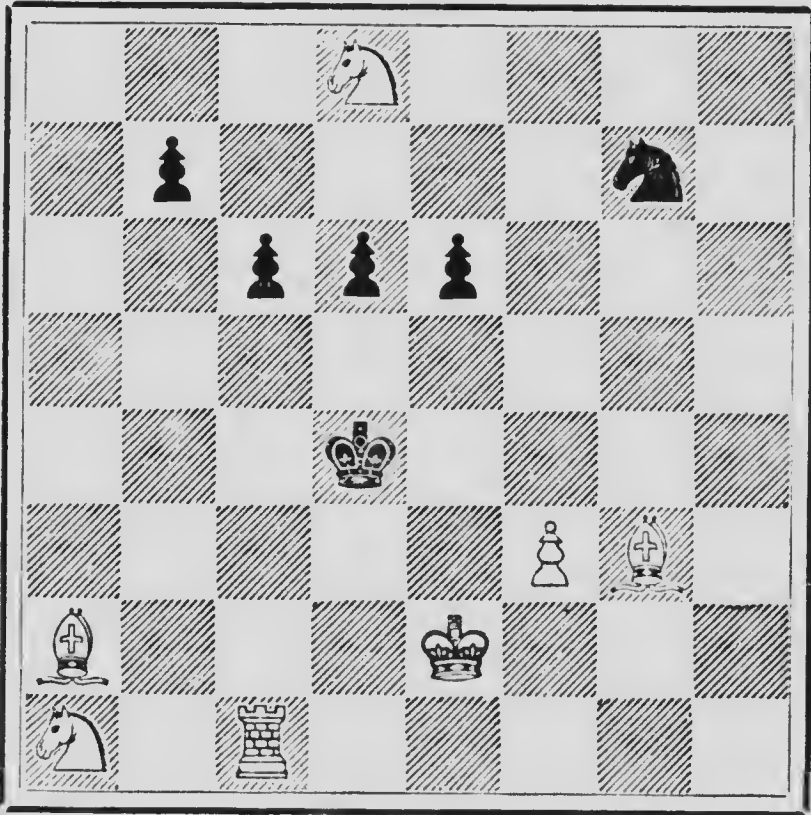


WHITE.

White to play and mate in two moves.

Problem No. 23.

BLACK.

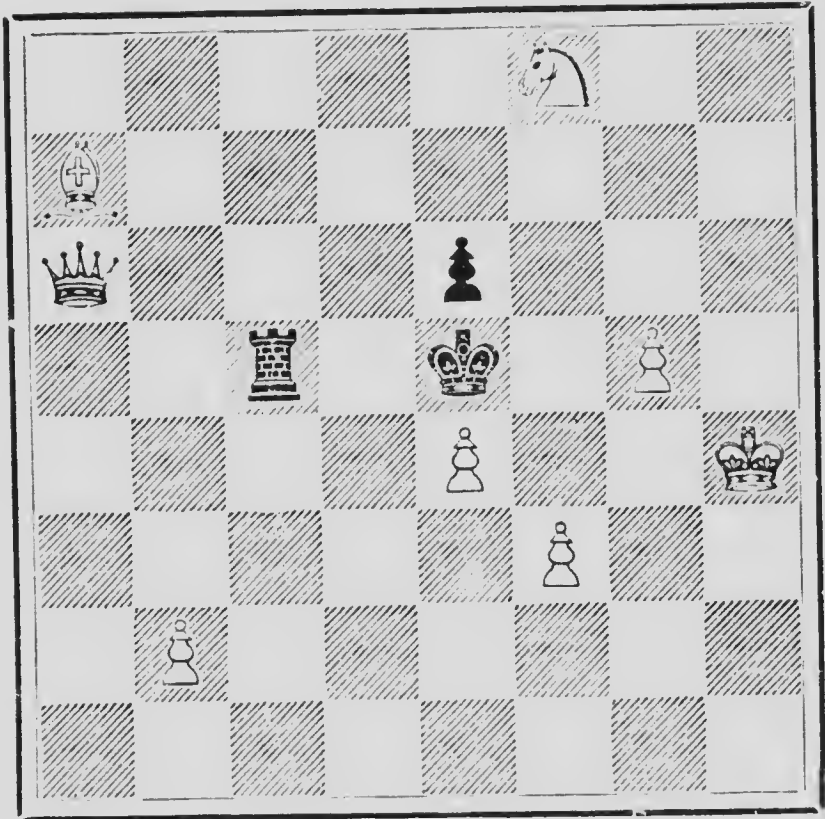


WHITE.

White to play and mate in two moves.

Problem No. 24.

BLACK.

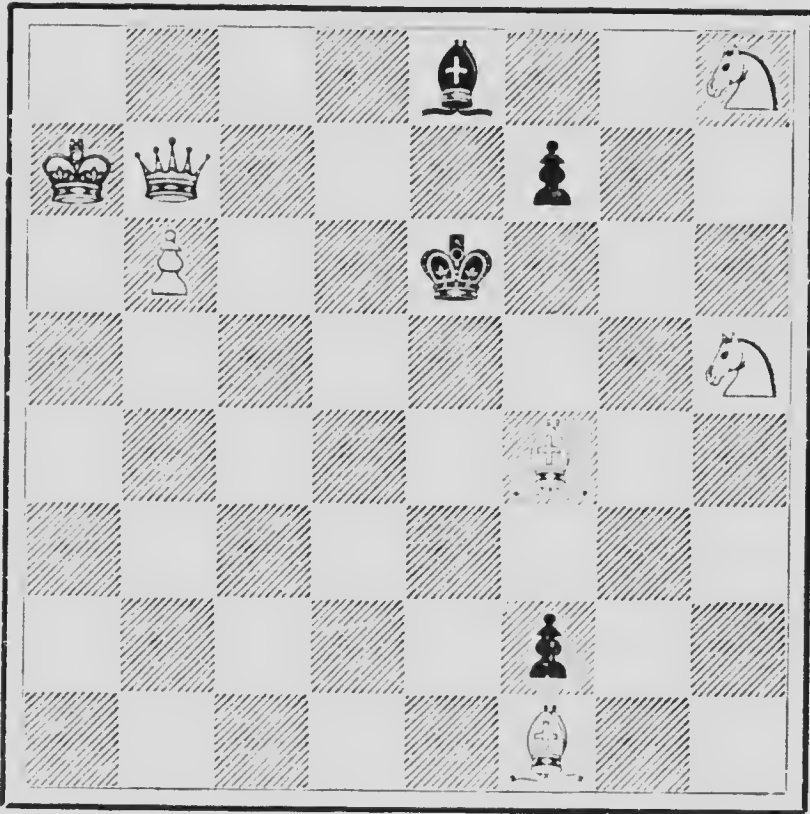


WHITE.

White to play and mate in two moves.

Problem No. 25.

BLACK.

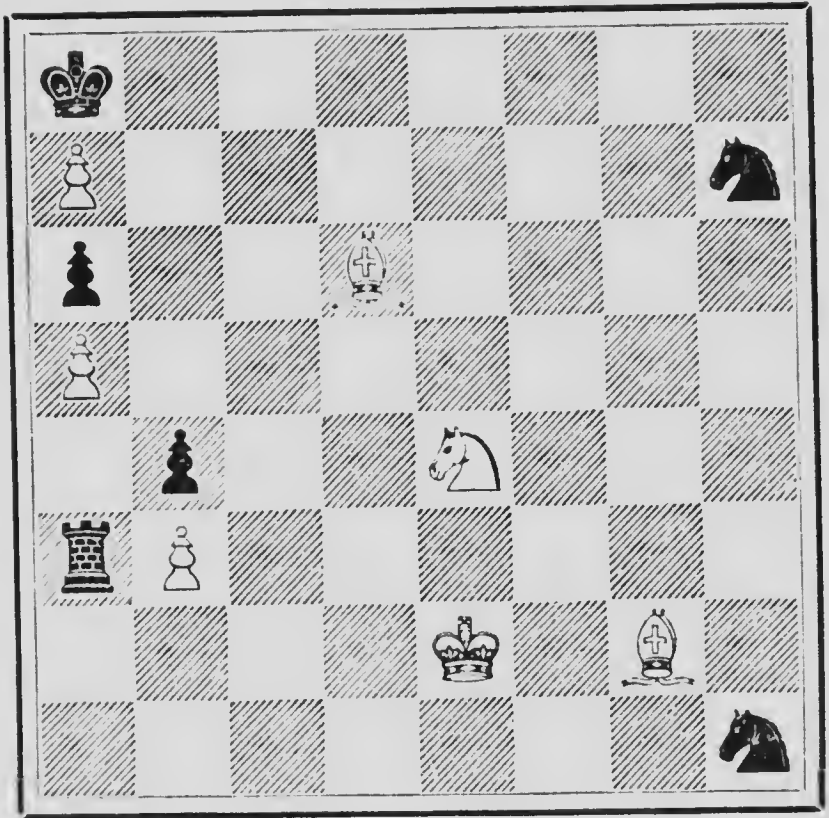


WHITE.

White to play and mate in two moves.

Problem No. 26.

BLACK.

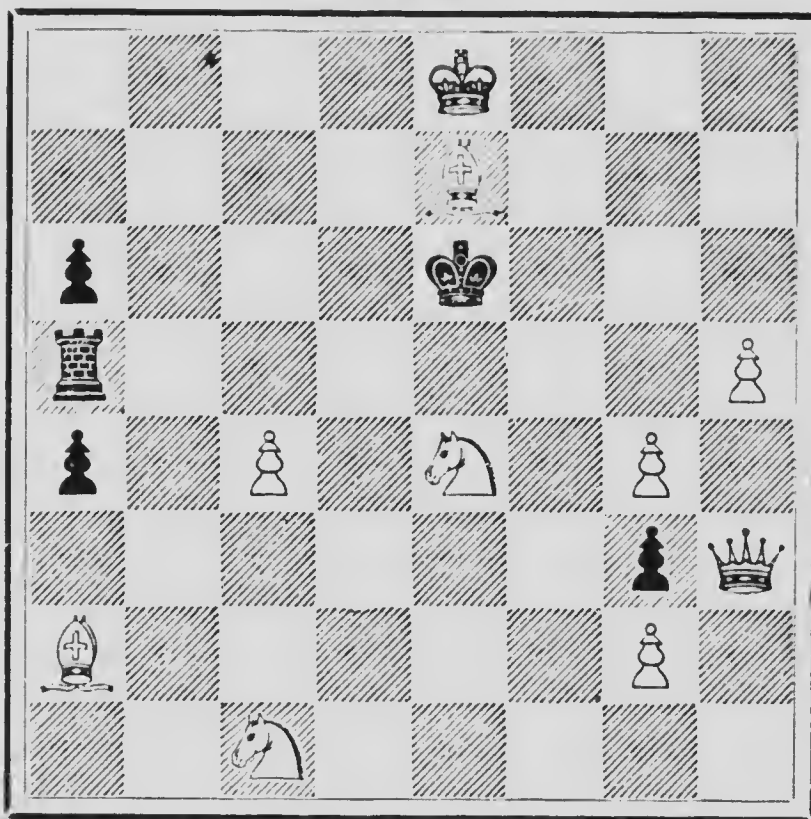


WHITE.

White to play and mate in two moves.

Problem No. 27.

BLACK.

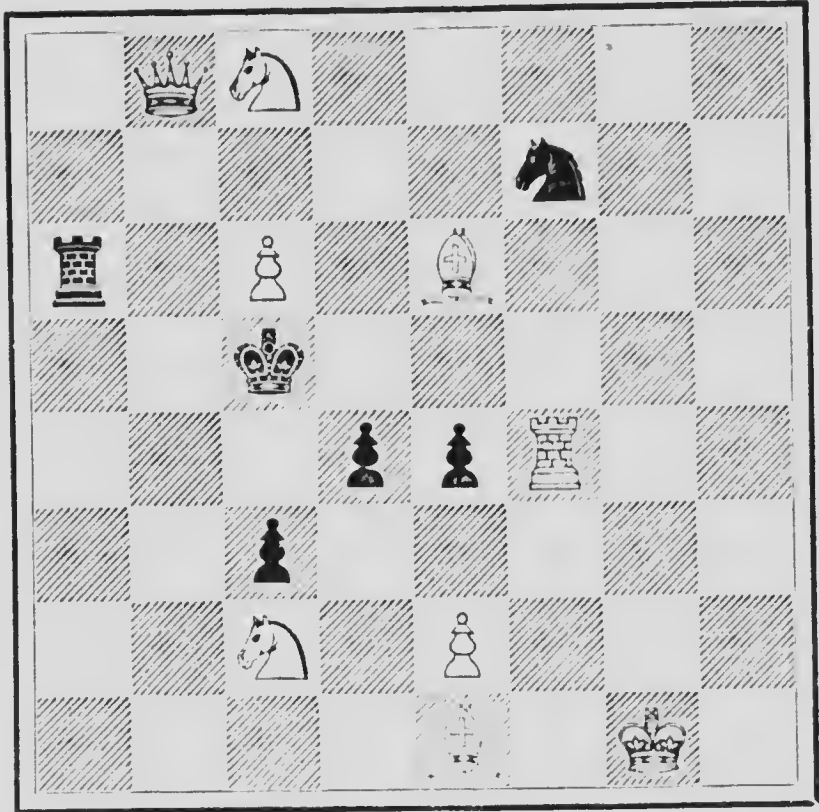


WHITE.

White to play and mate in two moves.

Problem No. 28.

BLACK.

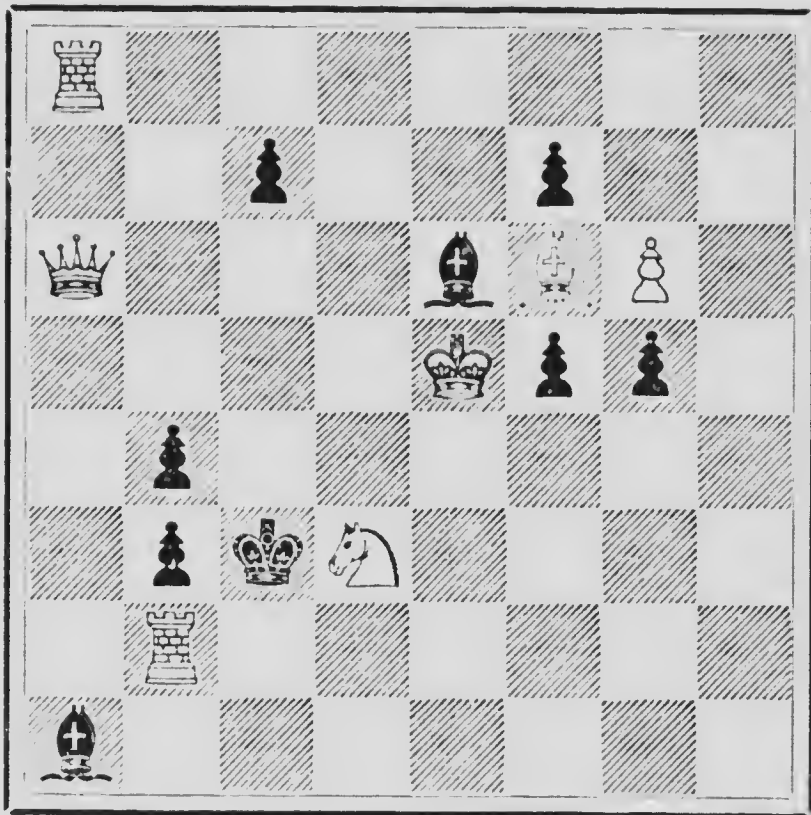


WHITE.

White to play and mate in two moves.

Problem No. 29.

BLACK.

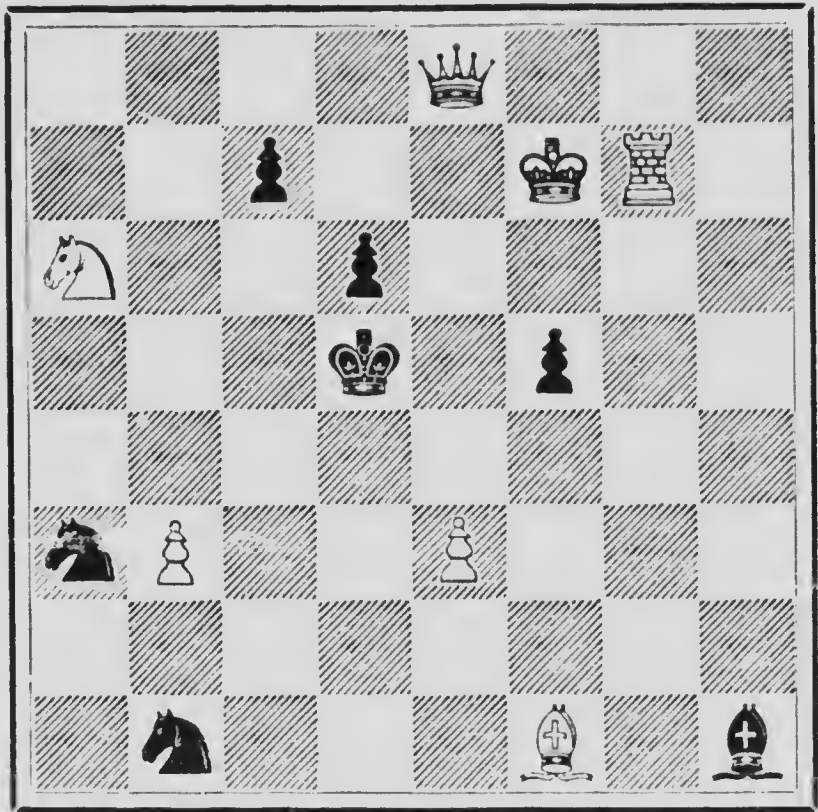


WHITE.

White to play and mate in two moves.

Problem No. 30.

BLACK.

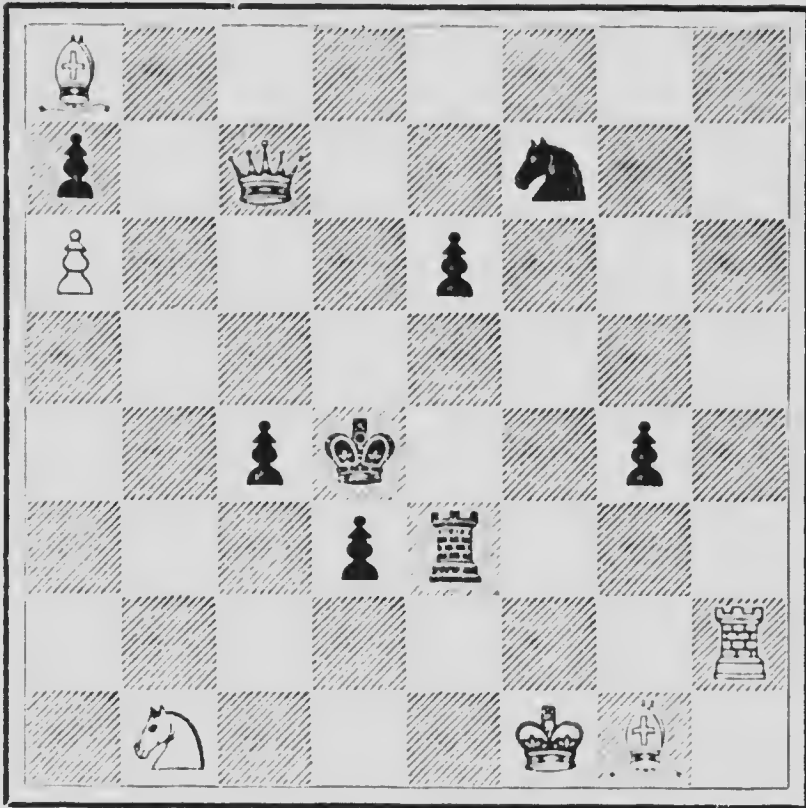


WHITE.

White to play and mate in two moves.

Problem No. 31.

BLACK.

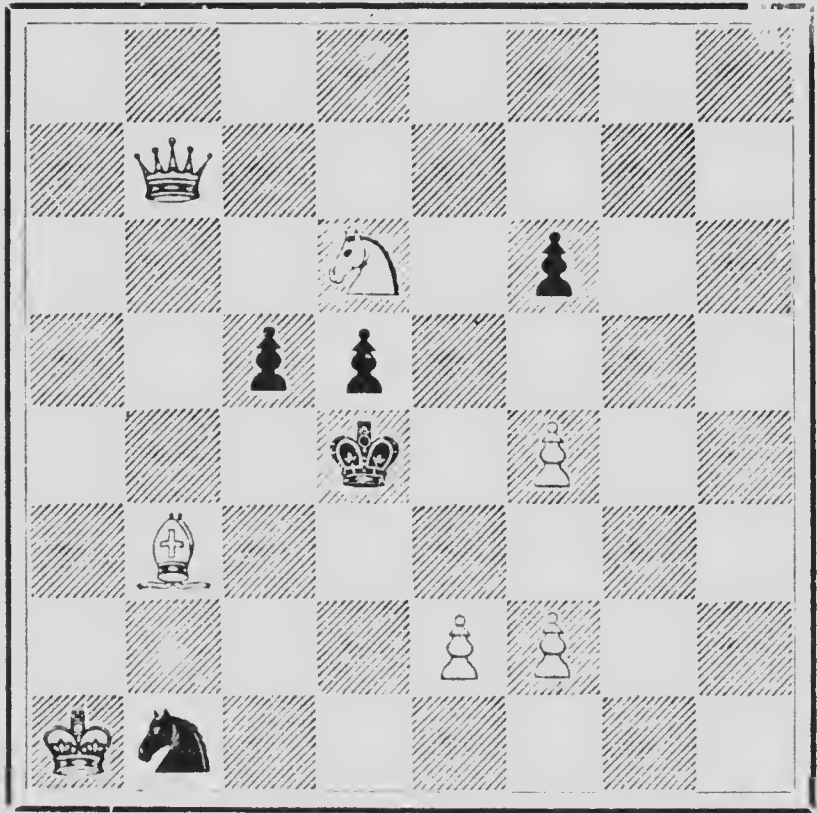


WHITE.

White to play and mate in two moves.

Problem No. 32.

BLACK.

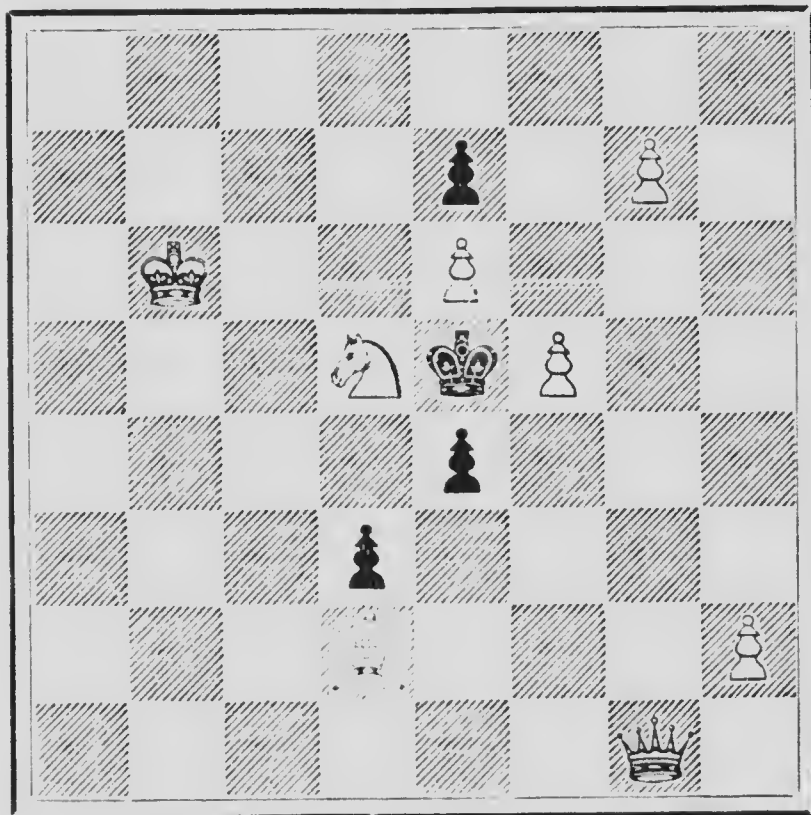


WHITE.

White to play and mate in two moves.

Problem No. 33.

BLACK.

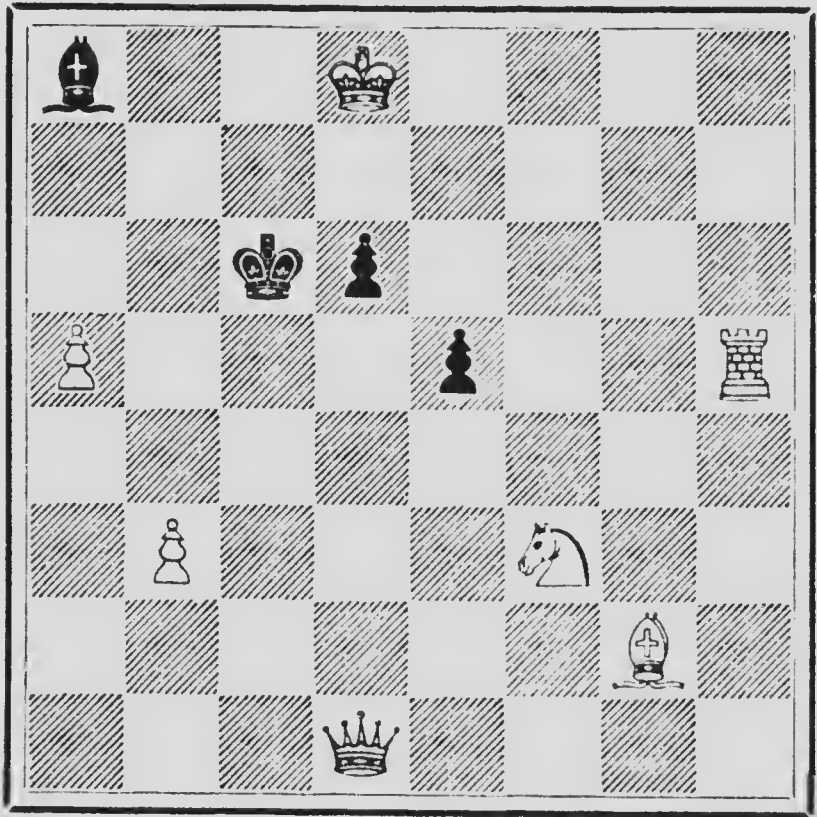


WHITE.

White to play and mate in two moves.

Problem No. 34.

BLACK.

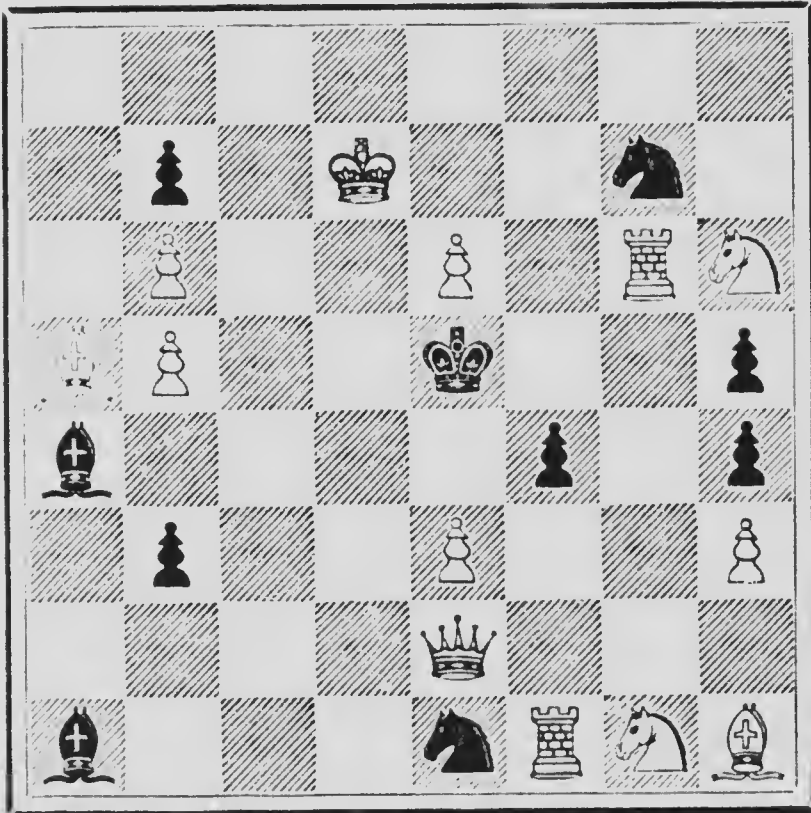


WHITE.

White to play and mate in two moves.

Problem No. 35.

BLACK.

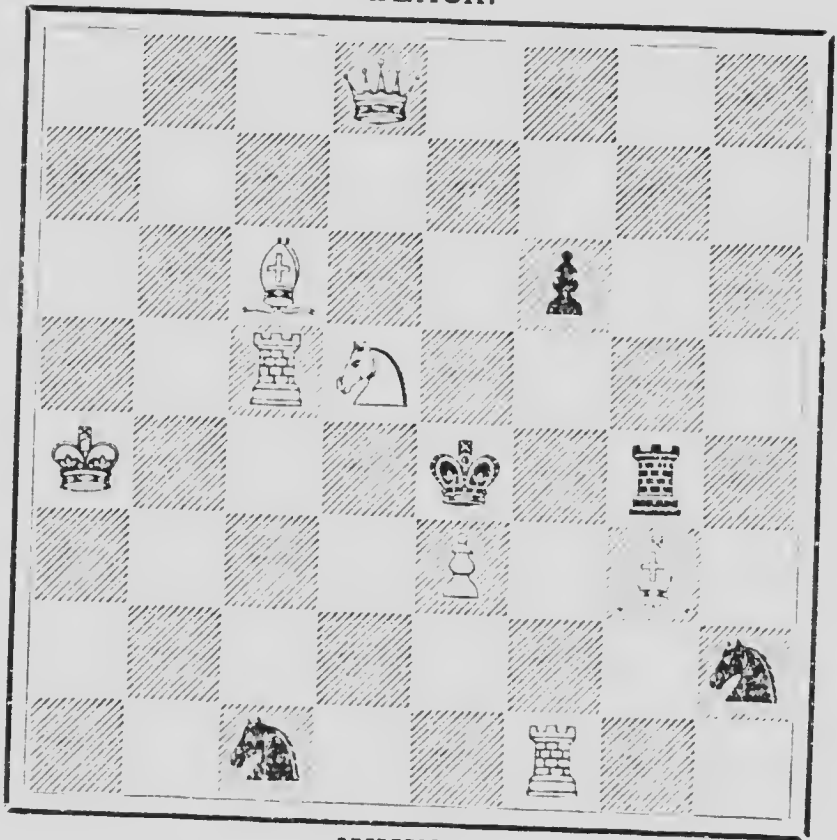


WHITE.

White to play and mate in two moves.

Problem No. 36.

BLACK.

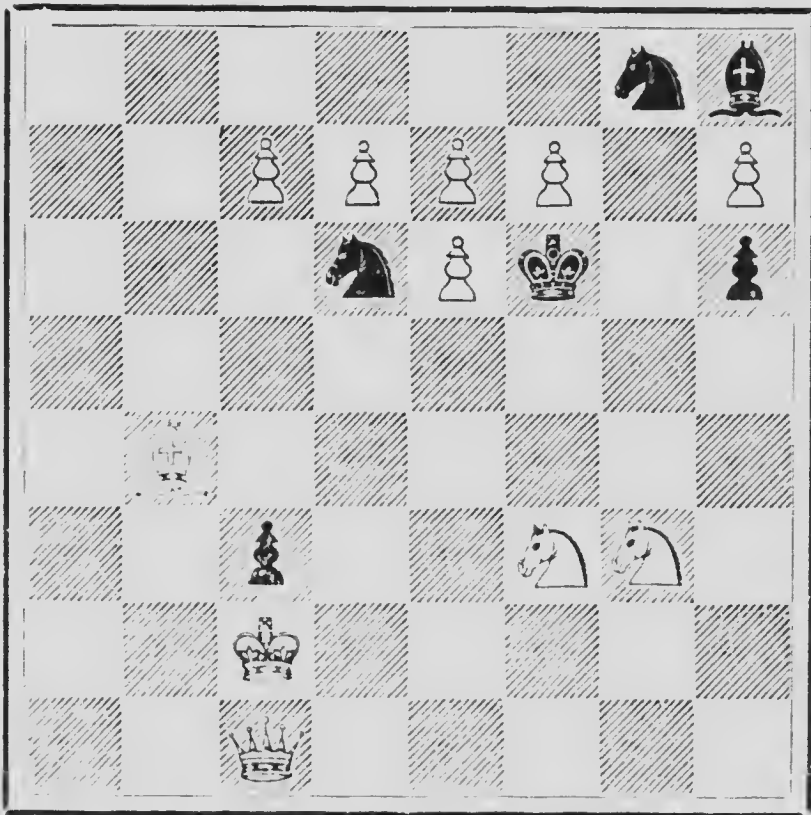


WHITE.

White to play and mate in two moves.

Problem No. 37.

BLACK.

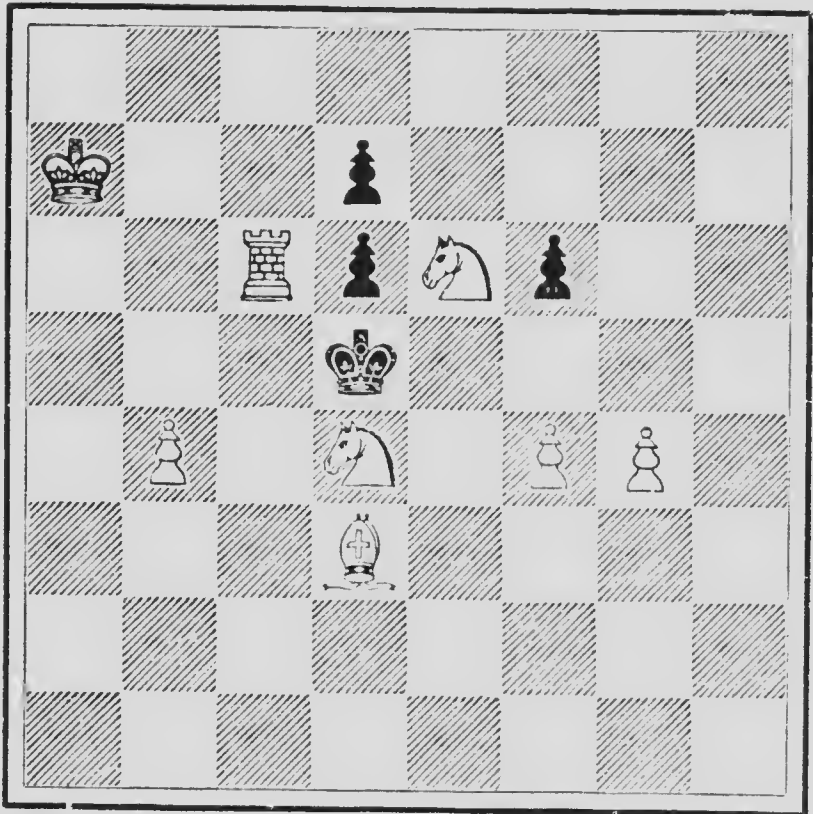


WHITE.

White to play and mate in two moves.

Problem No. 38.

BLACK.

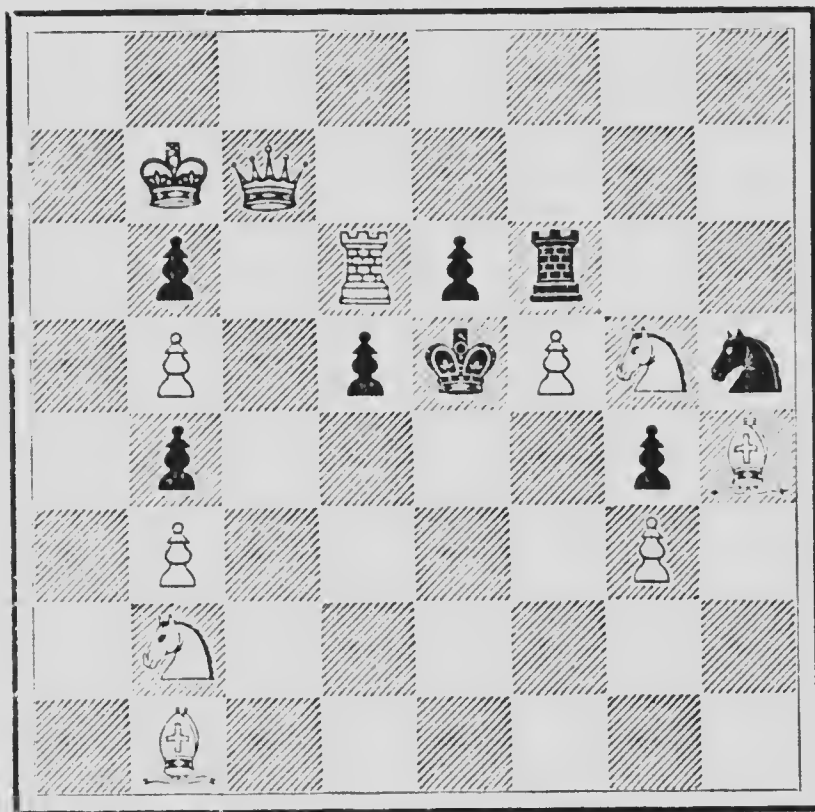


WHITE.

White to play and mate in two moves.

Problem No. 39.

BLACK.

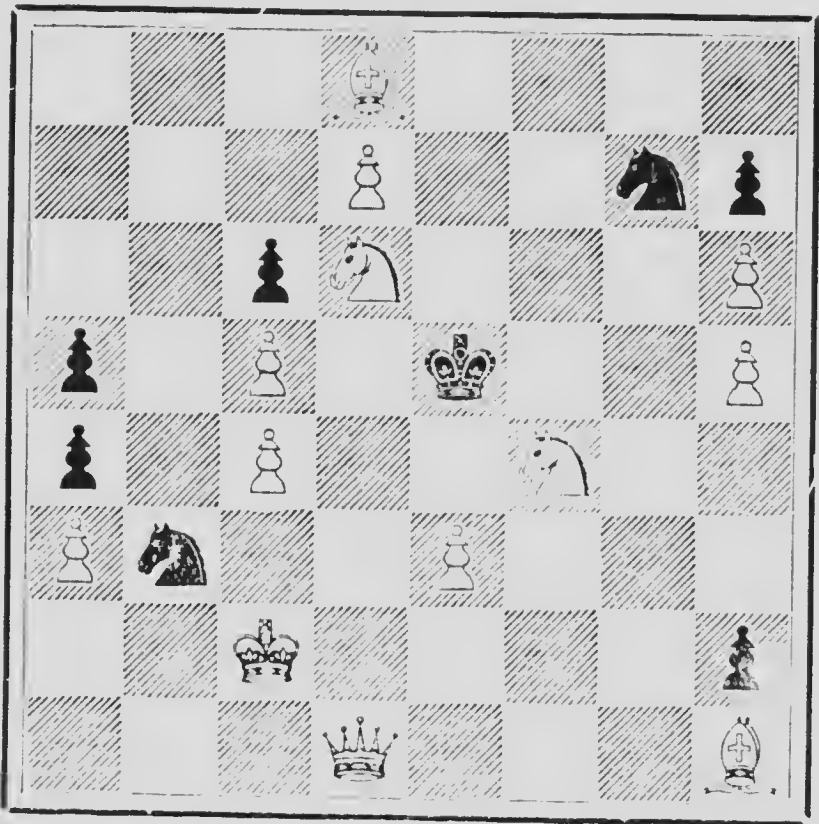


WHITE.

White to play and mate in two moves.

Problem No. 40.

BLACK.

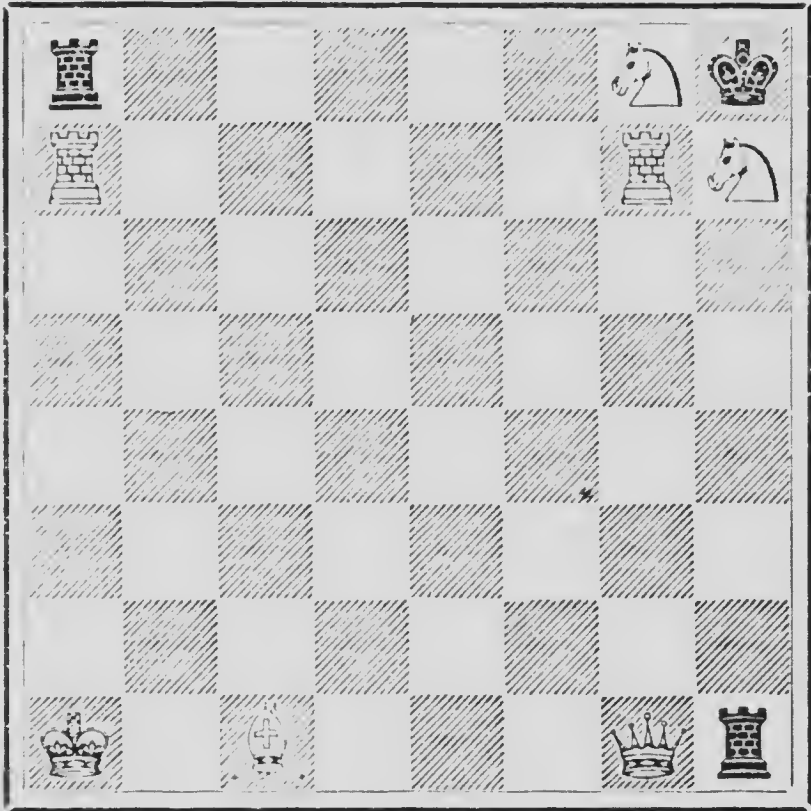


WHITE.

White to play and mate in two moves.

Problem No. 41.

BLACK.

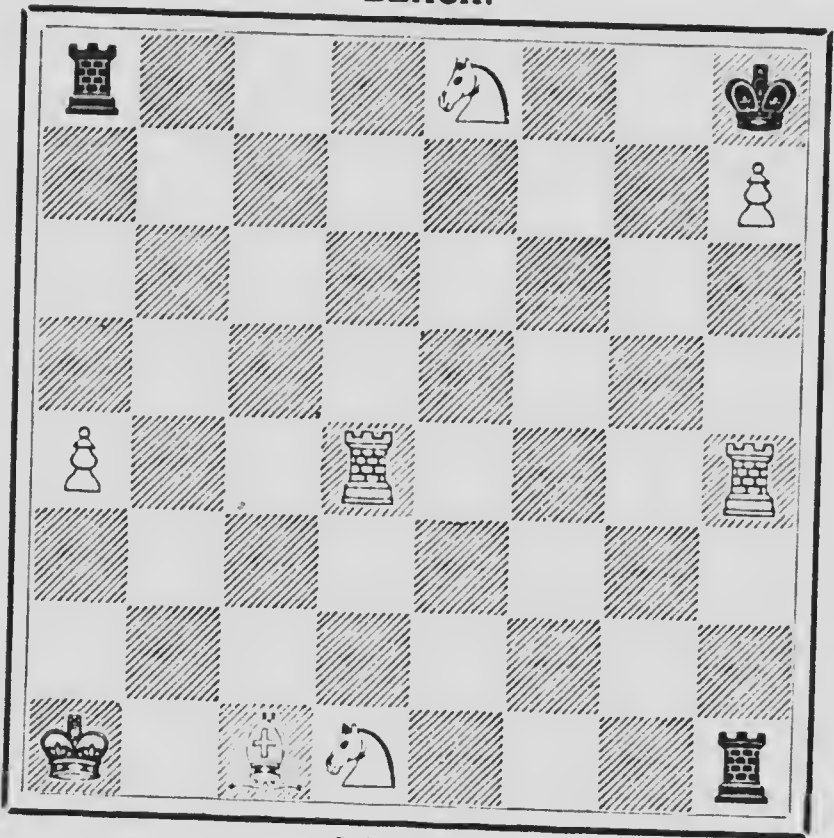


WHITE.

White to play and mate in two moves.

Problem No. 42.

BLACK.

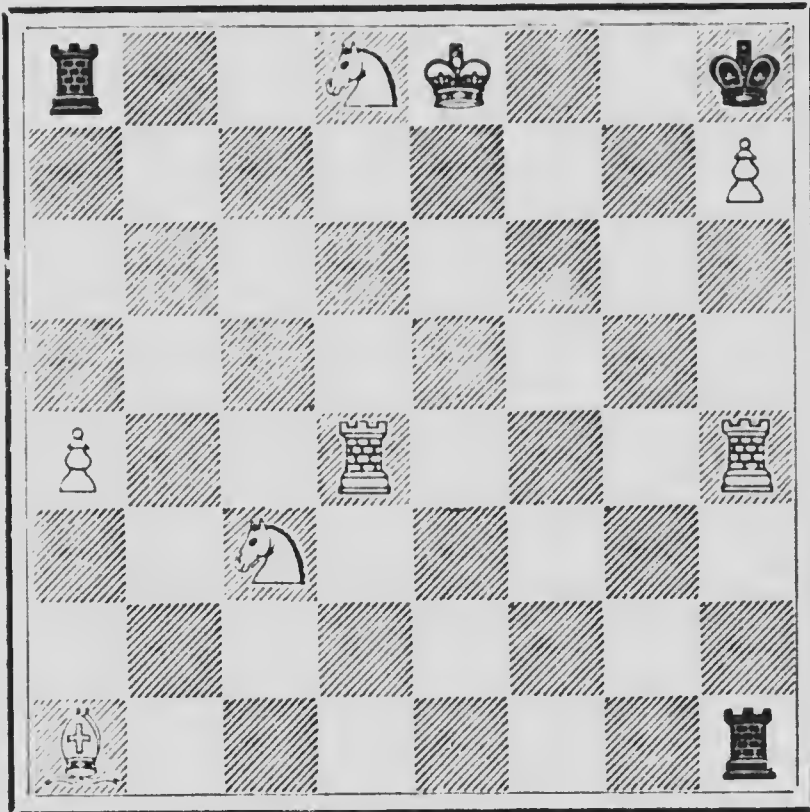


WHITE.

White to play and mate in two moves.

Problem No. 43.

BLACK.

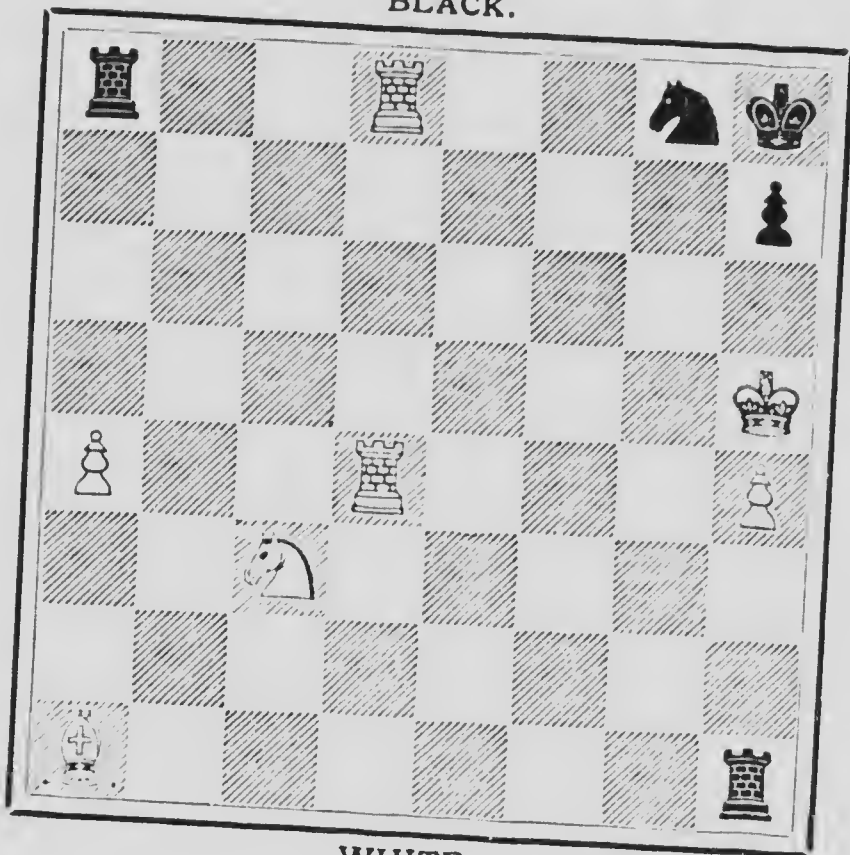


WHITE.

White to play and mate in two moves.

Problem No. 44.

BLACK.

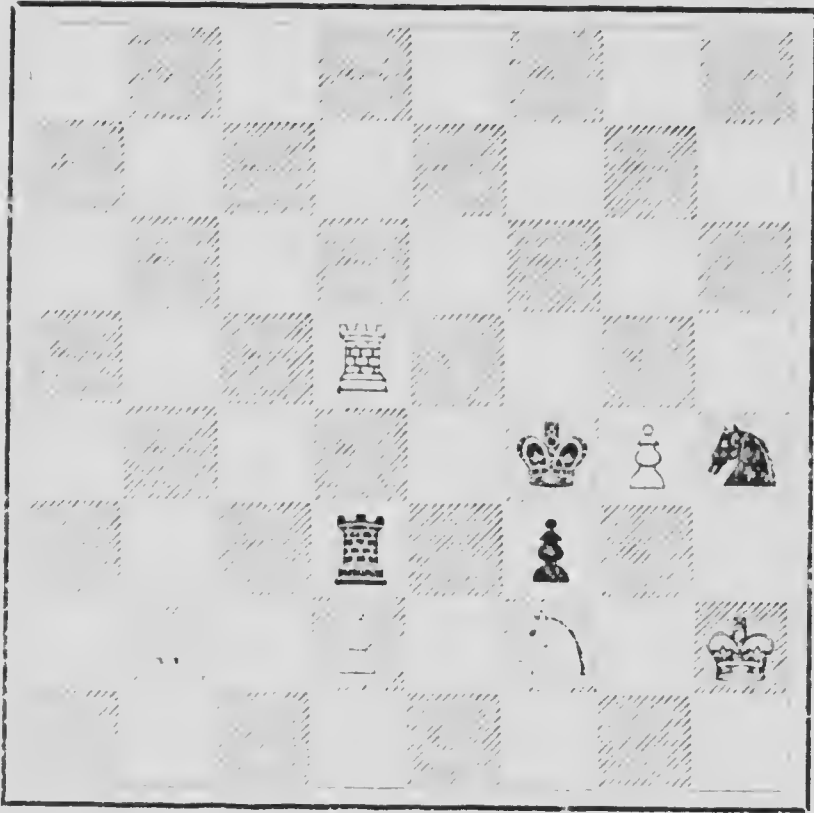


WHITE.

White to play and mate in two moves.

Problem No. 45.

BLACK.

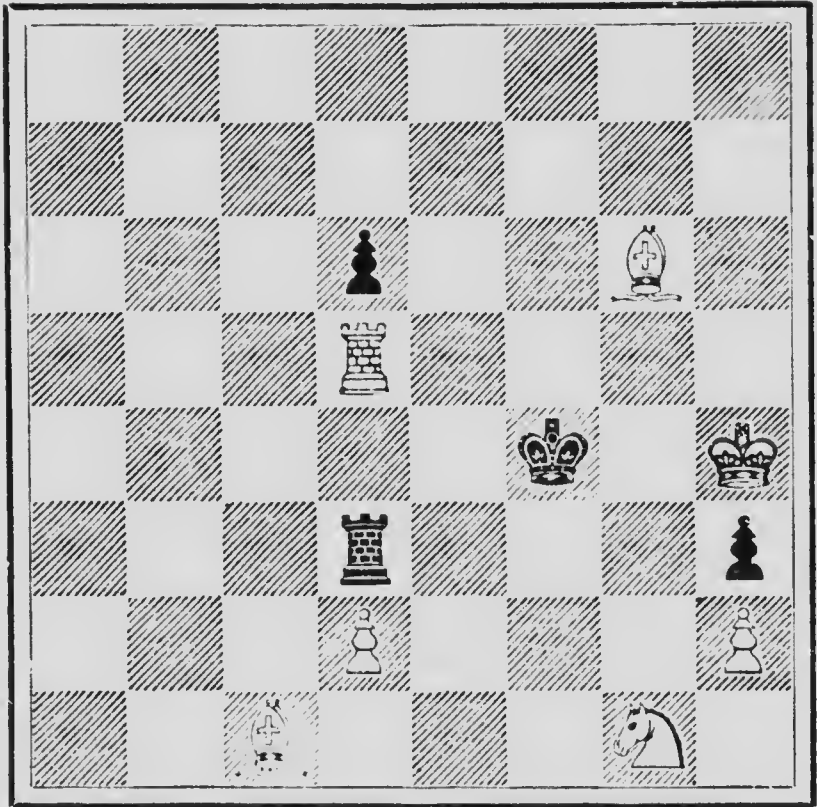


WHITE.

White to play and mate in two moves.

Problem No. 46.

BLACK.

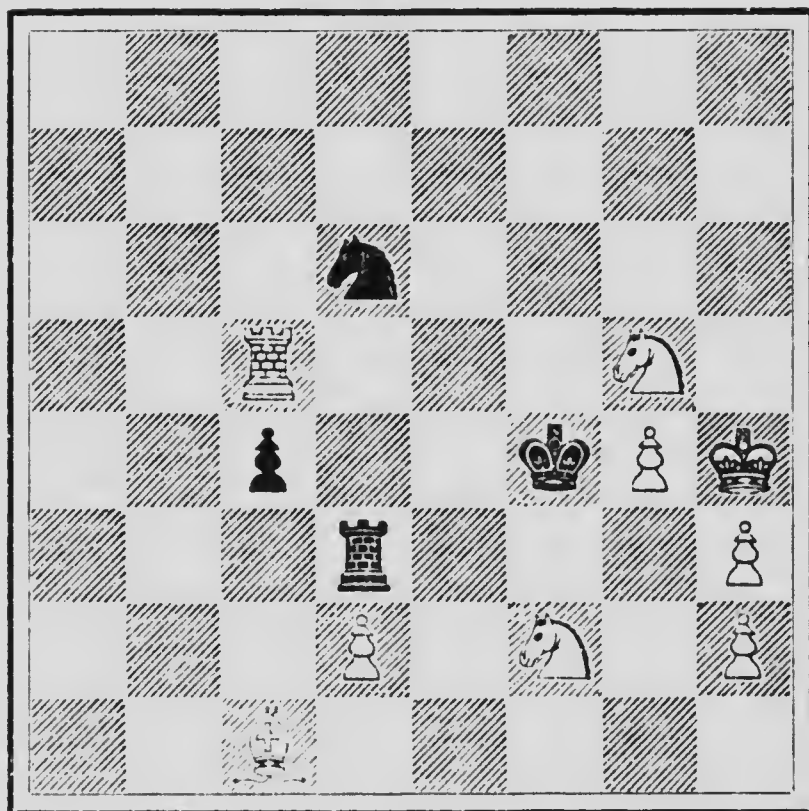


WHITE.

White to play and mate in two moves.

Problem No. 47.

BLACK.

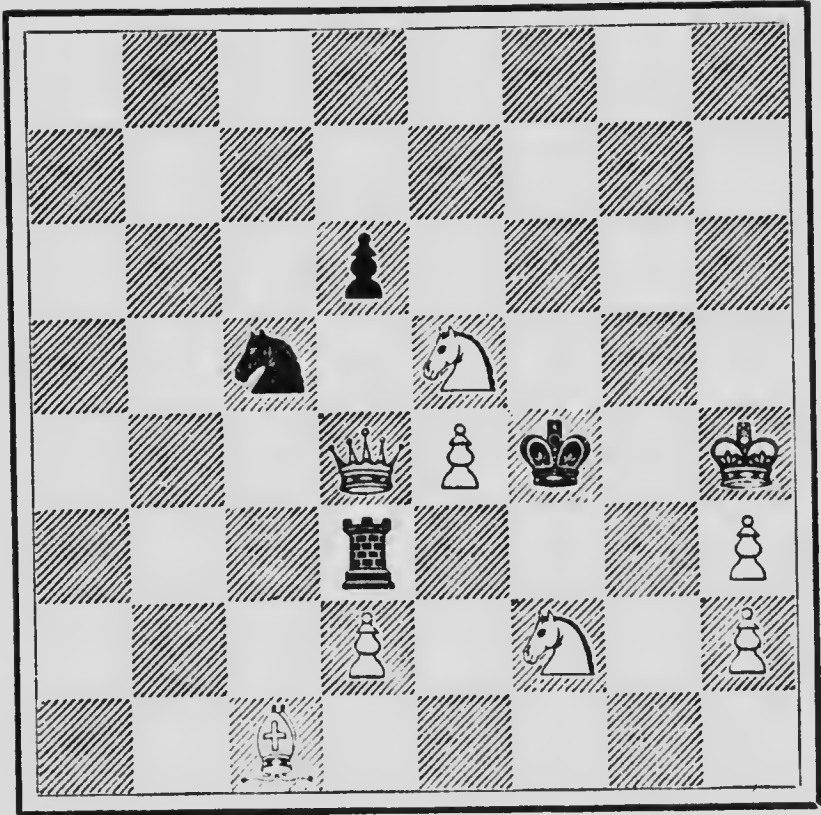


WHITE.

White to play and mate in two moves.

Problem No. 48.

BLACK.

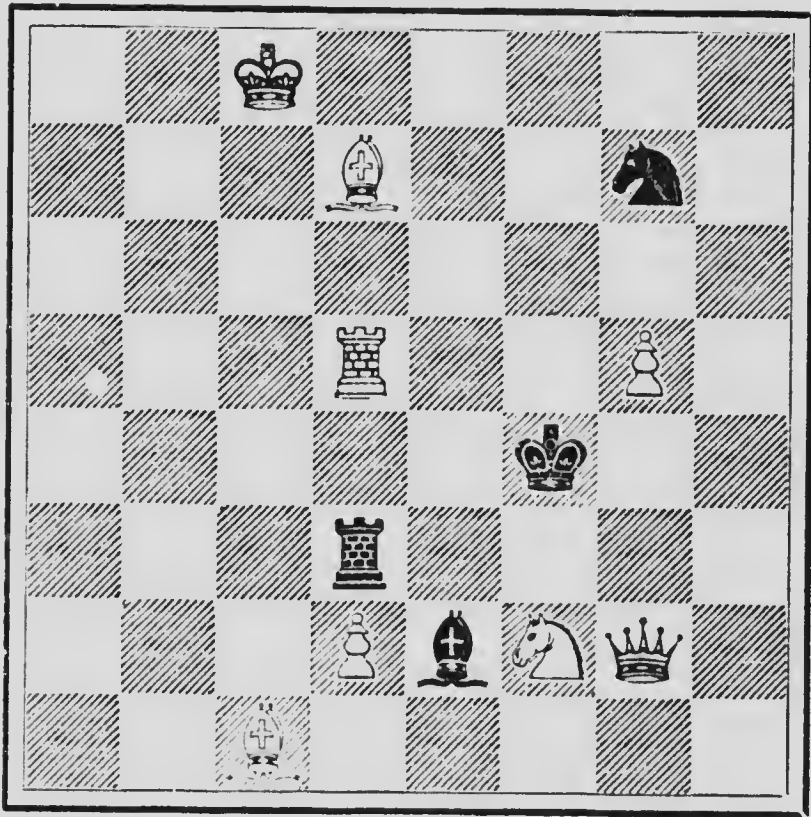


WHITE.

White to play and mate in two moves.

Problem No. 49.

BLACK.

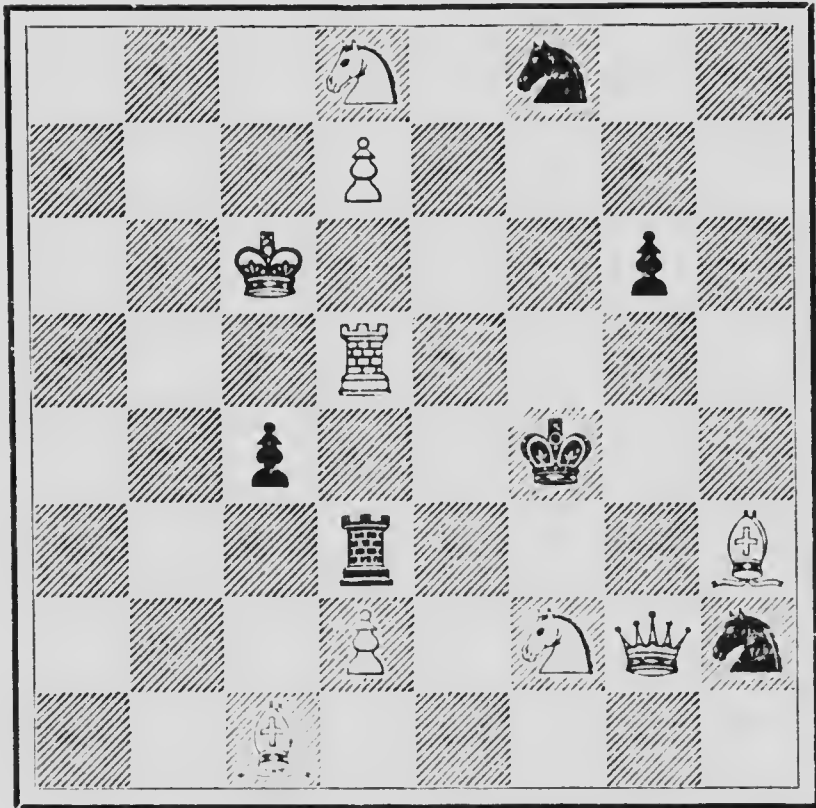


WHITE.

White to play and mate in two moves.

Problem No. 50.

BLACK.

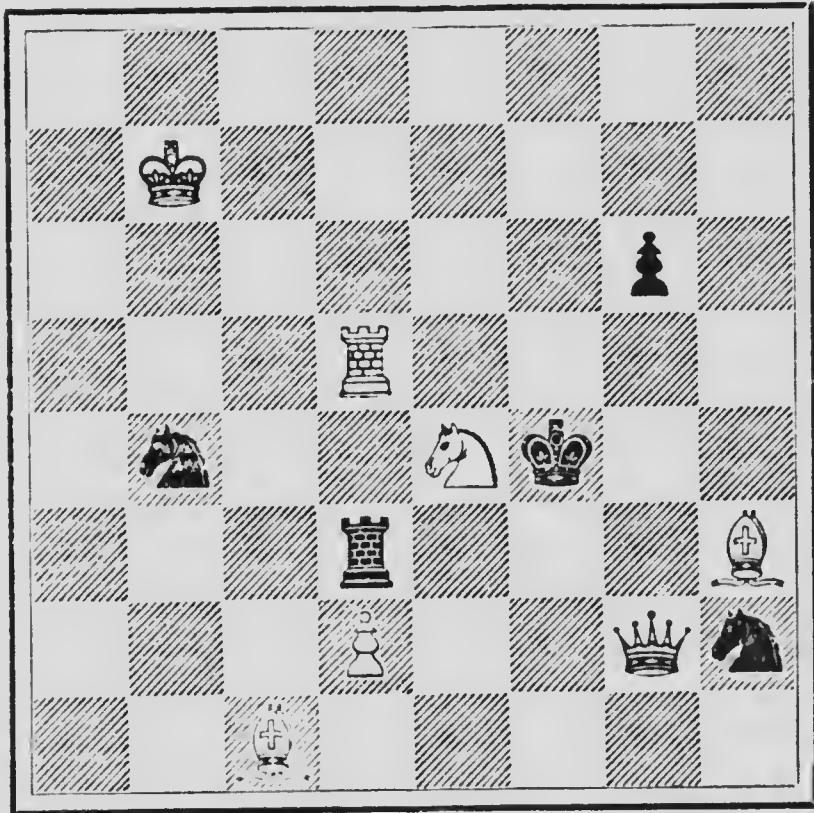


WHITE.

White to play and mate in two moves.

Problem No. 51.

BLACK.

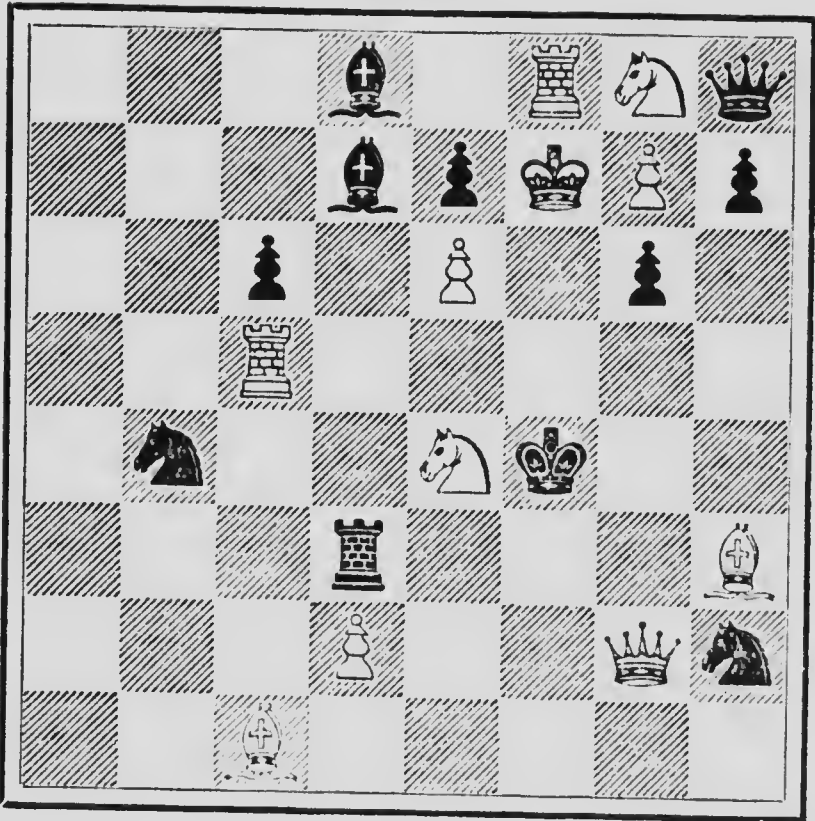


WHITE.

White to play and mate in two moves.

Problem No. 52.

BLACK.

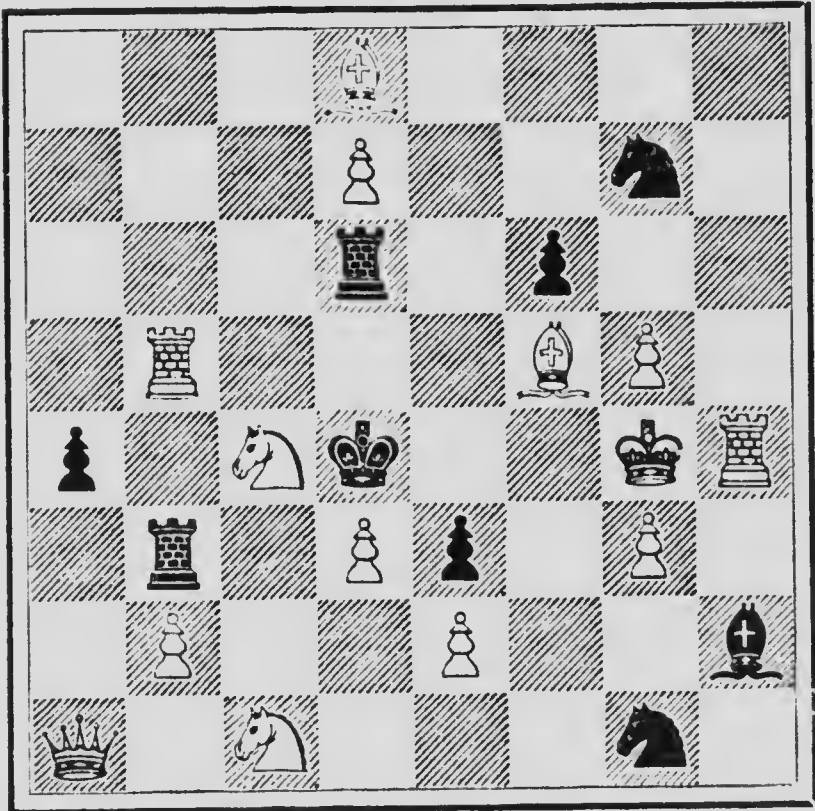


WHITE.

White to play and mate in two moves.

Problem No. 53.

BLACK.

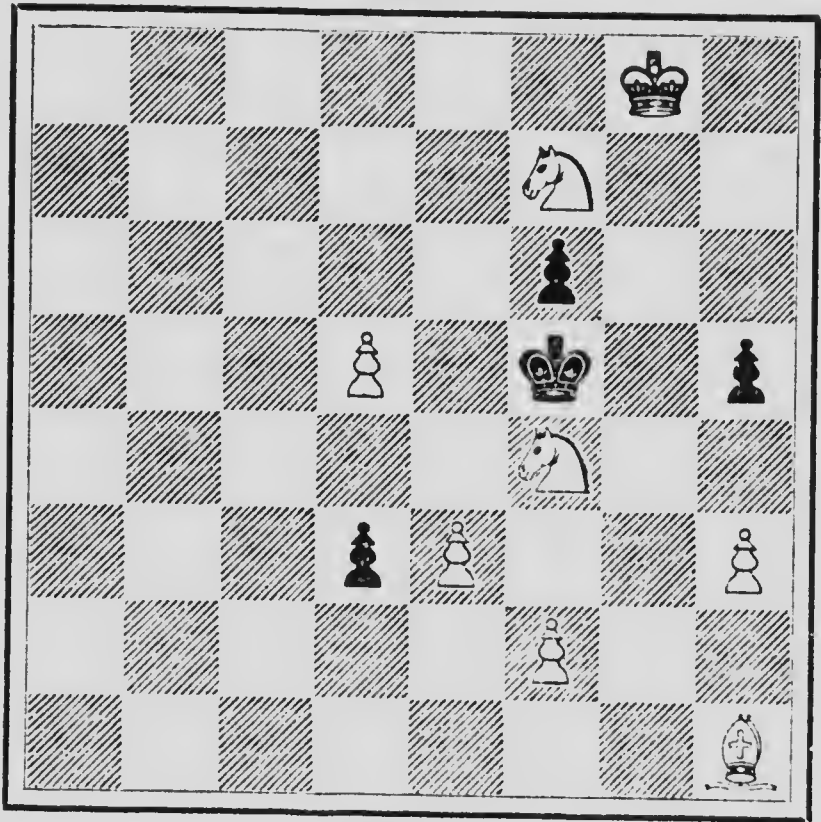


WHITE.

White to play and mate in two moves.

Problem No. 54.

BLACK.

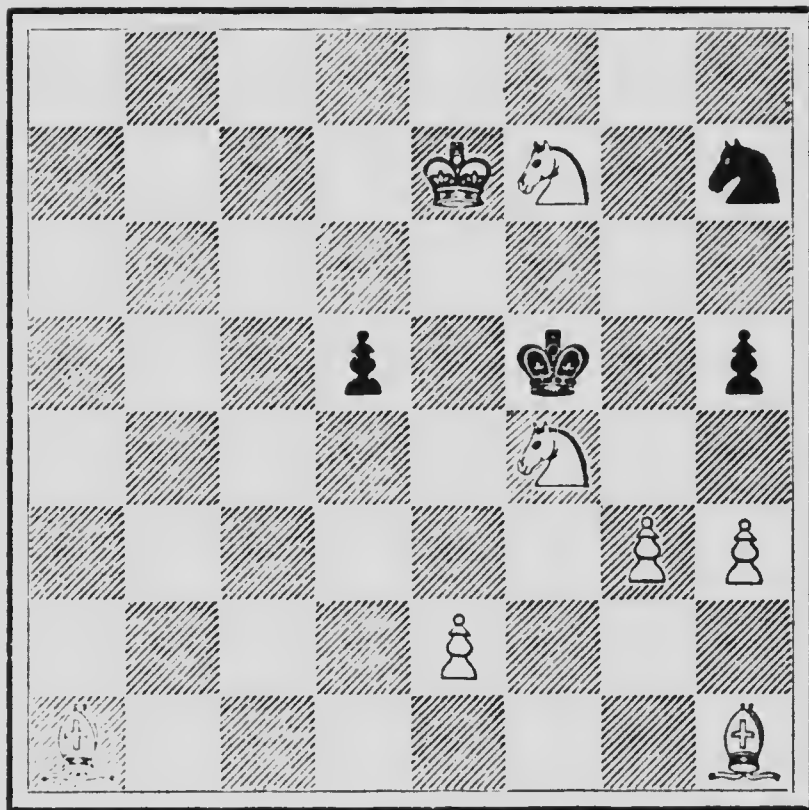


WHITE.

White to play and mate in two moves.

Problem No. 55.

BLACK.

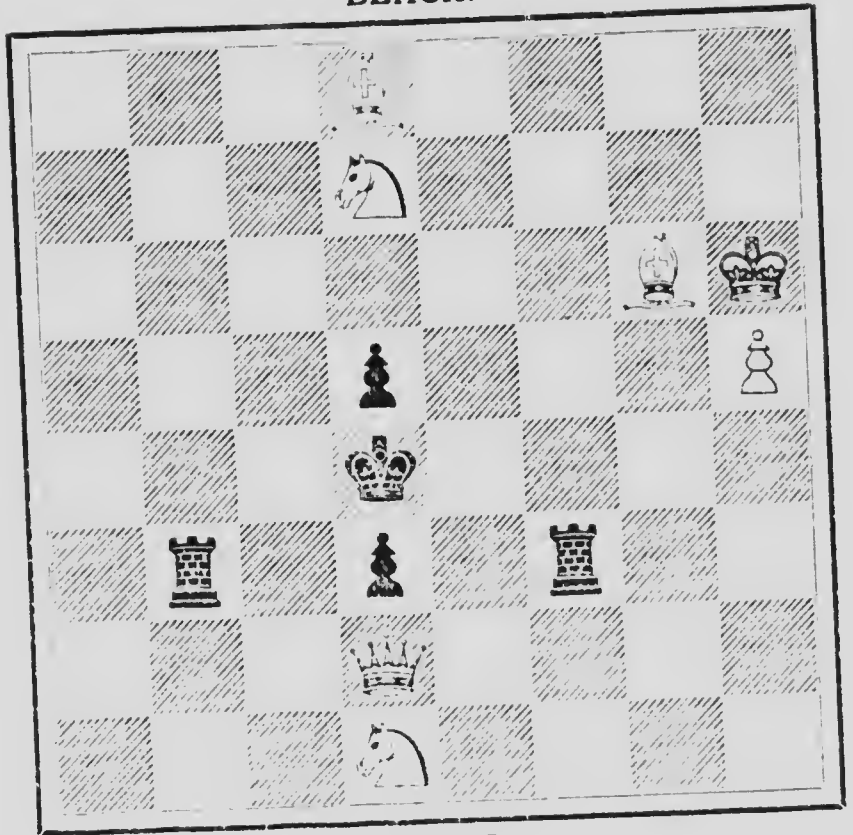


WHITE.

White to play and mate in two moves.

Problem No. 56.

BLACK.

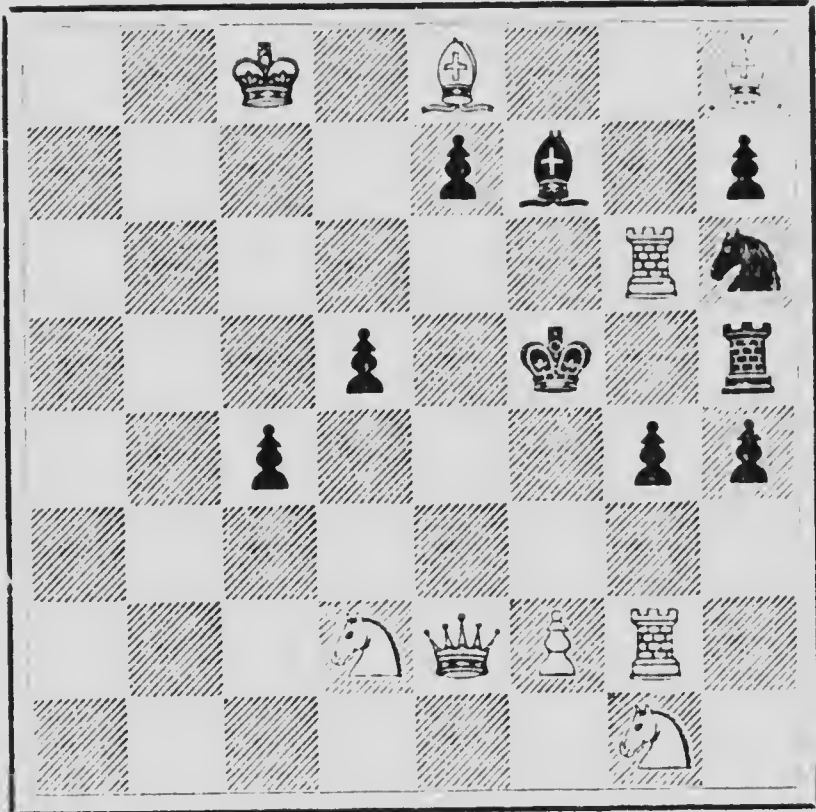


WHITE.

White to play and mate in two moves.

Problem No. 57.

BLACK.

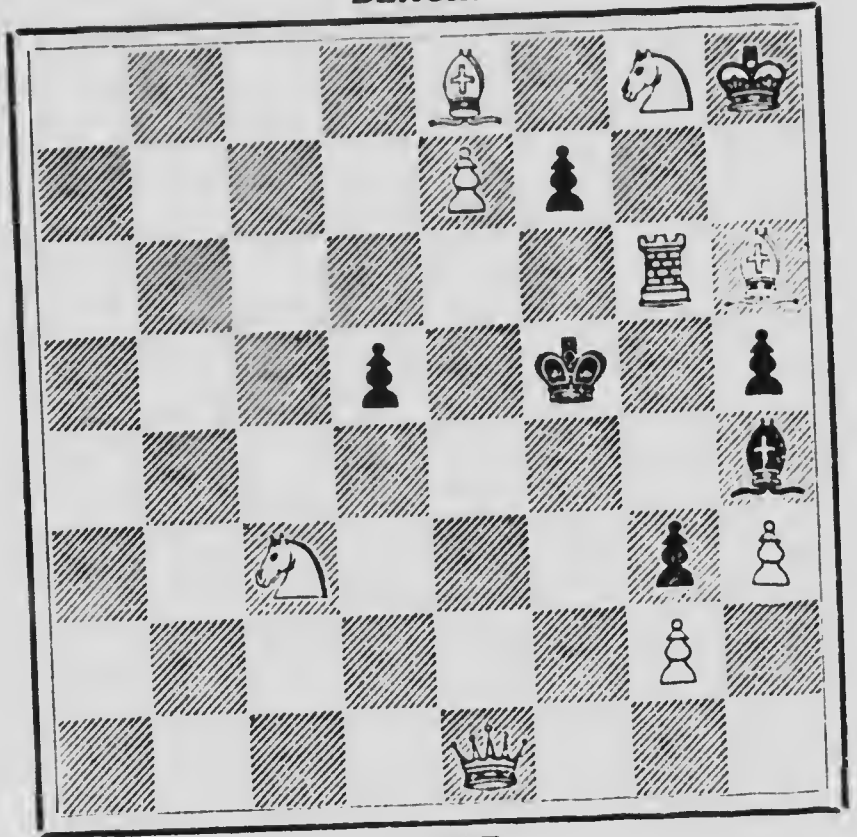


WHITE.

White to play and mate in two moves.

Problem No. 58.

BLACK.

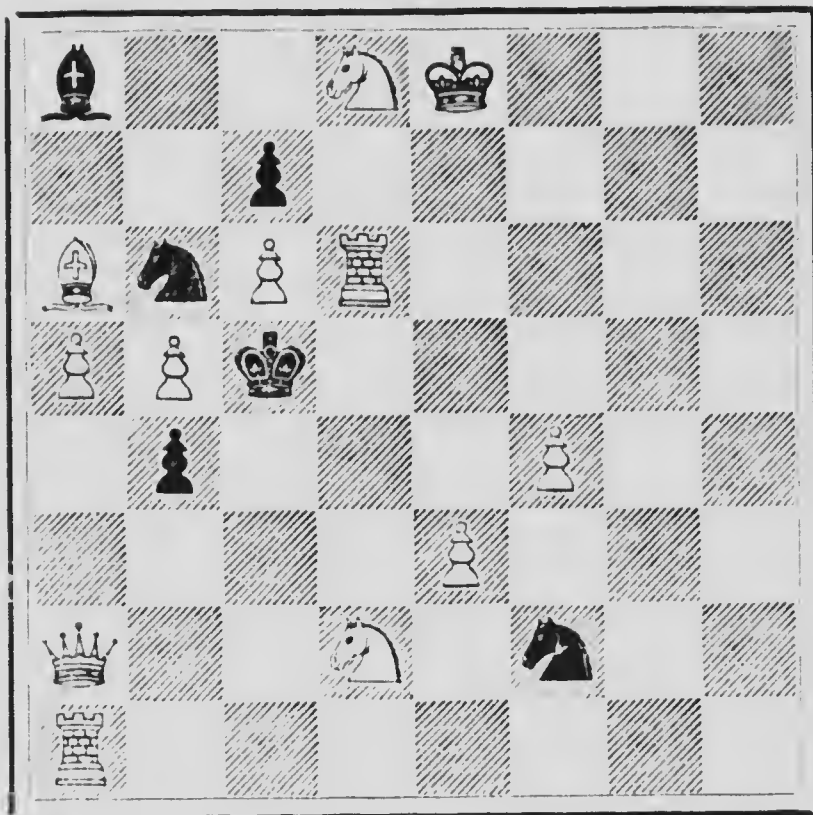


WHITE.

White to play and mate in two moves.

Problem No. 59.

BLACK.

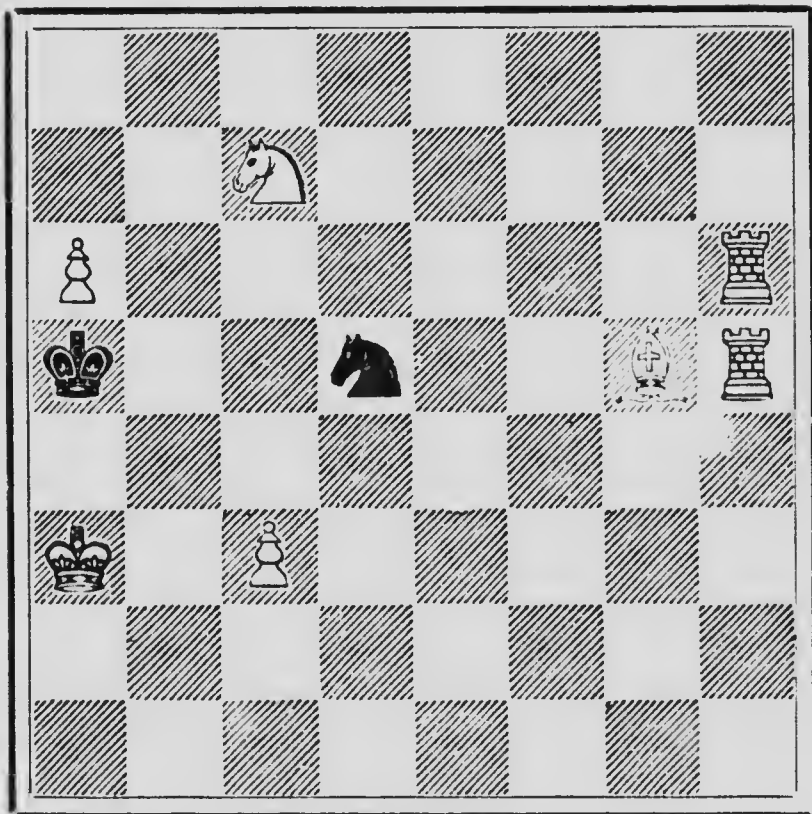


WHITE.

White to play and mate in two moves.

Problem No. 60.

BLACK.

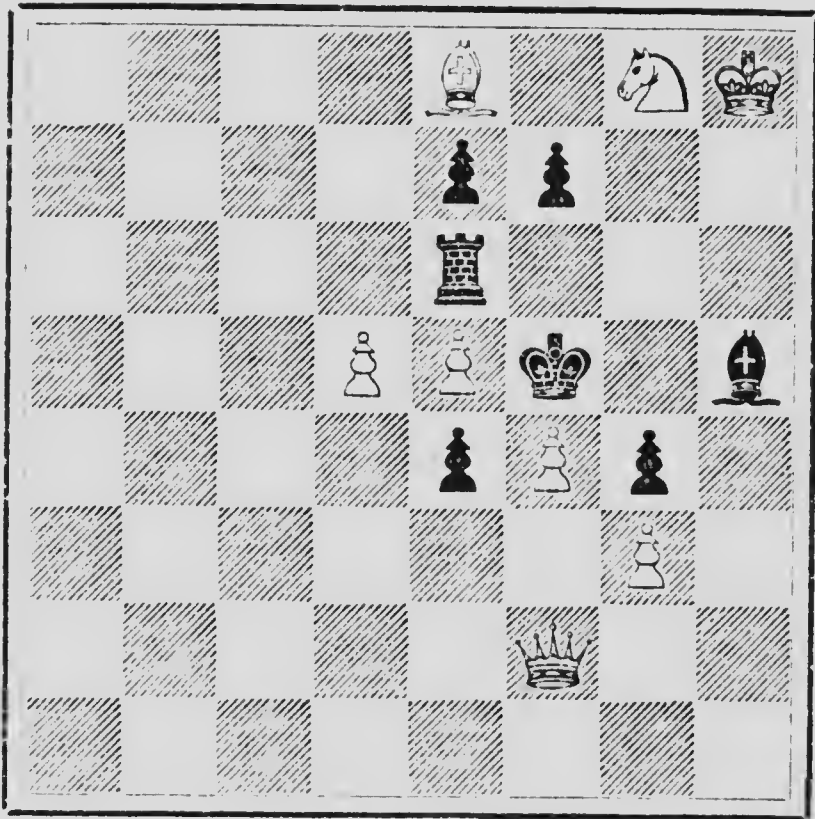


WHITE.

White to play and mate in two moves.

Problem No. 61.

BLACK.

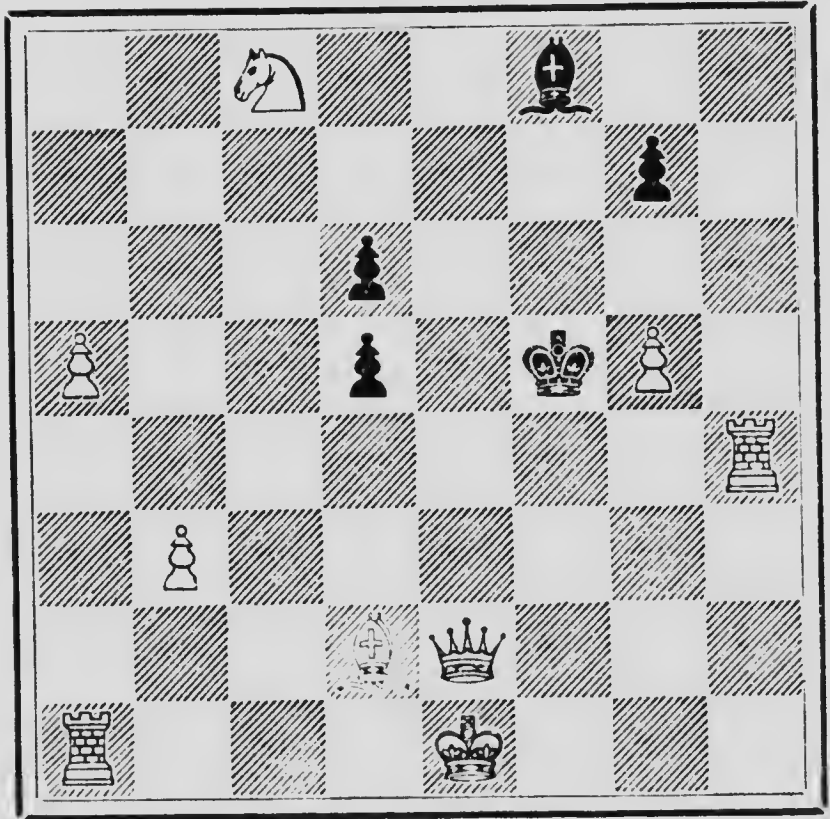


WHITE.

White to play and mate in two moves.

Problem No. 62.

BLACK.

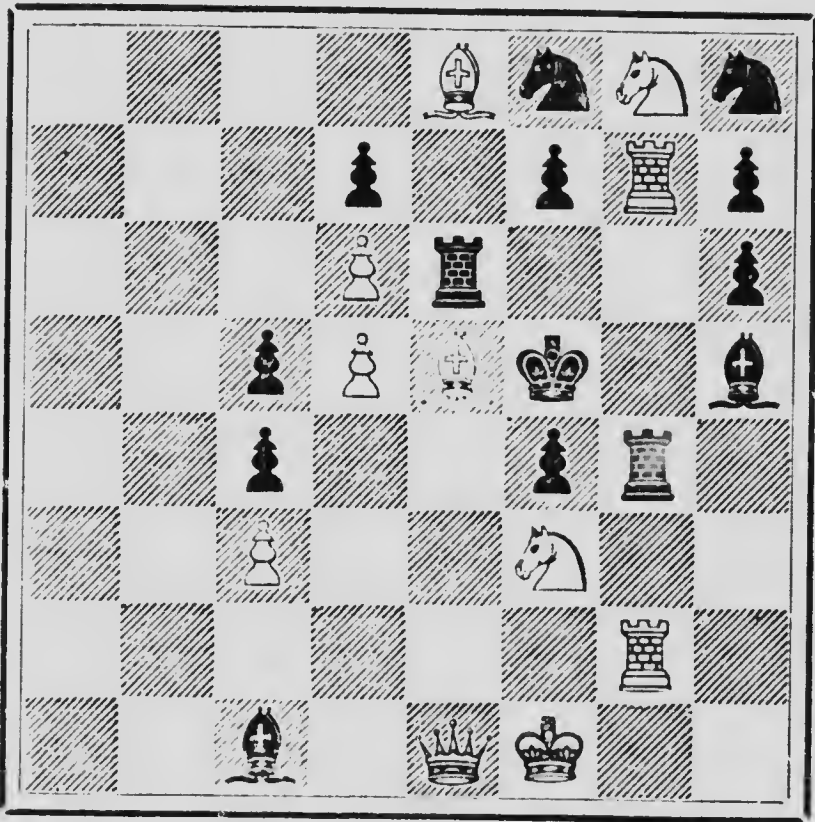


WHITE.

White to play and mate in two moves.

Problem No. 63.

BLACK.

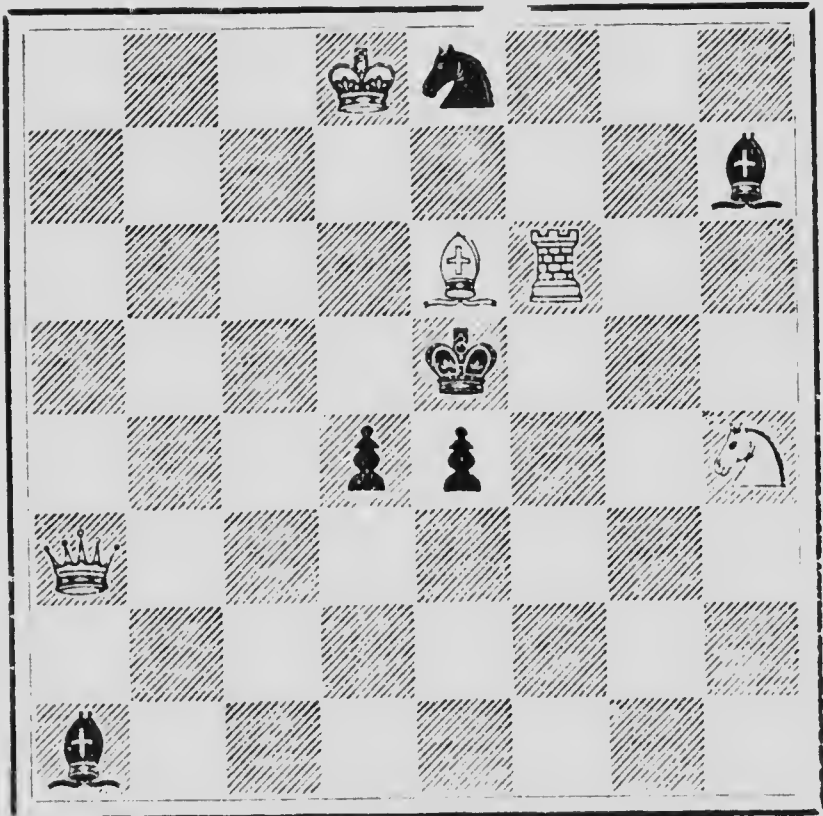


WHITE.

White to play and mate in two moves.

Problem No. 64.

BLACK.

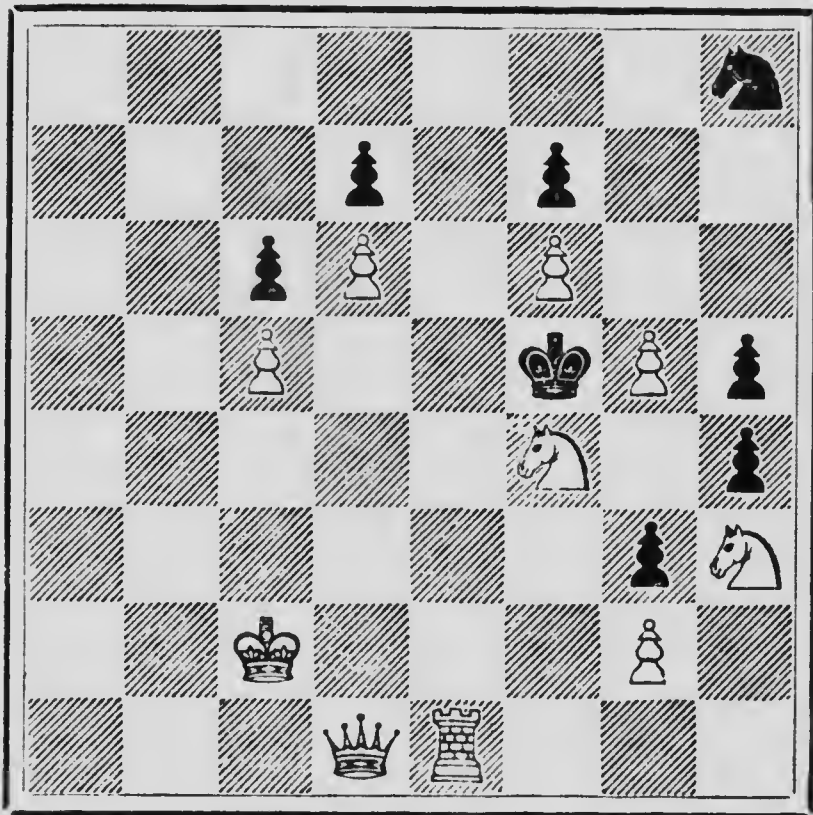


WHITE.

White to play and mate in two moves.

Problem No. 65.

BLACK.

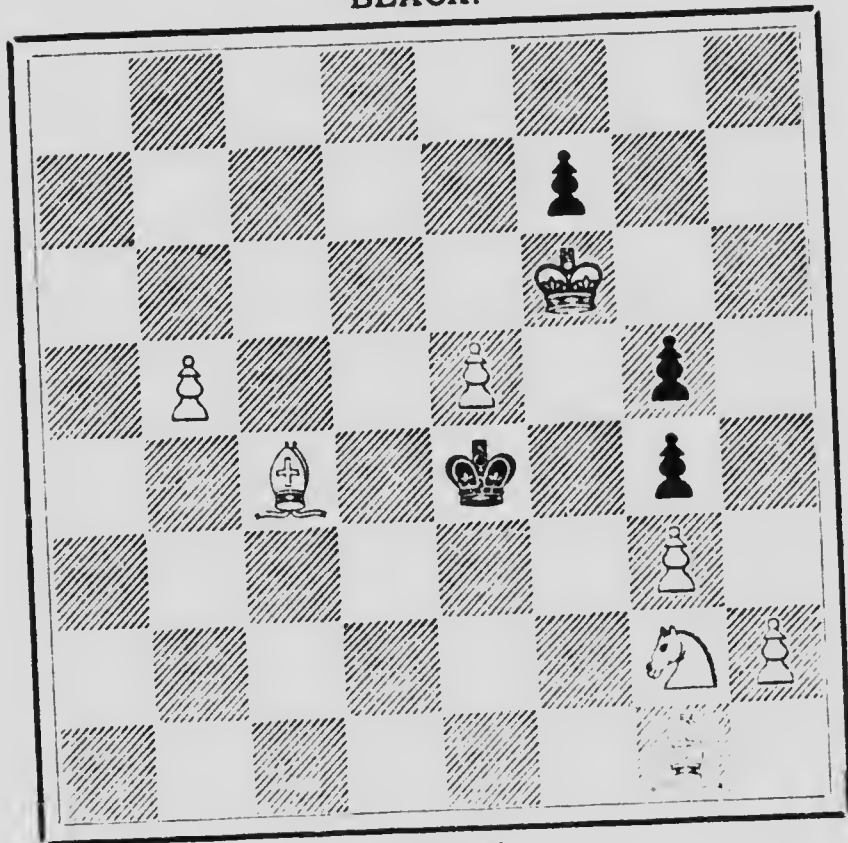


WHITE.

White to play and mate in two moves.

Problem No. 66.

BLACK.

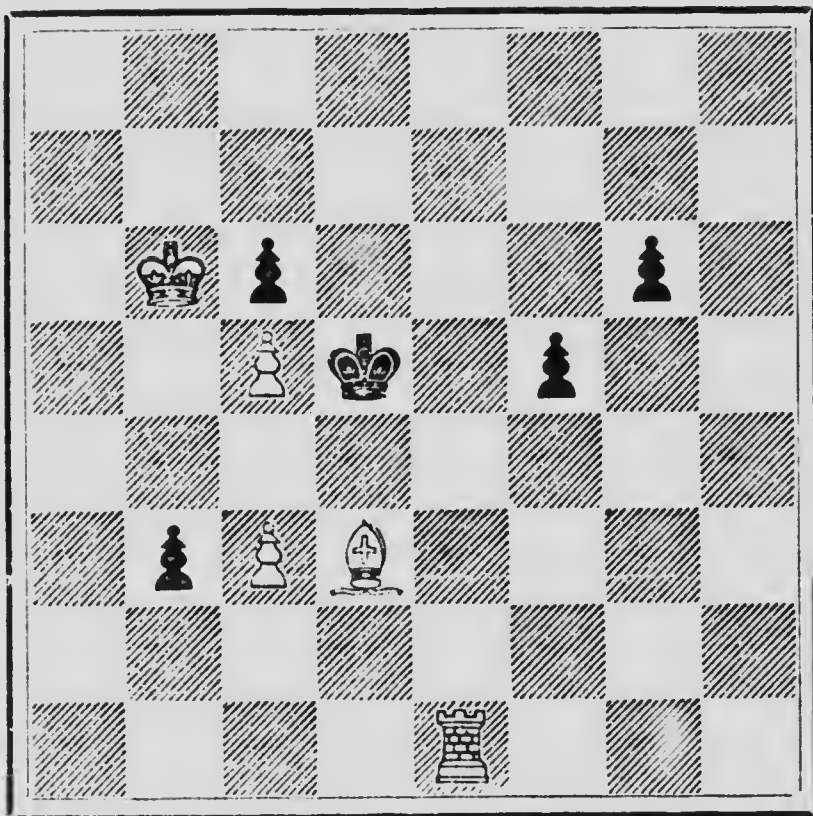


WHITE.

White to play and mate in three moves.

Problem No. 67.

BLACK.

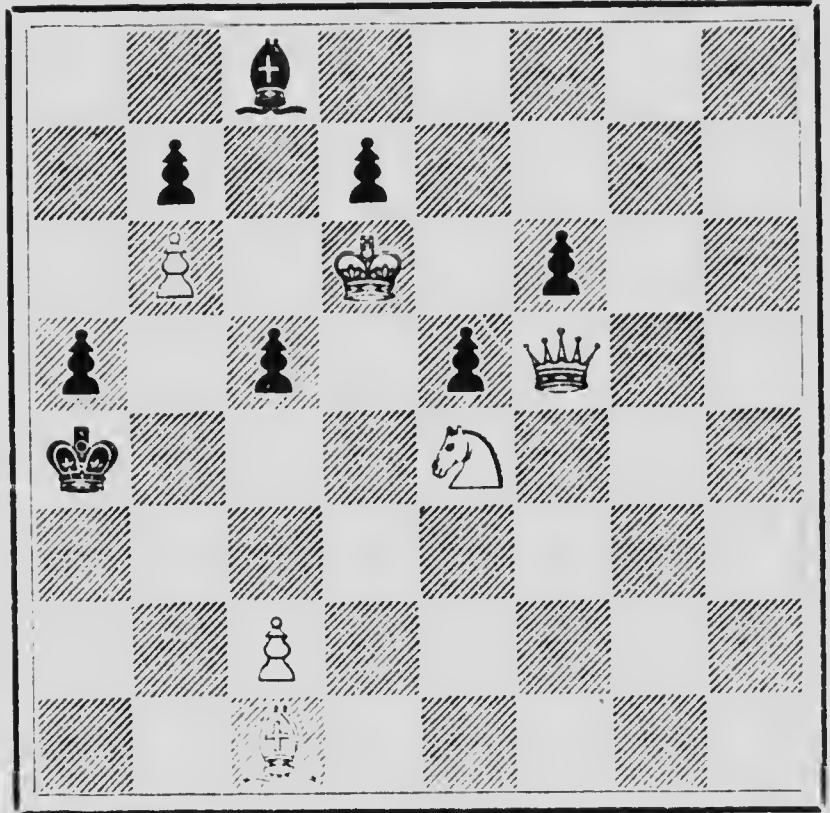


WHITE.

White to play and mate in three moves.

Problem No. 68.

BLACK.

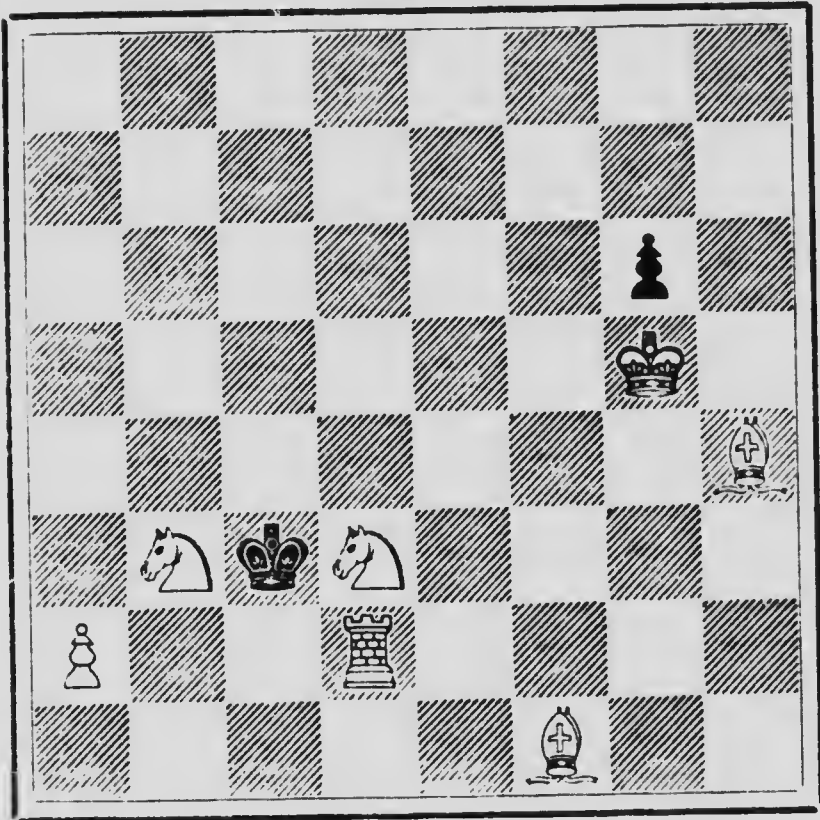


WHITE.

White to play and mate in three moves.

Problem No. 69.

BLACK.

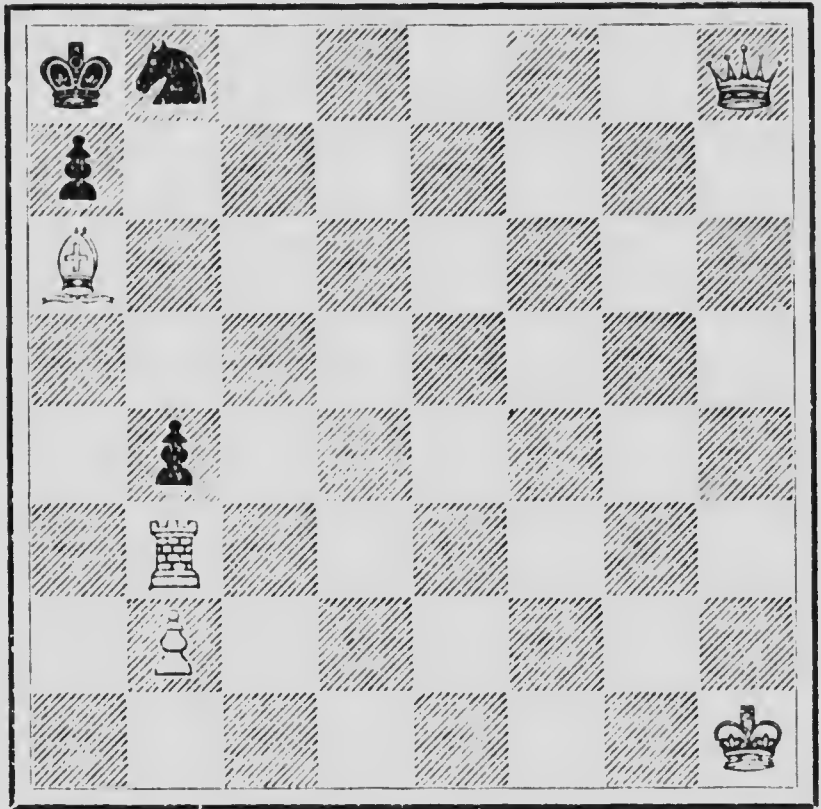


WHITE.

White to play and mate in three moves.

Problem No. 70.

BLACK.

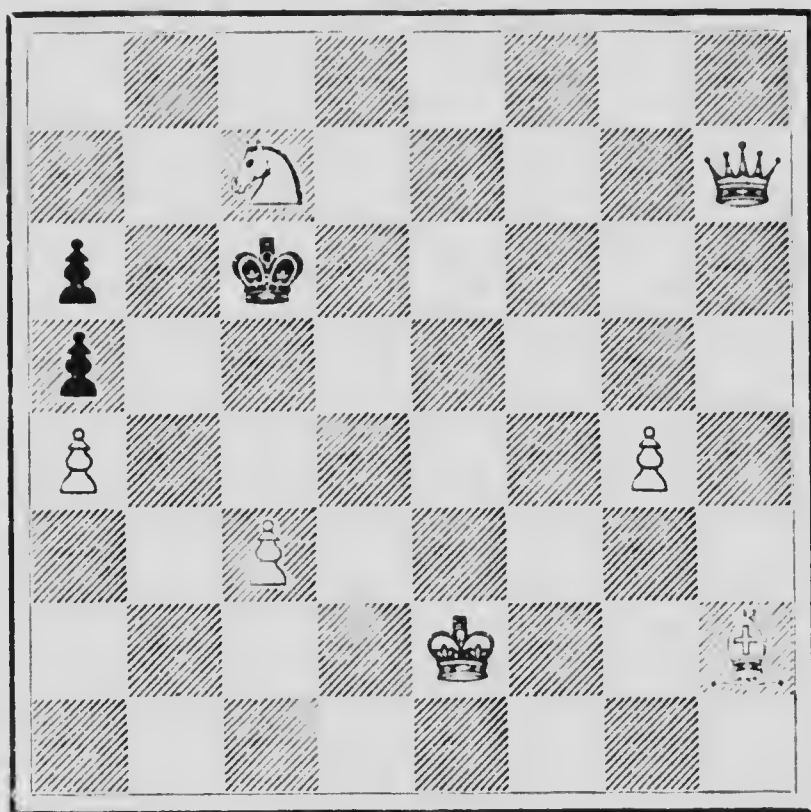


WHITE.

White to play and mate in three moves.

Problem No. 71.

BLACK.

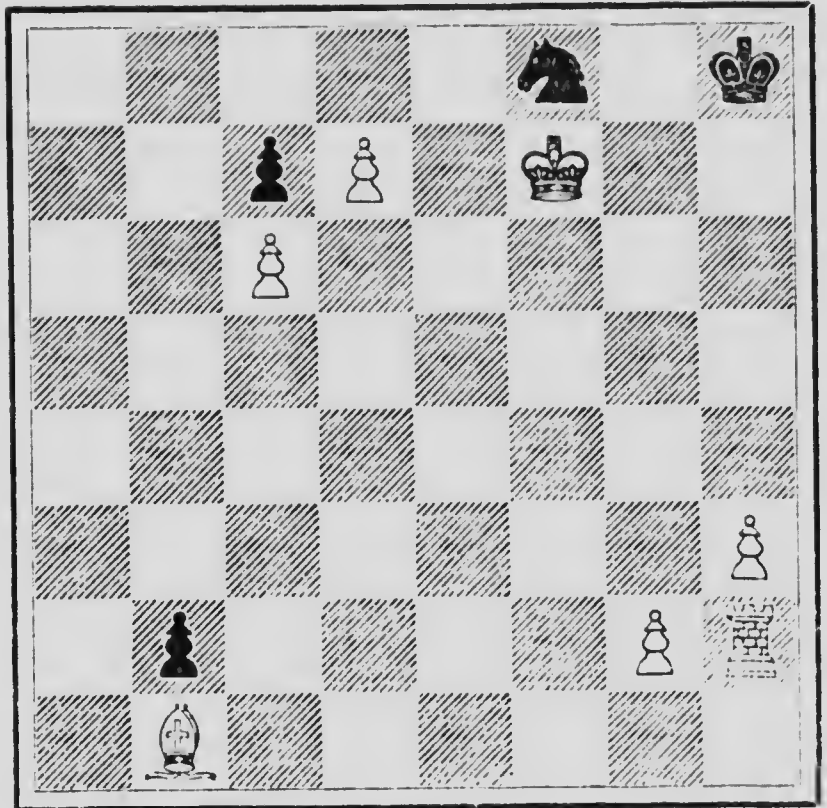


WHITE.

White to play and mate in three moves.

Problem No. 72.

BLACK.

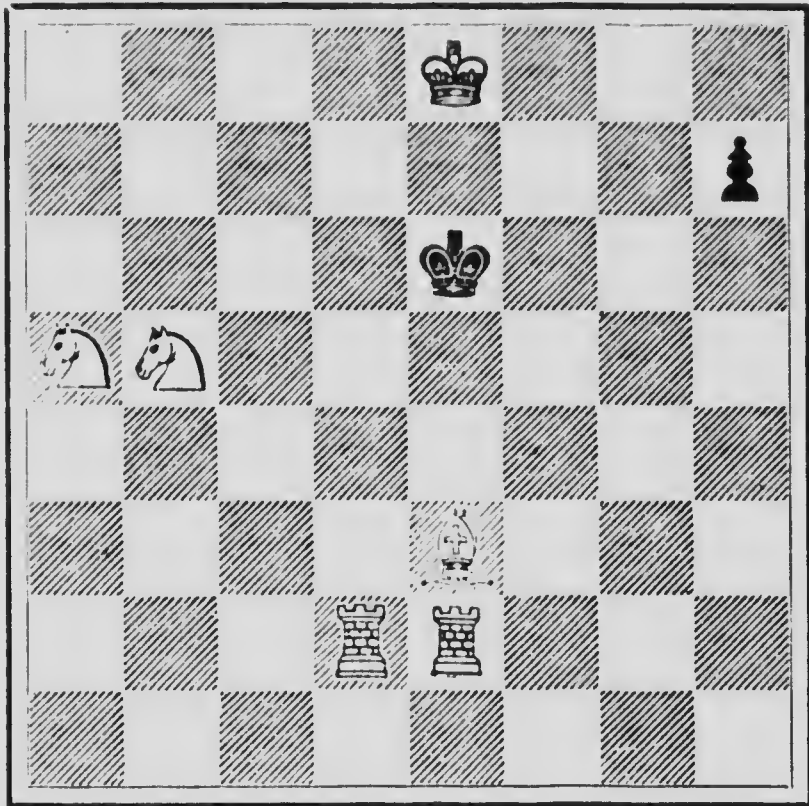


WHITE.

White to play and mate in three moves.

Problem No. 73.

BLACK.

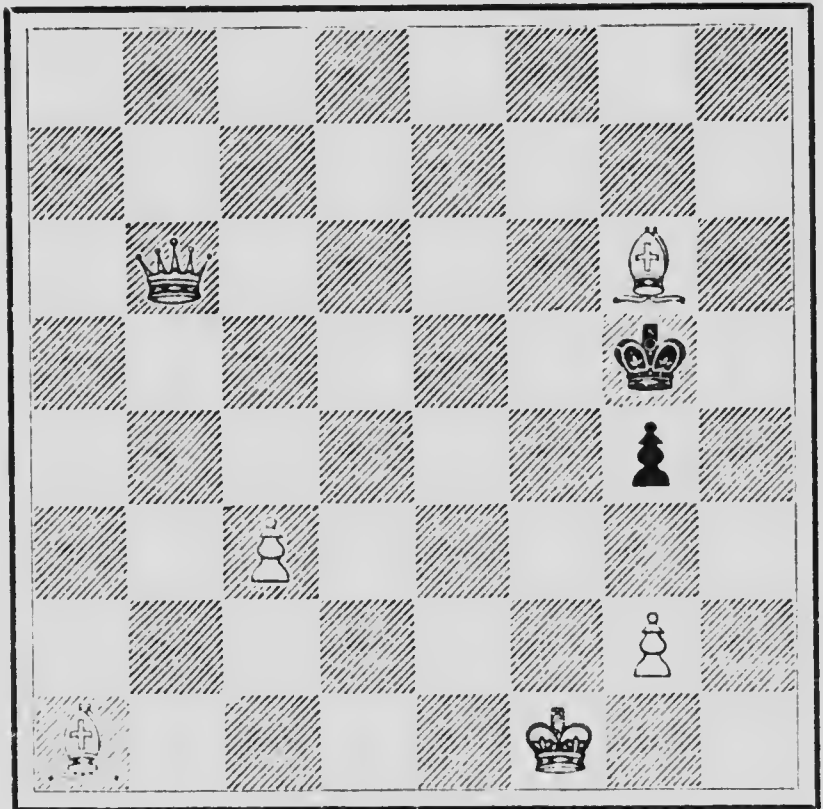


WHITE.

White to play and mate in three moves.

Problem No. 74.

BLACK.

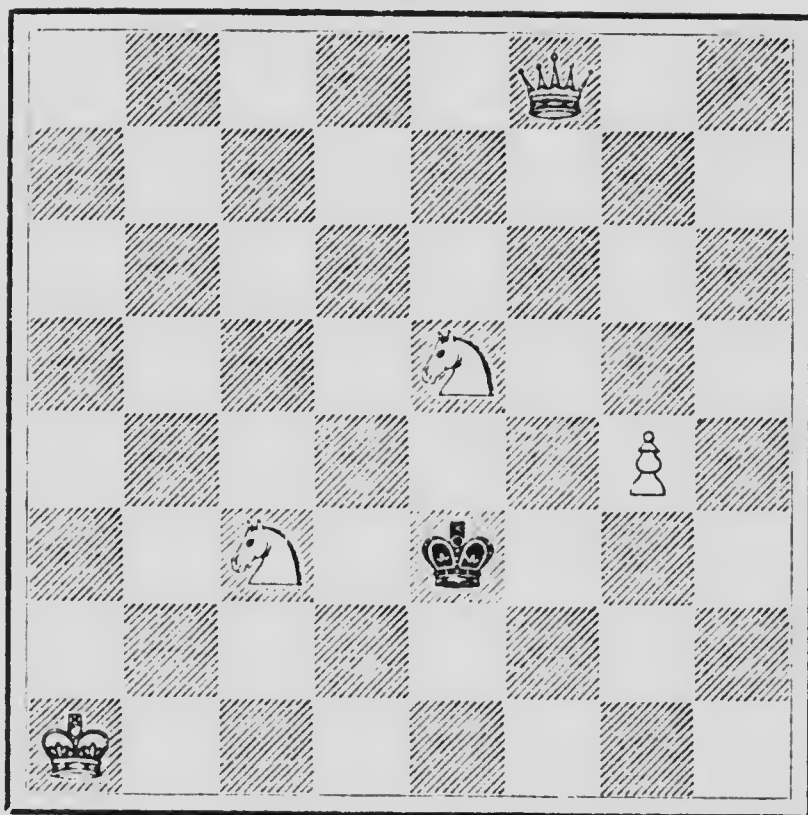


WHITE.

White to play and mate in three moves.

Problem No. 75.

BLACK.

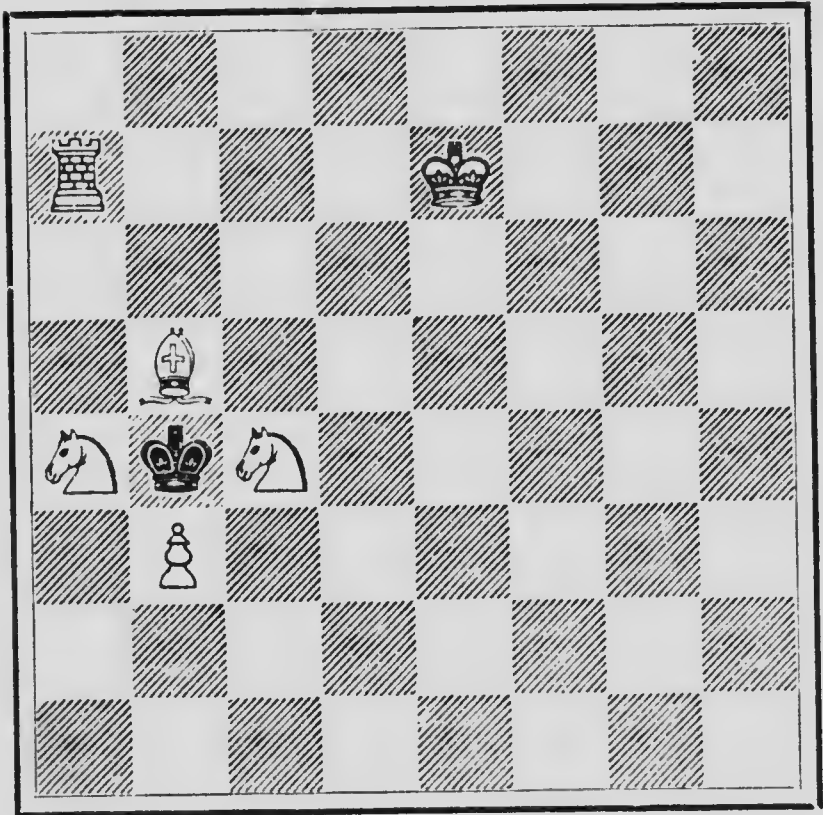


WHITE.

White to play and mate in three moves.

Problem No. 76.

BLACK.

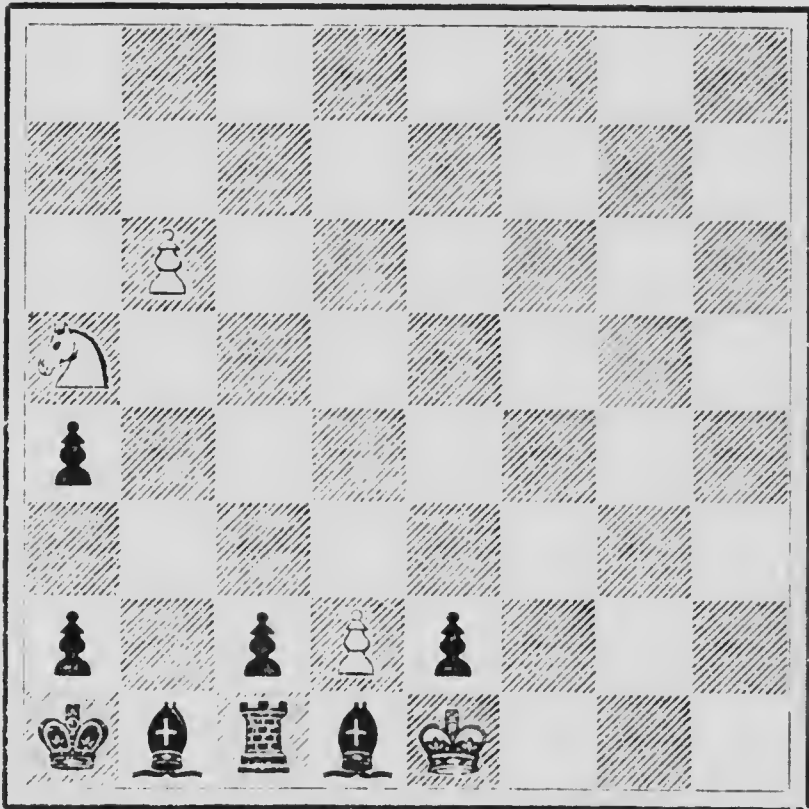


WHITE.

White to play and mate in three moves.

Problem No. 77.

BLACK.

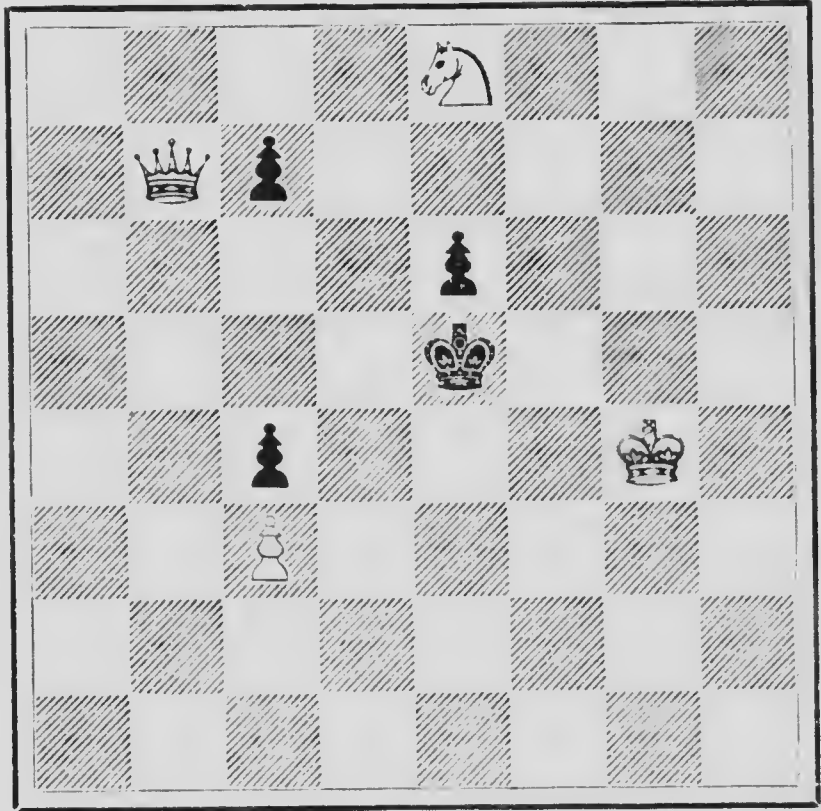


WHITE.

White to play and mate in three moves.

Problem No. 78.

BLACK.

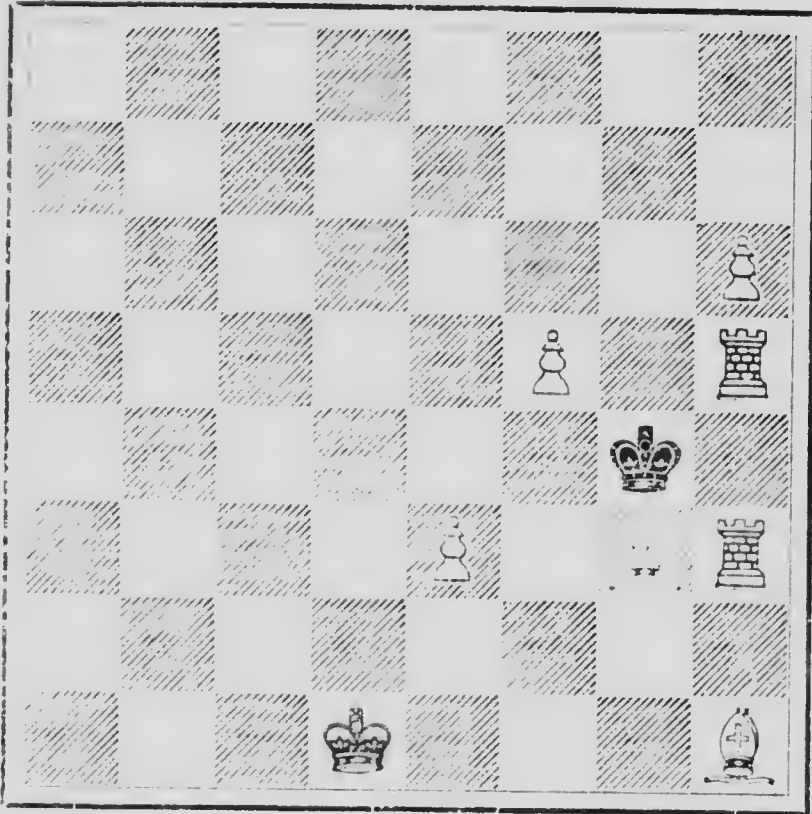


WHITE.

White to play and mate in three moves.

Problem No. 79.

BLACK.

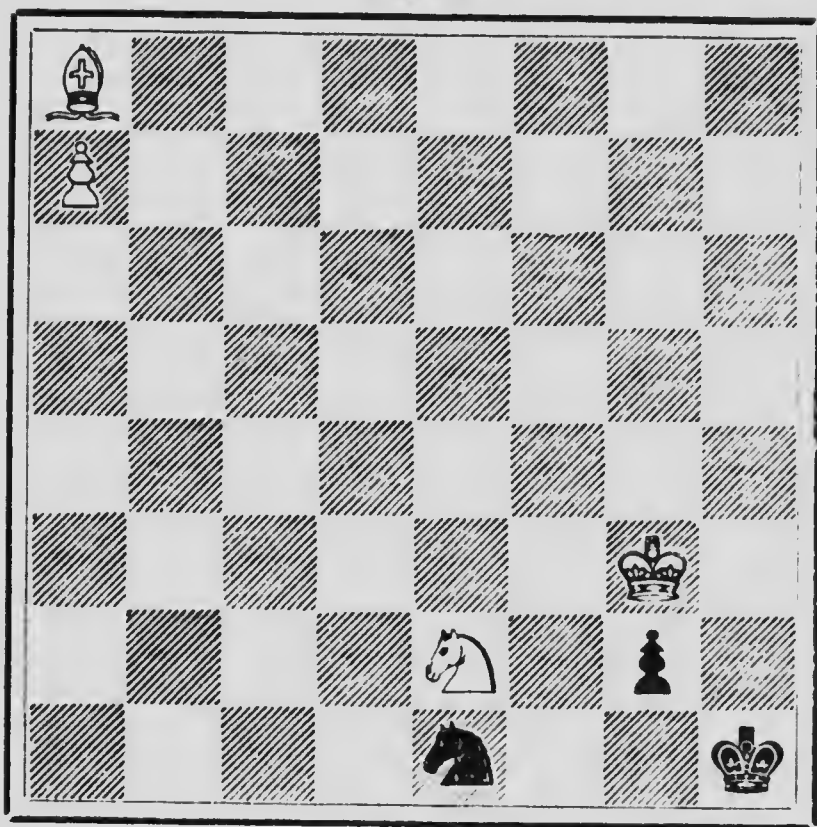


WHITE.

White to play and mate in three moves.

Problem No. 80.

BLACK.

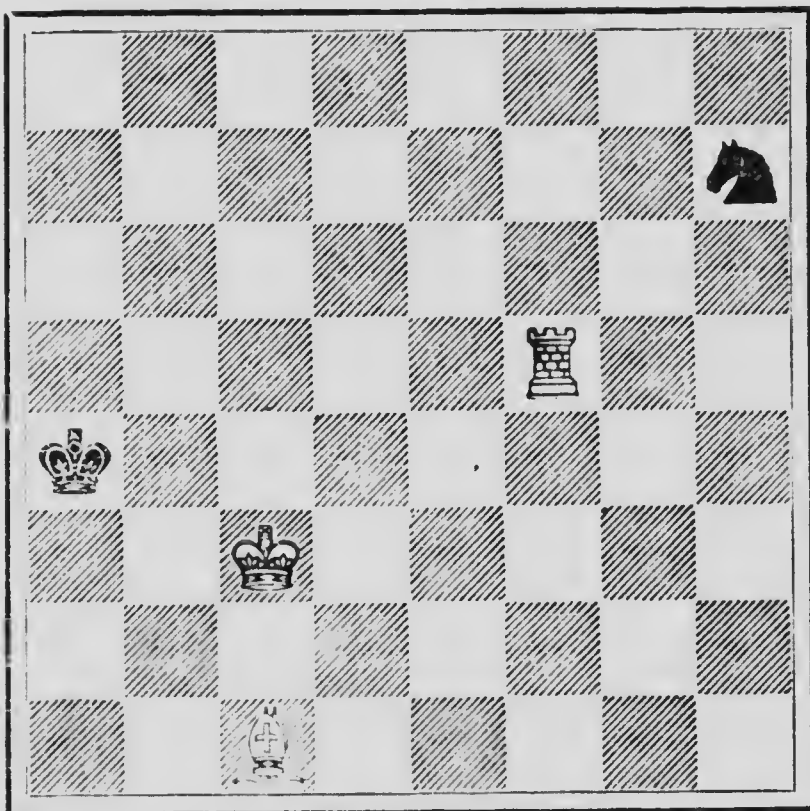


WHITE.

White to play and mate in three moves.

Problem No. 81.

BLACK.

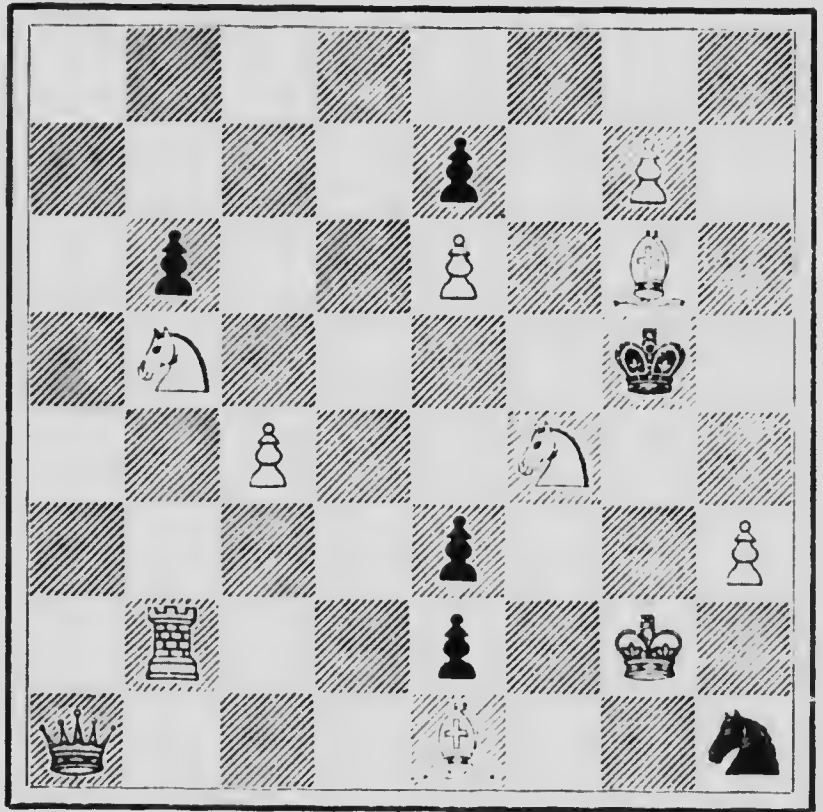


WHITE.

White to play and mate in three moves.

Problem No. 82.

BLACK.

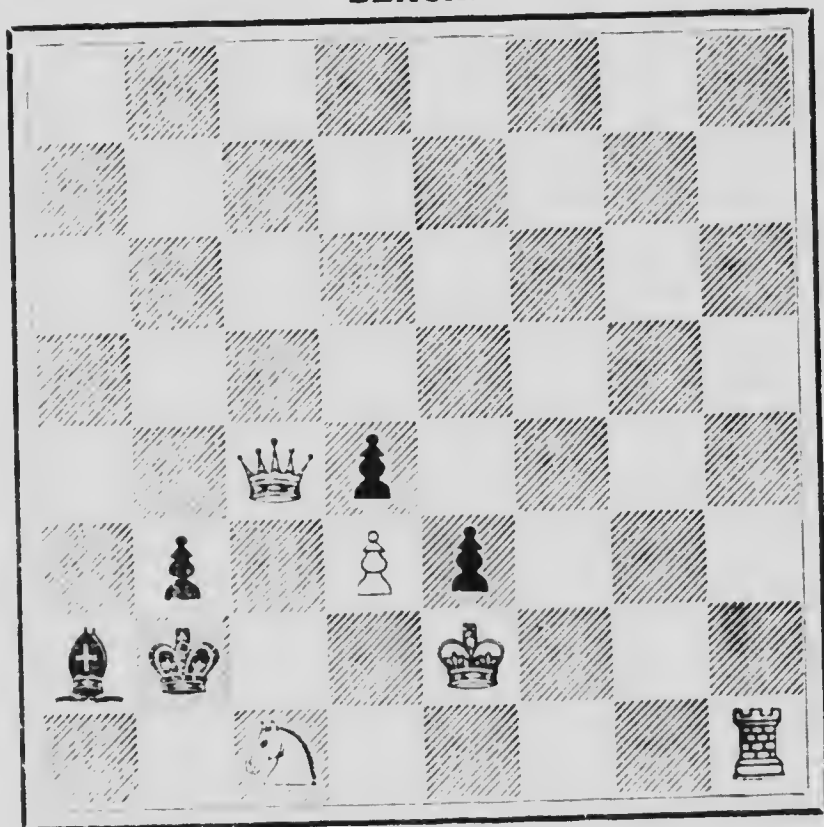


WHITE.

White to play and mate in three moves.

Problem No. 83.

BLACK.

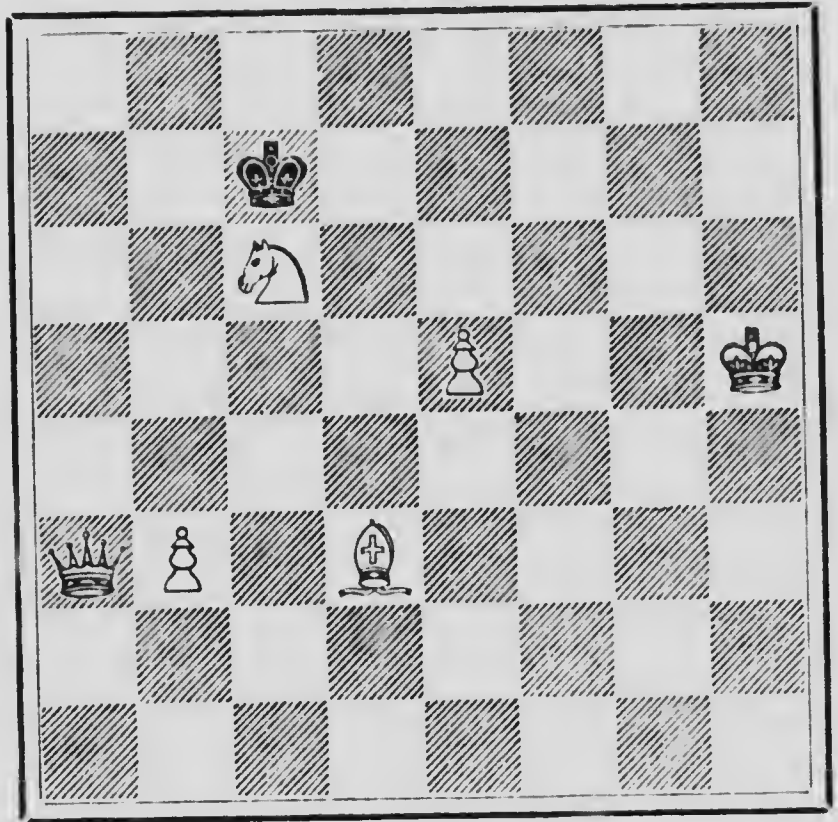


WHITE.

White to play and mate in three moves.

Problem No. 84.

BLACK.

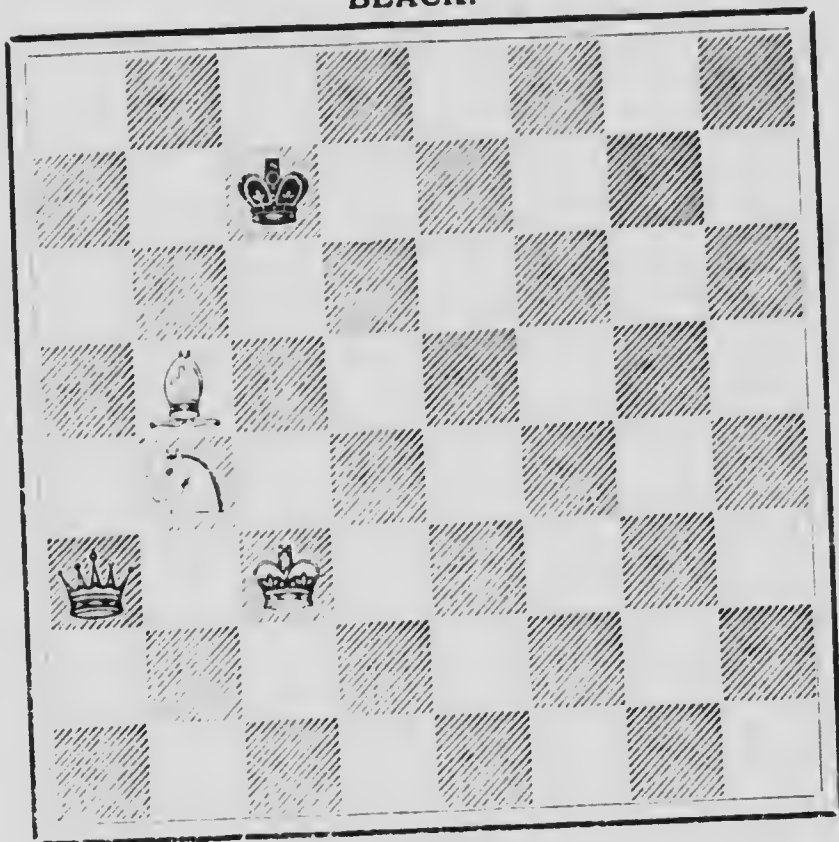


WHITE.

White to play and mate in three moves.

Problem No. 85.

BLACK.



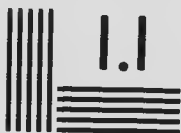
WHITE.

White to play and mate in three moves.



MICROCOPY RESOLUTION TEST CHART

ANSI and ISO TEST CHART No. 2

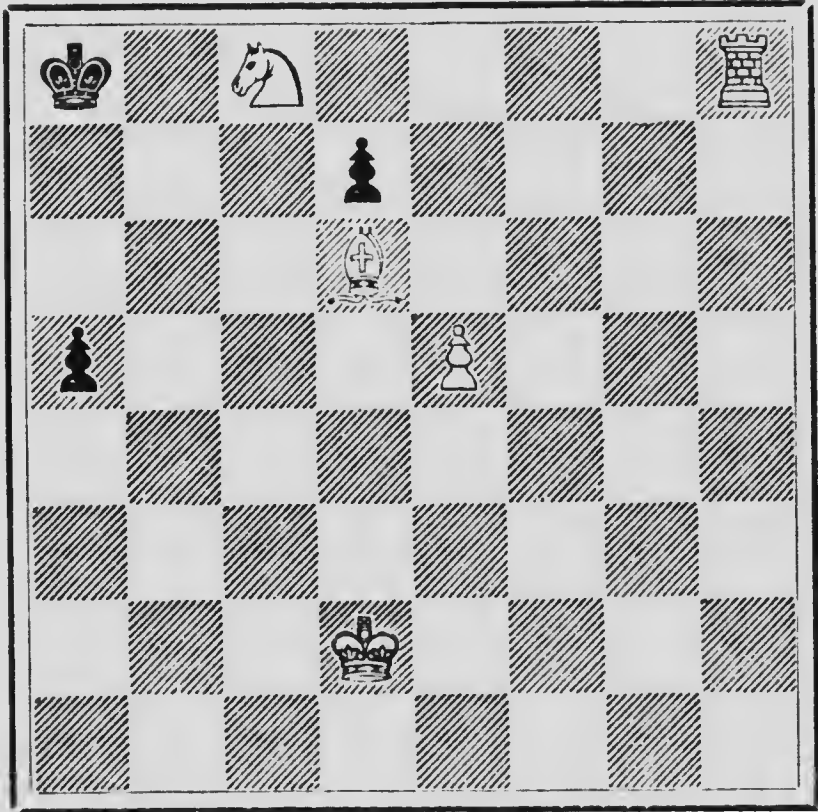


APPLIED IMAGE Inc

200 North Main Street
Rutherford, New Jersey 07070
Tel: 201-981-5000
Fax: 201-981-5001

Problem No. 86.

BLACK.

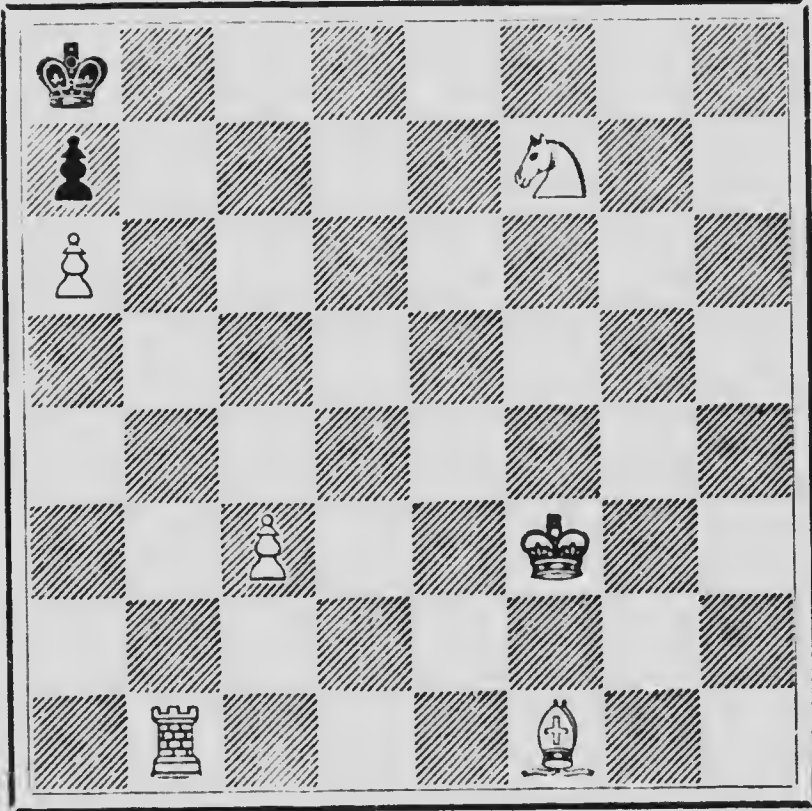


WHITE.

White to play and mate in three moves.

Problem No. 87.

BLACK.

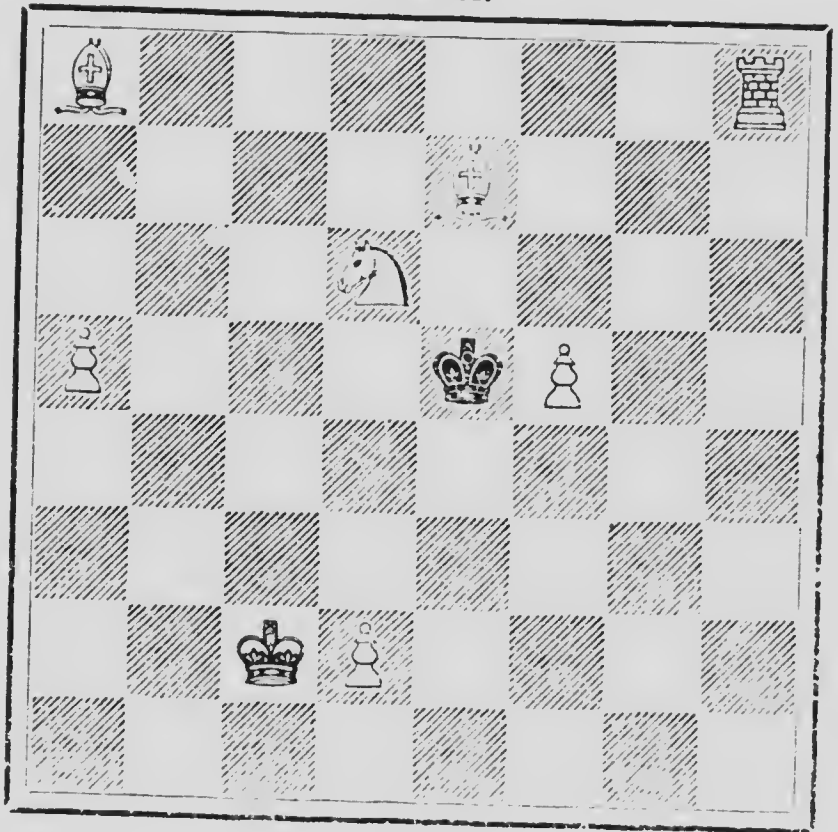


WHITE.

White to play and mate in three moves.

Problem No. 88.

BLACK.

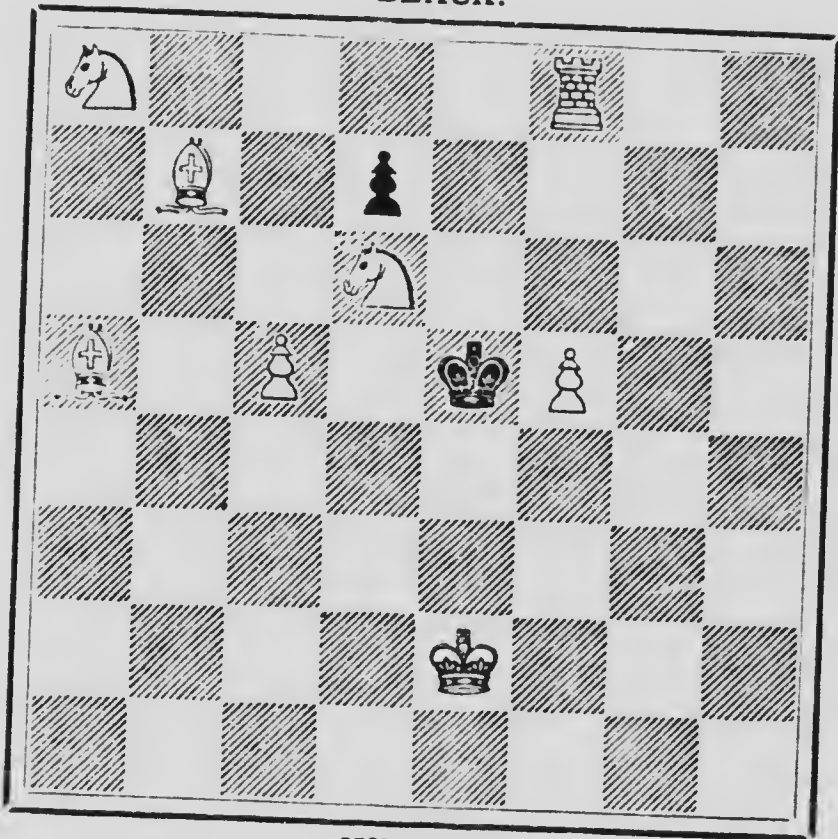


WHITE.

White to play and mate in three moves.

Problem No. 89.

BLACK.

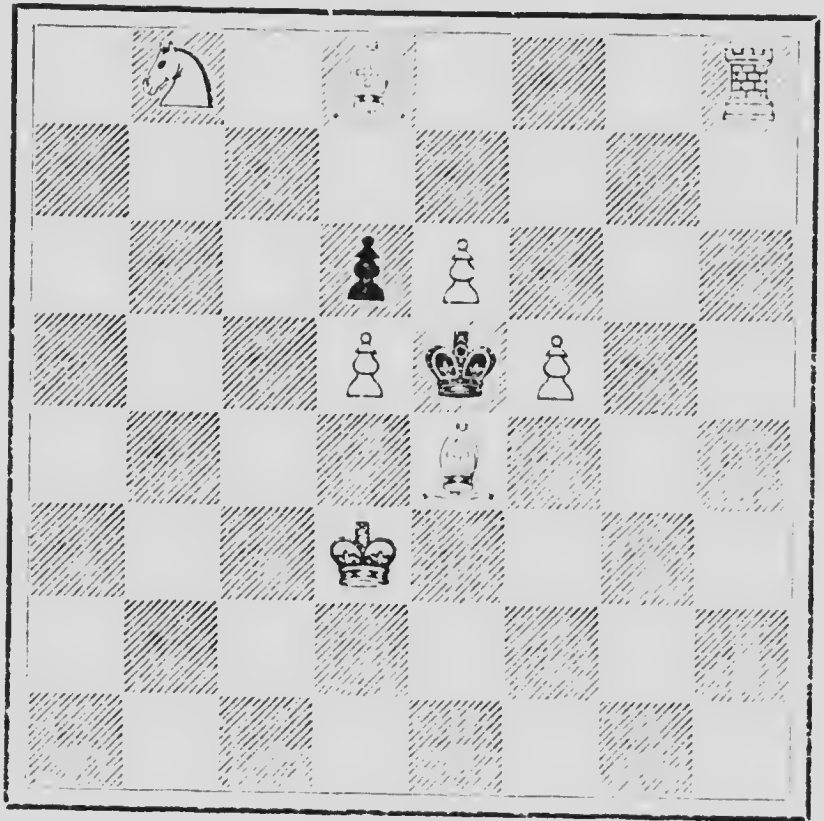


WHITE.

White to play and mate in three moves.

Problem No. 90.

BLACK.

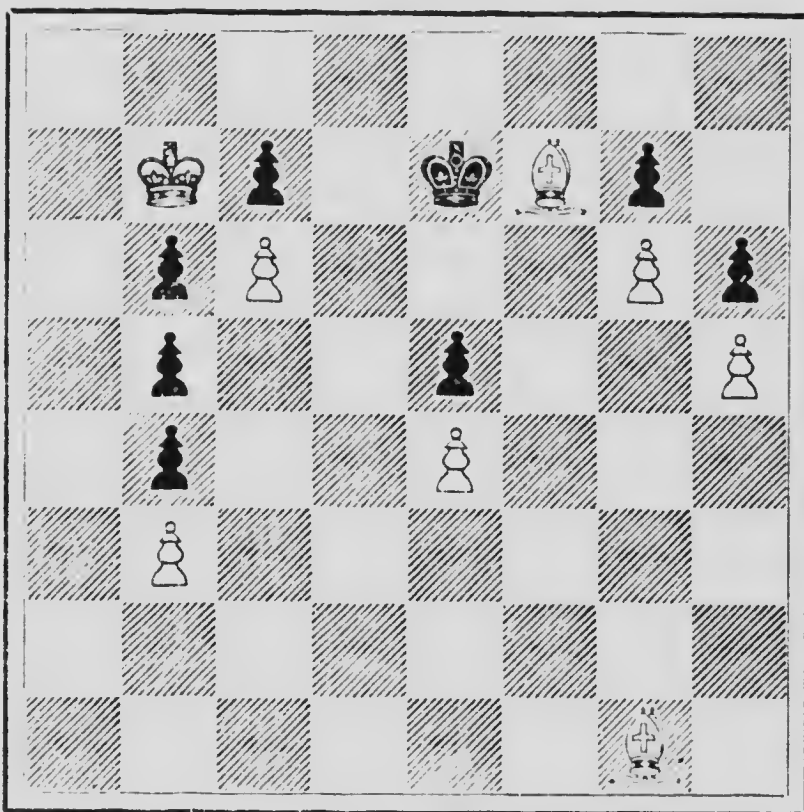


WHITE.

White to play and mate in three moves.

Problem No. 91.

BLACK.

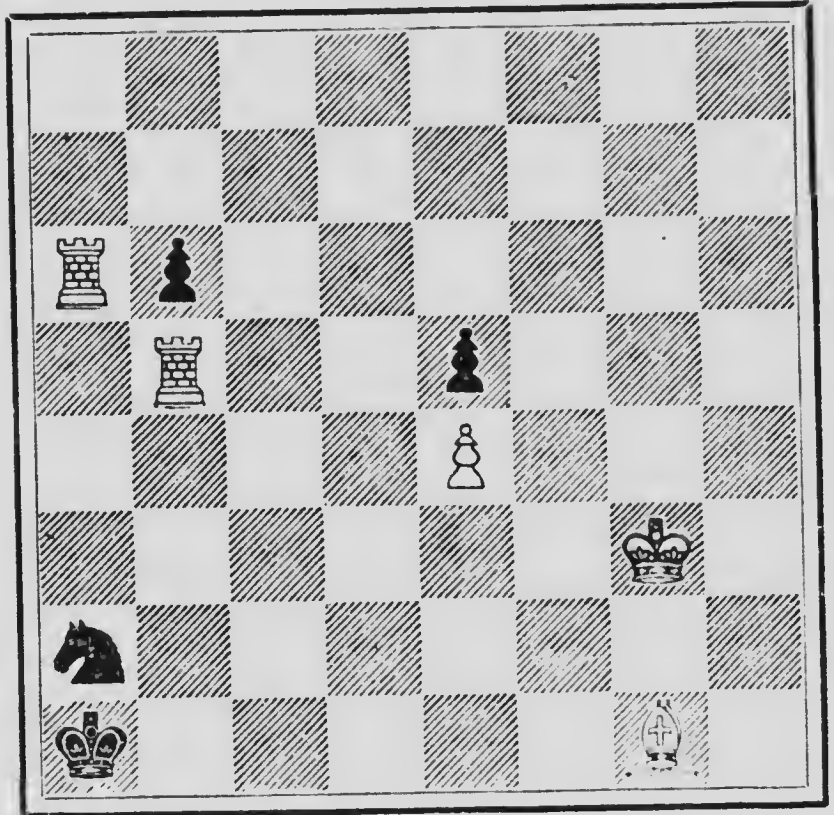


WHITE.

White to play and mate in four moves.

Problem No. 92.

BLACK.

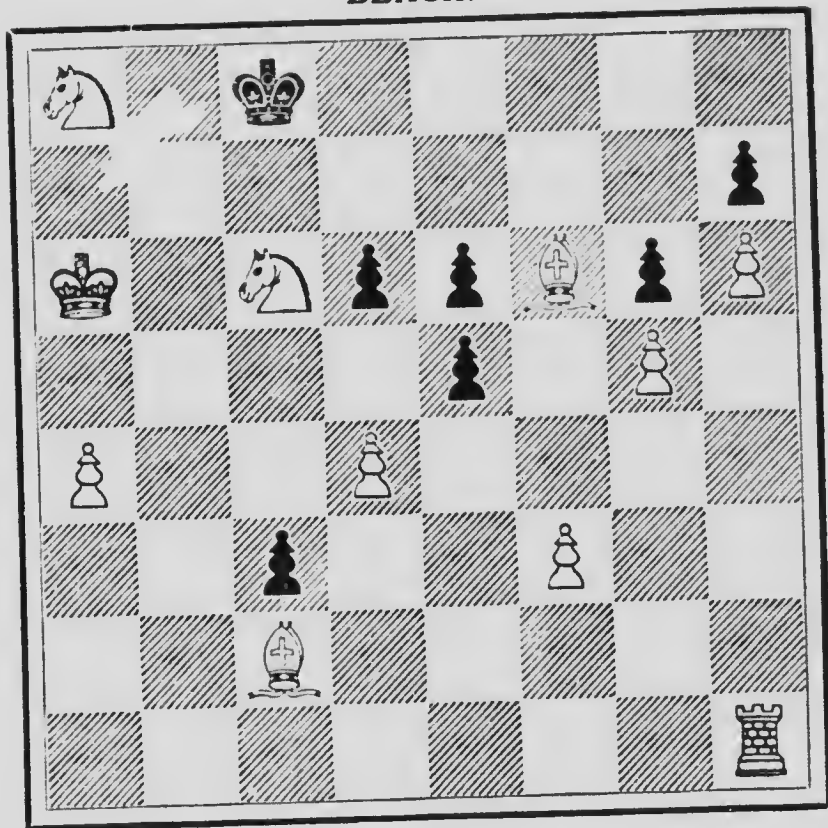


WHITE.

White to play and mate in four moves.

Problem No. 93.

BLACK.

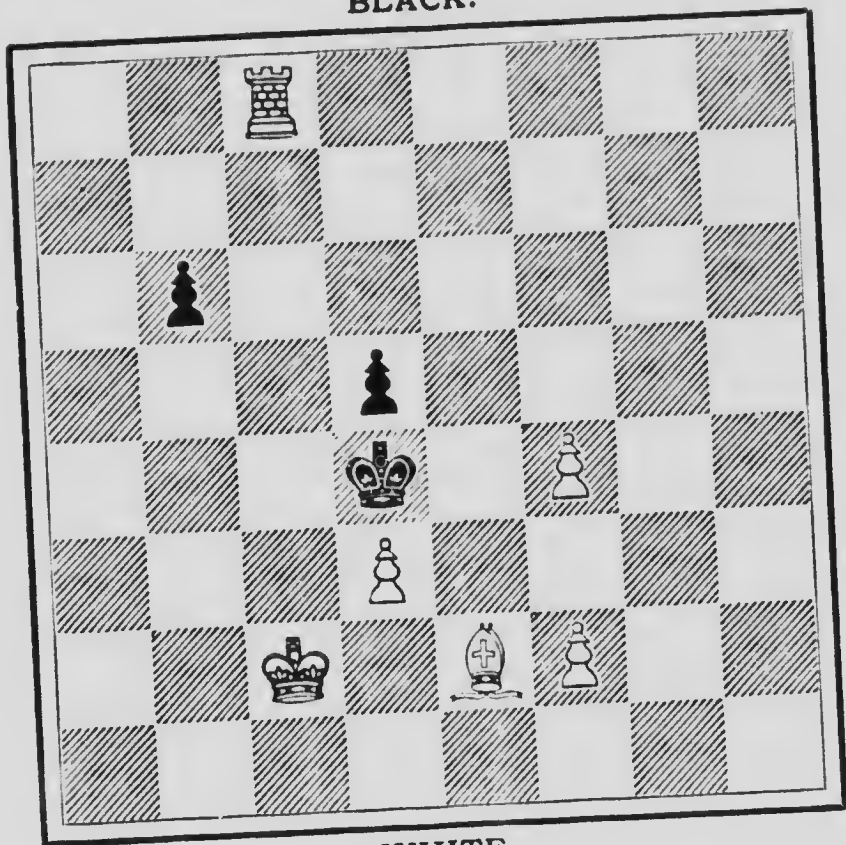


WHITE.

White to play and mate in four moves.

Problem No. 94.

BLACK.

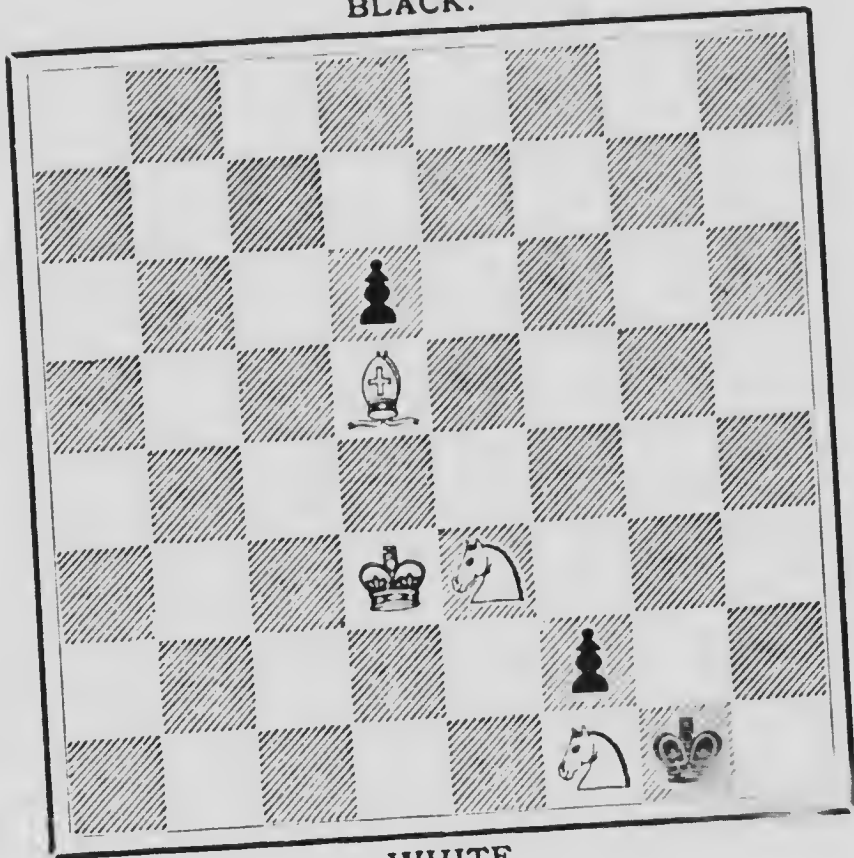


WHITE.

White to play and mate in four moves.

Problem No. 95.

BLACK.

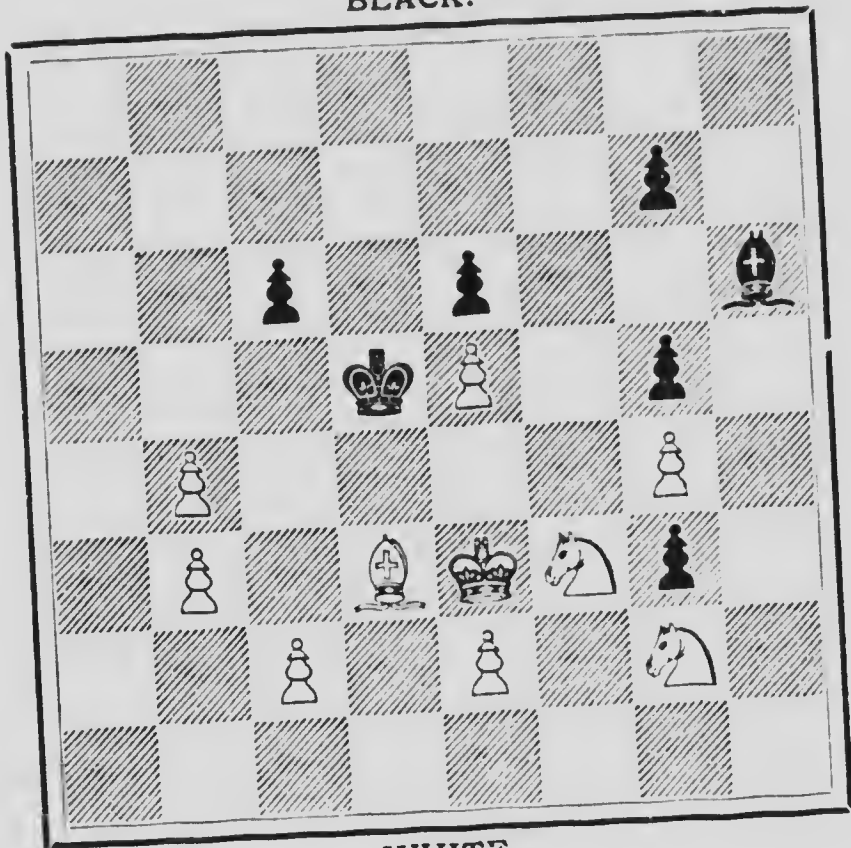


WHITE.

White to play and mate in four moves

Problem No. 96.

BLACK.

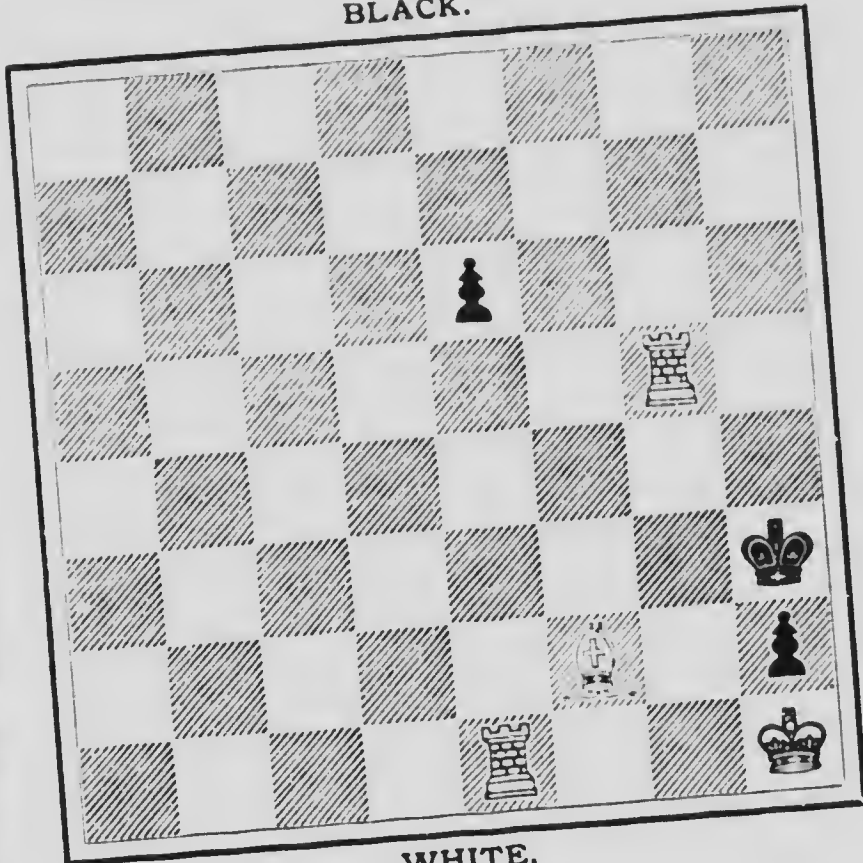


WHITE.

White to play and self-mate in five moves.

Problem No. 97.

BLACK.

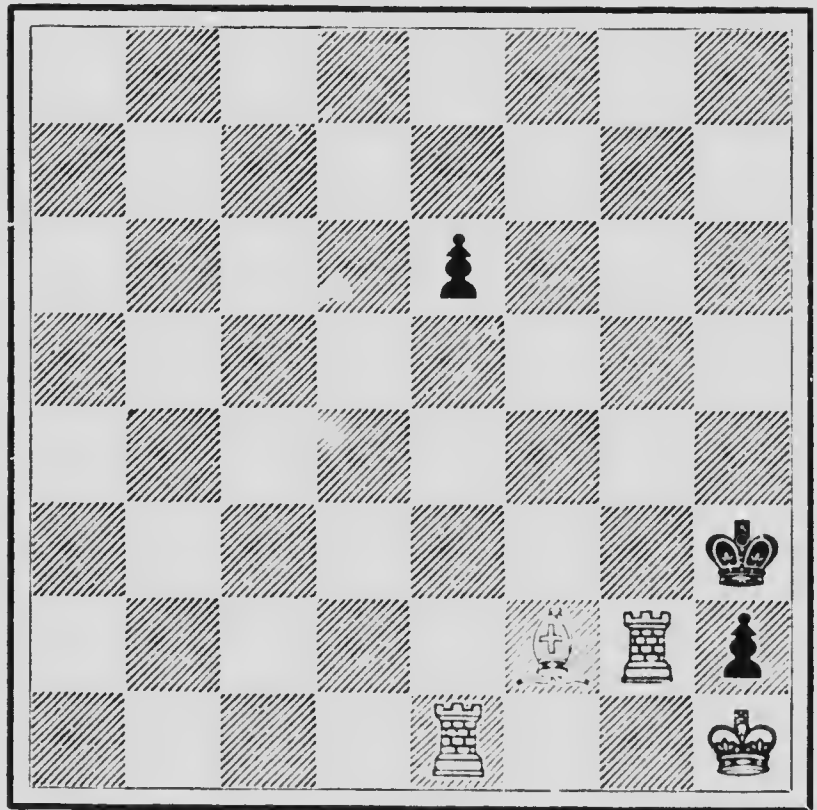


WHITE.

White to play and self-mate in four moves.

Problem No. 98.

BLACK.

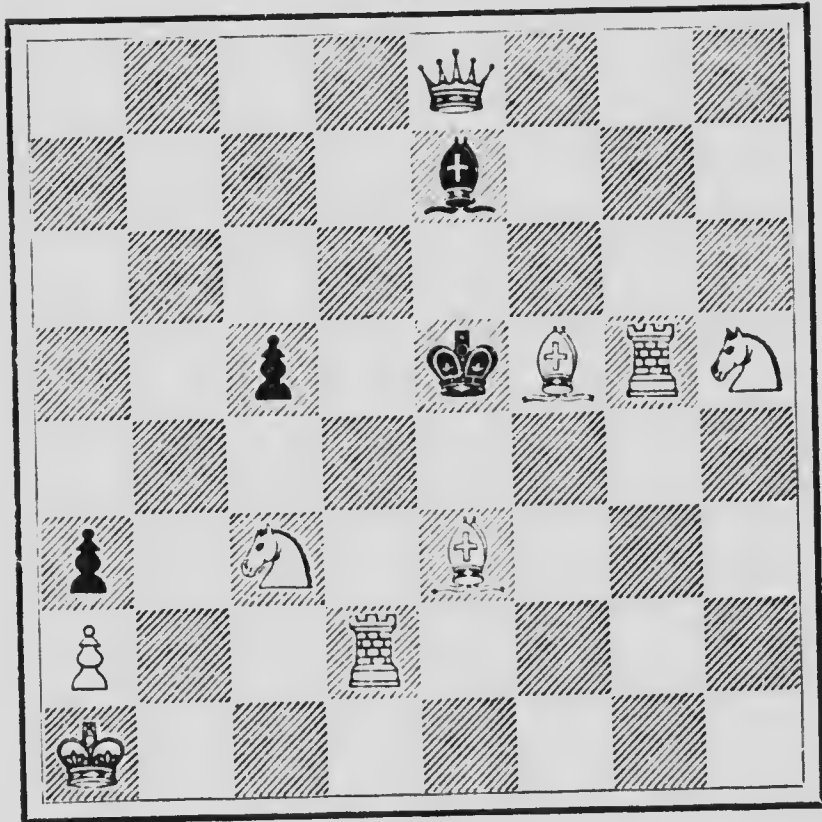


WHITE.

White to play and self-mate in four moves.

Problem No. 99.

BLACK.

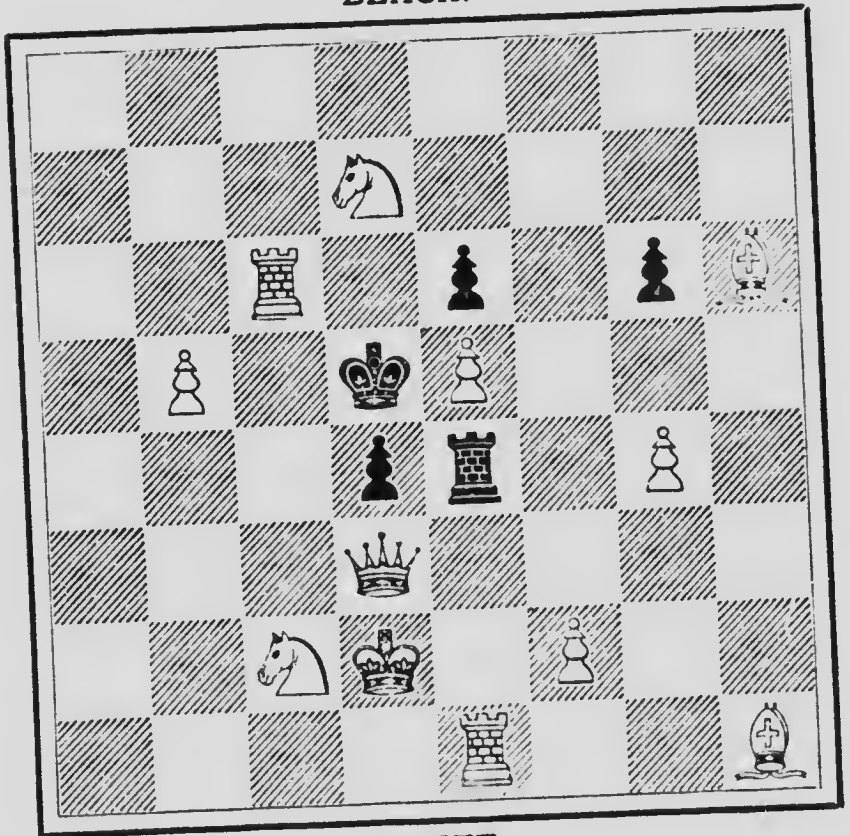


WHITE.

White to play and self-mate in five moves.

Problem No. 100.

BLACK.



WHITE.

White to play and self-mate in five moves.

BIOGRAPHICAL.

Mr. Charles F. Stubbs, the author of the foregoing problems, was born at Taunton, England, of English parents, on April 24, in the year 1853. With the exception of a few years residence in Boston, Mass., where he learned the moves of Chess about thirty years ago, Mr. Stubbs has lived in St. John, N. B., since 1855. He is well-known through his connection with the Globe Chess Column for the past twenty-one years, and has always been an enthusiastic promoter of the game in his own city.

Mr. Stubbs has some reputation as a problem solver; three first prizes, besides minor rewards, having gone to his credit.

Problems Nos. 40 and 82 in the present collection won second prizes in the last tournaments of the Canadian Chess Association, held a few years ago.

Problem No. 1 was composed previous to 1883. It is the author's first problem, and was published in the Detroit Free Press in 1877. All the other problems were composed from 1883 to 1903 inclusive, and are arranged here, in the different sections, two movers, three movers, etc., almost in the precise order of their conception and publication.

Solutions.

Key-moves.

1	I	Q-K8	35	I	B×P	69	I	R-K2
2	I	Kt-K6	36	I	B-KB2	70	I	R-QB3
3	I	R-KB5	37	I	P-KB8 (kt)	71	I	Kt-K8
4	I	K-Kt3	38	I	Kt-KB5	72	I	P-Q8(B)
5	I	Kt-KB8	39	I	Q-QB4	73	I	R-Q5
6	I	P×P <i>e. p.</i>	40	I	B-KR4	74	I	B-QKt2
7	I	R-Q3	41	I	B-QKt2	75	I	P-KKt5
8	I	Q-KB sq	42	I	B-QKt2	76	I	R-Q7
9	I	R-QKt6	43	I	Kt-Q sq	77	I	P-QKt7
10	I	R×P	44	I	Kt-Q sq	78	I	Q-KR sq
11	I	Kt-KB7	45	I	B-QB sq	79	I	B-KR4
12	I	B-KR8	46	I	B-KR7	80	I	B×P+
13	I	Q-KB6	47	I	R-Q5	81	I	B-KKt5
14	I	R-Q5	48	I	Q-Q5	82	I	Q-QR3
15	I	R-QB3	49	I	B-KR3	83	I	Kt×B
16	I	B-K5	50	I	K-QB7	84	I	Kt-Q8
17	I	P-R8(Q)	51	I	Kt-KB2	85	I	Kt-QB6
18	I	Q-KB3	52	I	Kt-KB2	86	I	R-KR sq
19	I	R-Q3	53	I	Kt-QKt6	87	I	B-QKt5
20	I	Kt-K6	54	I	Kt-KKt2	88	I	B-KR sq
21	I	R-KB8	55	I	Kt-KKt2	89	I	R-KR8
22	I	B-KKt sq	56	I	B×P	90	I	B-QR5
23	I	K-Q2	57	I	Kt-KR3	91	I	B-K3
24	I	Q-QR3	58	I	B-Q2	92	I	R-QKt3
25	I	K-Kt8	59	I	R-Q sq	93	I	Kt-QKt8
26	I	B-QKt8	60	I	R-QB6	94	I	K-Kt3
27	I	Kt-Q3	61	I	Q-QKt6	95	I	K-K4
28	I	Kt×P	62	I	Castles	96	I	B-KKt6
29	I	Kt-K sq	63	I	R-KKt6	97	I	R-K4
30	I	R-KKt2	64	I	B-QB4	98	I	R-KB sq
31	I	B-KR sq	65	I	Kt-K2	99	I	R-Q7
32	I	B-QB4	66	I	B-KB sq	100	I	B-KB4
33	I	Kt-K3	67	I	R-K3			
34	I	Q-Q4	68	I	Q-K6			

e
s
q



C



Wise

heads

read

Corsair.



Are
You
On?

Twenty Numbers
One Dollar



E. L. TORSCH, PRES. AND TREAS. C. J. FRANZ, VICE-PRES.

The Torsch & Franz Badge Co.,

DESIGNERS AND MAKERS OF

BADGES, BUTTONS, ETC.,

Chess Buttons for Chess Clubs.

332 North Howard St.,

Baltimore, Md.

TO CHESS CLUBS.

CHESS BOOKS and MAGAZINES

(ANCIENT AND MODERN), Also

Books on Draughts, Whist, etc.,

Supplied by . . .

FRANK HOLLINGS,

Works rare
and out-of-print
sought for.

7 Great Turnstile,
HOLBORN, England.

Catalogue sent on application.



CORSAIR

A Chess Weekly
20 Numbers, \$1

Published by the
NEW ENGLAND
CHESS COMPANY
28 Winslow Street
Boston, Mass. . . .

CORSAIR

C. F. STUBBS,

204 St. James street, St. John, N. B., Canada.

Mail order business for Chess Supplies and Books.

CHESS SUPPLIES.

Crane's Pocket Chess Board. The best thing for correspondence play, composing or solving problems, retaining positions, or playing on the railway cars. The board can be closed and carried indefinitely without disturbing the position. Price, \$1.00. Extra men, 10 c. a set.

Stubbs's Superior Chess Printer. One set best Rubber Chess Type on handy stained wood bases, two ink pads, in a neat wood case with heavy pasteboard cover. Always ready for use. Price, \$1.00.

Chess Diagrams, $2\frac{1}{4}$ inch field. One hundred, 25 c.; five hundred for \$1.00. Electros for printing diagrams on a printing press, \$1.00 each.

Game Sheets. Four-page game recorders, good quality of paper; 100 for 60 c.

Any of the foregoing well known and reliable Chess requisites sent to your address on receipt of price—no charge for postage.

CURRENT CHESS BOOKS

Classified Chess Games, Blanshard, 3 vols., each..	.35
How to play Chess, Rev. E. E. Cunningham.....	.35
Chess Lessons for Beginners, Cunningham.....	.35
Chess Openings for Beginners, Cunningham.....	.35
Selected Chess Endings, Cunningham.....	.35
Chess Traps and Stratagems, Cunningham.....	.35
Half-hours with Morphy, Cunningham.....	.35
Chess Endings for Beginners, J. H. Blake.....	.35
Chess Endings from Modern Master Play, Moses	.35
Chess, L. Hoffer (246 pages).....	.35
Chess, by R. F. Green.....	.35
Chess Openings, by I. Gmsberg.....	.35
Two Move Chess Problem, by B. G. Laws.....	.35
The Games of Greco, Prof. Hoffman.....	.50
Select Endgames, by E. Freeborough.....	.50
Modern Chess Primer, Cunningham.....	.60
Chess Openings, Mason.....	.75
Social Chess, Mason.....	.85
Problem Art, Rowland.....	.85
Canadian Chess Problems.....	1.00
Minor Tactics of Chess, by F. K. Young.....	1.00
Principles of Chess, by James Mason.....	1.25
Marshall's Chess Openings.....	1.25
Chess Player's Compendium, Cook (paper).....	1.25
Chess Play Handbook, by Staunton.....	1.35
Chess Play Companion, by Staunton.....	1.35
Chess Praxis, by Staunton.....	1.35
Chess Congress of 1862.....	1.35
Chess Tournament of 1851.....	1.35
Morphy's Games, Lowenthal.....	.35
Chess Openings, by E. Freeborough.....	1.50
Hastings Chess Congress.....	1.75
Art of Chess, by James Mason.....	1.75
Chess Endings, by E. Freeborough.....	2.00
Chess Studies (Walker's 1000 Games).....	2.00
Chess Endgames, by Horwitz and Kling.....	2.00
Chess Problem Text Book.....	2.00
Major Tactics of Chess, by F. K. Young.....	2.25
Chess Strategetics, by F. K. Young.....	2.25
Chess Bouquet, Gittins.....	2.50
Grand Tactics of Chess, by F. K. Young.....	3.00
Chess Digest, by Mordecai Morgan, 3 vol., each	3.50
Chess Digest, by Mordecai Morgan, vol. iv.....	5.00

All books postpaid at above prices

C. F. STUBBS,

204 St. James street, St. John, N. B., Canada.

**THE NEW ENGLAND
CHESS COMPANY**

**PUBLISHERS, BOOKSELLERS, AND
DEALERS IN CHESS SUPPLIES**

**28 WINSLOW STREET
BOSTON, MASSACHUSETTS**

**CORSAIR
A CHESS WEEKLY
TWENTY NUMBERS, ONE DOLLAR**
...

BOOKS
**NEW AND SECOND HAND
THE LATEST ON THE MARKET AT
PUBLISHERS' PRICES. OUT-OF-
PRINT WORKS AND RARE VOLUMES**
...

MAGAZINES
**ODD NUMBERS SUPPLIED, AND
FILES COMPLETED. SUBSCRIPTION
RECEIVED FOR ANY MAGAZINE**
...

SUPPLIES
**DIAGRAMS AND GAME RECORDS
IN SINGLE SHEETS, FOLDERS, AND
BOOKS. CHESSMEN AND BOARDS
POCKET CHESS BOARDS, CLOCKS
AND RUBBER STAMP OUTFITS**
...

INSTALMENTS
**A DEPARTMENT TO SUPPLY THE
NEEDS OF RESPONSIBLE CHESS
PLAYERS. MONTHLY PAYMENTS
COMMUNICATIONS CONFIDENTIAL**
...

**GEORGE H. WALCOTT
MANAGER**



WILL H. LYONS,
Newport, Kentucky, U. S. A.,

Carries the largest stock of
Chess Books, Chess Maga-
zines, Checker Books, Check-
er Magazines, Chessmen, and
Chess Supplies generally,
of any dealer in the world.

**Over 9000 volumes
constantly on hand.**

Has everything obtainable,
old or new.

Catalogues Free.

3733-022-1000

OF INTEREST TO CHESS PLAYERS
CHESS NOVELTIES

and

Their Latest Developments

With Comparisons of the Progress of Chess Openings
of the Past Century and the Present, Not
Dealt With in Existing Works.

By H. E. Bird.

12mo., cloth; Price, \$1.50

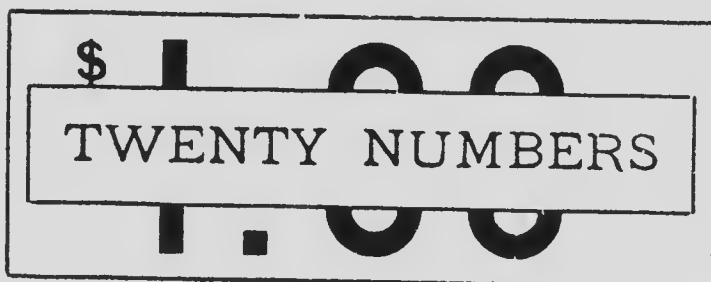
"It will be found to abound in chess incident of the
most fascinating kind, and full of suggestions to the
thoughtful player."—Professor Hoffman.

If you are interested in the game of Checkers
send for our list of works.

. Of all booksellers, or post-paid on receipt of price by
the publishers,

F. Warne & Co., 36 E. 22nd St., N. Y.

In hoc signo spes mea.



CORSAIR

